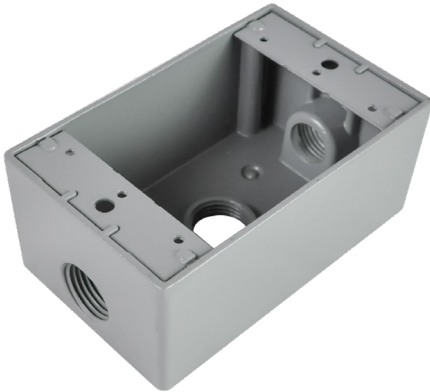






D5613 / D5633

RECTANGULAR BOX



INCLUDES:

-  x 2 threaded plugs
-  x 2 galvanized steel mounting tabs
-  x 1 ground screw
-  x 2 screws



CONSTRUCTION

- 1 Gang die cast aluminum box with three 1/2" or 3/4" threaded entries.
- Durable silver grey powder coat paint finish.

FEATURES

- Stamped galvanized steel tabs for ease of mounting.

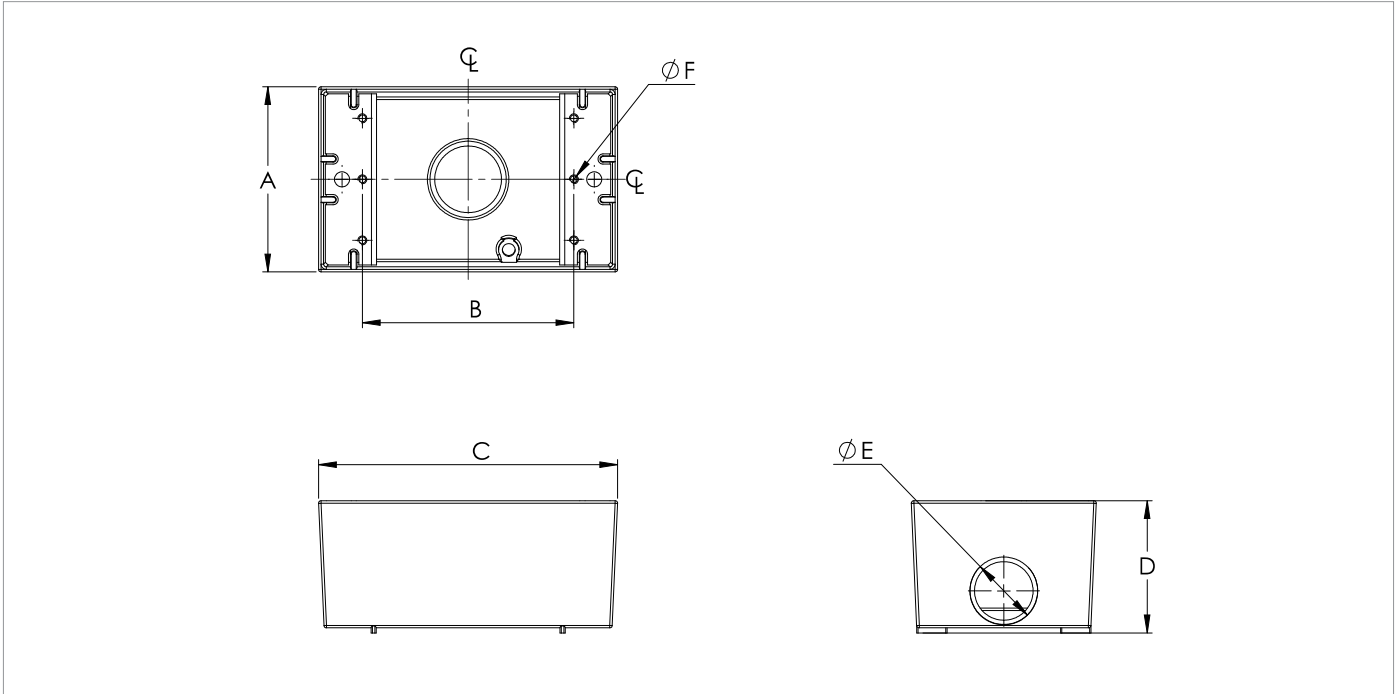
APPLICATION:

-  Ideal for industrial or commercial use
-  Weather resistant

CERTIFICATION:



DIMENSIONS



PRODUCT	A	B	C	D	E CONDUIT ENTRY	F SCREW HOLES
D5613	2.83	3.28	4.60	2.09	3x1/2 NPT	6x6-32
D5633	2.83	3.28	4.60	2.09	3x3/4 NPT	6x6-32

ORDER INFO

STOCK CODE / DESCRIPTION
095778 D5613 - GREY BOX - 3 X 1/2" ENTRIES - 1 GANG
095781 D5633 - GREY BOX - 3 X 3/4" ENTRIES - 1 GANG