



# WL-LED26 Outdoor Wall Light

Save installation time with your new Go-To Wall Light!

Ideal for: Townhouses, Strip Malls, Entrances/Exits, Building Perimeters, Man Doors and Loading Areas

 Replaces 70W HPS units

 Colour Selectable (3K/4K/5K)

\*Default factory setting is at 4000K



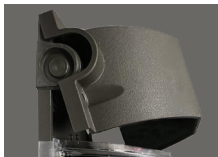
### ROBUST CONSTRUCTION

Die cast aluminum back plate with polycarbonate front.



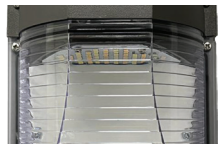
### INTEGRATED PHOTOCELL

For dusk to dawn operation. Can be disconnected during installation if needed.



### CONDUIT ENTRIES

Two 1/2" knockouts for conduit entries (1 on each side) and 1" knockout on the back.



### PC LENS

Clear, ribbed polycarbonate lens for bright and widespread illumination.

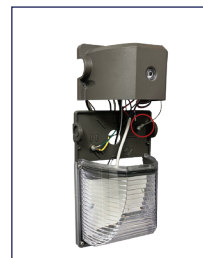


### CCT SELECT UNIT

Choose between 3000K/ 4000K/ 5000K using a switch that is located behind a rubber plug on the back plate.

### EASY TO INSTALL

The front box can be hung on the back plate with an attached aircraft cable allowing Installer to use both hands for wiring.



Scan the QR CODE to view this product on our website

