



ELECTRICAL SHOCK HAZARD

READ, UNDERSTAND, and FOLLOW these instructions before installing the equipment.

WARNING

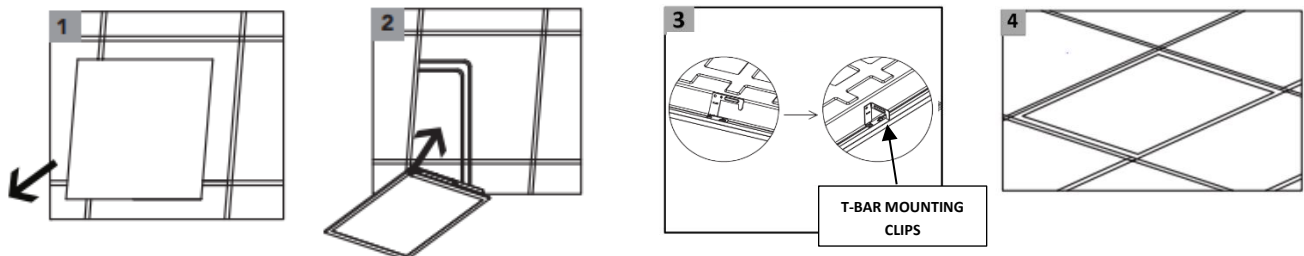
Disconnect the Electrical supply power at the service panel (fuse or circuit breaker box). Failure to do so could result in serious injury or death. Only qualified electricians should install this fixture and the installation **MUST** conform to the Canadian Electrical Code Part I and all local codes and ordinances. Ensure that only proper tools, materials, and equipment are used to complete the installation.

SAFETY

1. Proper grounding is required to ensure personal safety.
2. Fixture should be mounted in locations where unauthorized personnel will not readily subject it to tampering.
3. Do not use this equipment for anything other than its intended purpose.
4. Servicing this equipment should be performed by qualified service personnel.
5. Save these instructions.

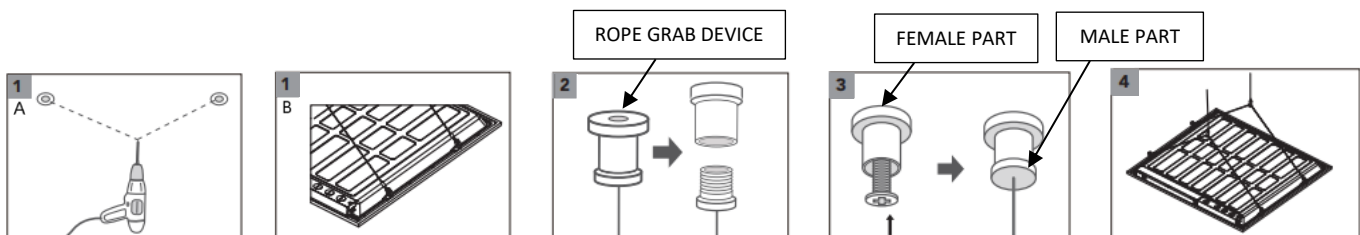
INSTALLATION FLUSH CEILING MOUNT

1. Remove the grid tile from the ceiling.
2. Lift the fixture to the ceiling and make appropriate wiring connections as per the wiring diagram.
(Optional): Adjust the Wattage/Lumen and CCT select switches as desired.
3. Attach the T-Bar mounting clips by bending them over the grid rails.
4. Slide the fixture into the ceiling grid.



INSTALLATION 2 CABLE SUSPENSION MOUNT (optional purchase of accessories)

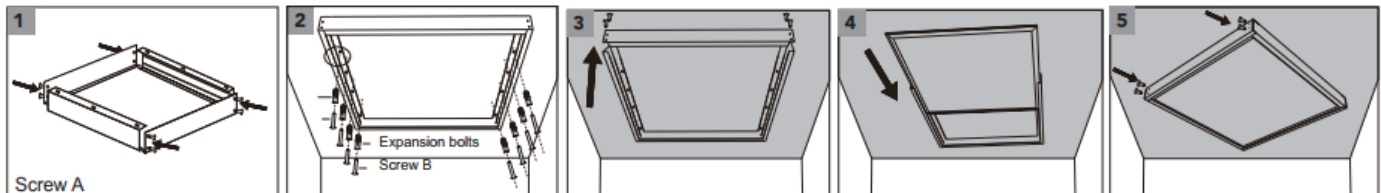
1. Drill 2 mounting holes to the ceiling, with the holes being spaced according to the size of the panel light.
2. Use appropriate screw securing method (for given ceiling material) to secure the female part of the rope grab device to the ceiling by drilling the self tapping screw into mounting holes.
3. Ensure wire is secured with male part of the rope grab device. Screw the male part of the rope grab device into the female part.
4. Connect wire hooks to the panel light by placing them through the small holes in the T-Bar mounting clips.



INSTALLATION INSTRUCTIONS

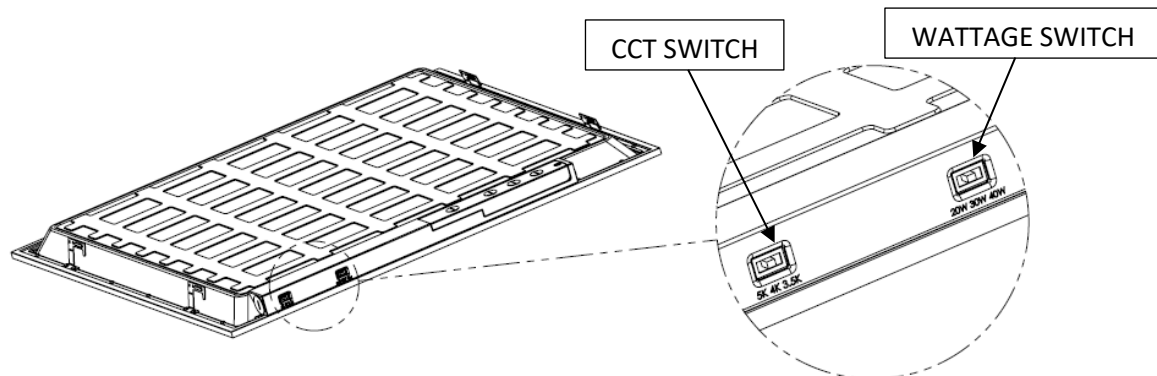
INSTALLATION SURFACE MOUNT (optional purchase of accessories)

1. Assemble the four frames with (Screw A) to create square the size of the panel light.
2. Fix the square made of four frames to the ceiling with (Screw B).
3. Remove one side of the frame to make room for panel light.
4. Slide the panel into the square frame.
5. Put the previously removed piece of frame back in place using the smaller screw.



CCT & WATTAGE SELECTABLE SWITCHES

1. CCT selectable switch can be accessed from backside of the fixture. It has multiple CCT settings. (e.g. 3500K, 4000K and 5000K. Default: 4000K)
2. Wattage selectable switch (adjacent to CCT selectable switch) can also be accessed from backside of the fixture. It has multiple settings for Lumen Intensity. (Default: Max. Watts)



WIRING

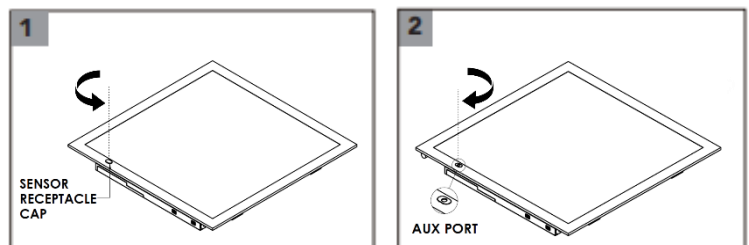
1. Check that the line voltage is correct.
2. Connect fixture **GROUND** (green) wire to power supply **GROUND** (green) wire.
3. Connect fixture **WHITE** wire to power supply **NEUTRAL** wire.
4. Connect fixture **BLACK** wire to power supply **LINE** wire
5. The fixture includes 0-10V dimming functionality, connect **PINK/GREY** and **VIOLET** wires to the dimming controller.

SUPPLY	HOT	BLACK	LIGHT FIXTURE
	NEUTRAL	WHITE	
	GROUND	GREEN	
0-10V DIM	DIM-	PINK/GREY	
	DIM+	VIOLET	

SENSOR INSTALLATION

1. Twist the the sensor receptacle cap and remove it.
2. Install the sensor using AUX port and twist the sensor to lock it.

Note: Recommend installing the sensor before mounting the panel in the T-grid. If panel is already mounted, then lift the panel slightly upwards from the T-grid and twist the sensor to lock it.



SENSOR PROGRAMMING (RC-500 REMOTE CONTROL)

USER GUIDE						
ON	Turns fixture ON					
OFF	Turns fixture OFF					
TEST	Test mode follows the following sequence. Hold time 2 seconds, Stand-by dim level 50%, stand-by time 2 seconds. Test mode will return to previous setting after 5 mins.					
RESET	Reset to Default Settings – Marked with * below.					
DIM+/-	Increments or decrements brightness by 0.5V (5%).					
TRIM-LEVEL	Maximum brightness 50%/75%/100%*					
SENSITIVITY	Sensitivity of surrounding motion OFF/LOW/HIGH* OFF indicates sensor mode is disabled and it will act as photocell only.					
HOLD TIME	After no motion for [HOLD TIME], the fixture dims from [TRIM-LEVEL] to [STANDBY DIM]. 30sec/5min*/15min/30min					
STANDBY DIM	Fixture dims to this level after [HOLD TIME] has passed. 0%/10%/30%*/50%					
STANDBY TIME	After no motion for [STANDBY TIME] after [HOLD TIME] has passed, the fixture turns off. 10sec/5min/15min/30min/60min*/∞ Select ∞ if the fixture should not turn off and should stay at [STANDBY DIM] level.					
PHOTOCELL	LOW/HIGH/CAL/OFF* At LOW, the fixture will turn on below 1 fc and off above it. At HIGH, the fixture will turn on below 50 fc and off above it. At CAL, the current lux level will be used to auto determine lux level. At OFF, the photocell is disabled.					
SEND	Once the desired settings are selected, press SEND to send settings to the sensor. A double flash indicates that the new setting is applied/saved.					
MODES	TRIM-LEVEL	SENSITIVITY	HOLD TIME	STANDBY DIM	STANDBY TIME	PHOTOCELL
MODE A	100%	LOW	30min	50%	∞	CAL
MODE B	100%	LOW	30min	50%	15min	CAL
MODE C	100%	LOW	30min	50%	15min	OFF
MODE D	50%	LOW	30sec	50%	30min	CAL
MODE E	Manual mode; TRIM-LEVEL: 100%					
MODE F	Daylight harvesting, TRIM-LEVEL: 50%, Sensitivity: LOW, HOLD TIME: 15min					

Select the desired settings (TRIM-LEVEL, SENSITIVITY, HOLD TIME, STANDBY DIM, STANDBY TIME & PHOTOCELL) or a pre-set Mode and press SEND.

