



## Introducing the new CYLUX family.

Exceptional quality & design at an  
equally exceptional price!



# Unleash your Creativity in Every Beam: Dual Glow, One Design, Three Options.

Traditional Architectural Cylinders with Stylish & Flexible Design, Great for Indoor & Outdoor.

# Unmatched flexibility with loads of standard features and customizable options.



CCT Selectable



Wide Voltage



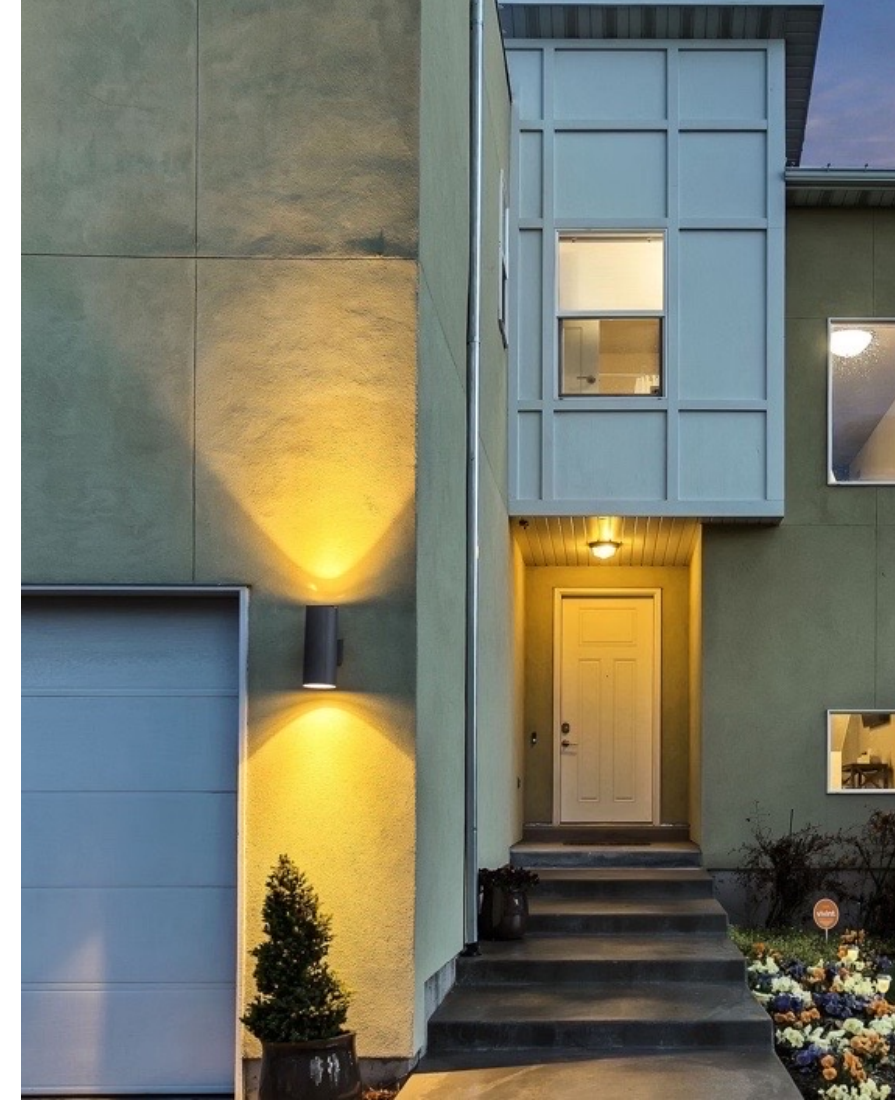
Changeable Beam



Photocell Included

- **3 different sizes** - 3", 4", 6".
- **Up and downlight selection** – Select between indirect and direct light.
- **Field change-able optics** – Standard 30°, Additional optics in the box - 45°.
- **Standard photocell** – Turn ON/OFF the photocell based on needs.
- **CCT selectable** - 3000K/4000K/5000K.
- **Wide voltage (Universal)** - 120-347V.
- **Contractor friendly installation** – Quick and hassle-free.

\* Damp Location for Ceiling Mount.





Select the best option for your specific needs from our complete family.



CYLUX 3"  
WM



CYLUX 4"  
WM



CYLUX 6"  
WM



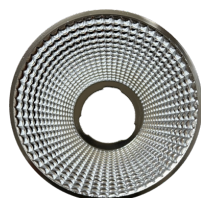
CYLUX 3"  
CM



CYLUX 4"  
CM



CYLUX 6"  
CM



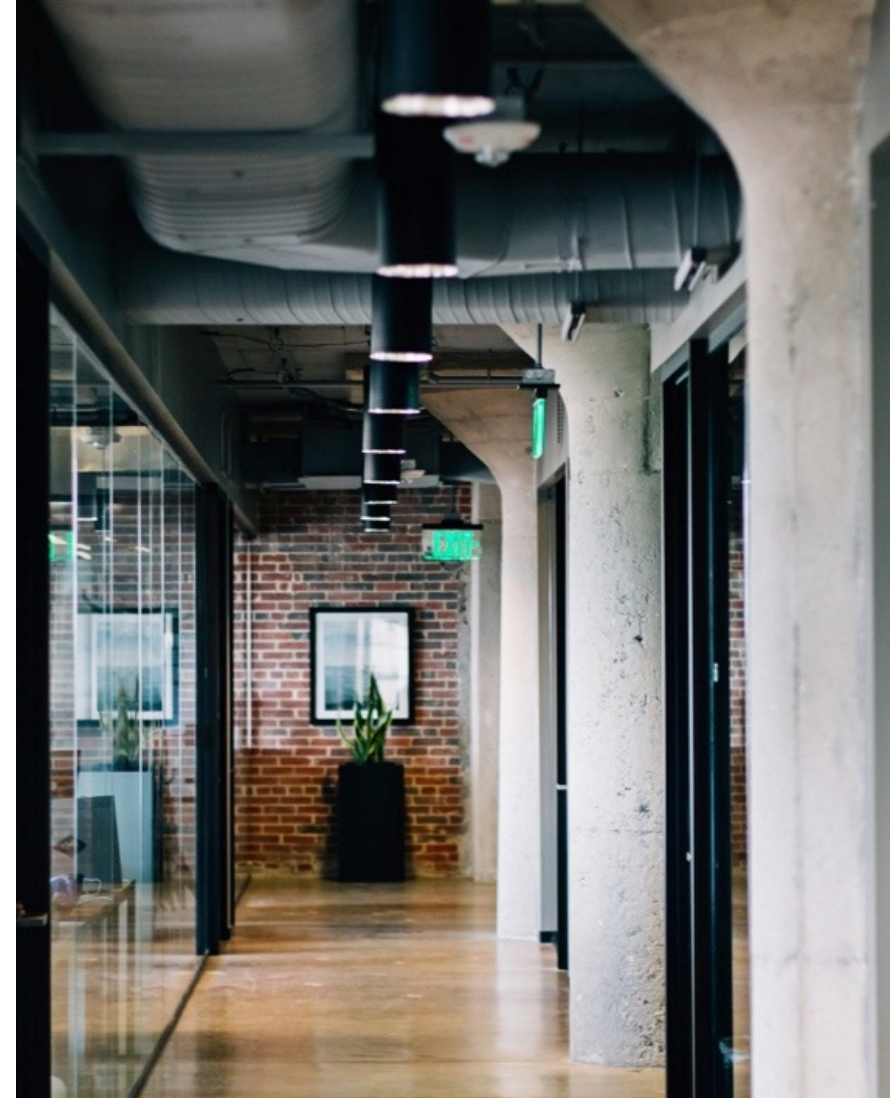
**Beam Reflector**

30° Standard  
45° Included in the Box  
75° Factory Installed



**Pendant Stem**

Sold Separately

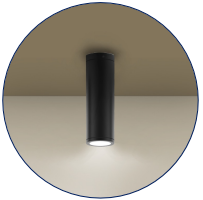




# Three different mounting solutions offers maximum versatility.



**Wall Mount** (Up and Down) - Standard



**Ceiling Surface Mount** - Standard

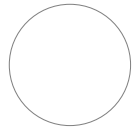


**Ceiling Pendant or Cable Mount** - On-site conversion



# Standard in black and white. Customizable to any colour.

## Standard



WHT  
White



BLK  
Black

## Custom



BRZ  
Bronze



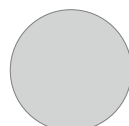
DGN  
Green



MBK  
Mirror Black



HGY  
Hammerstone



SPS  
Sparkle Silver



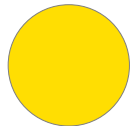
GGN  
Garden Green



DGY  
Dove Gray



RED  
Red



YLW  
Yellow



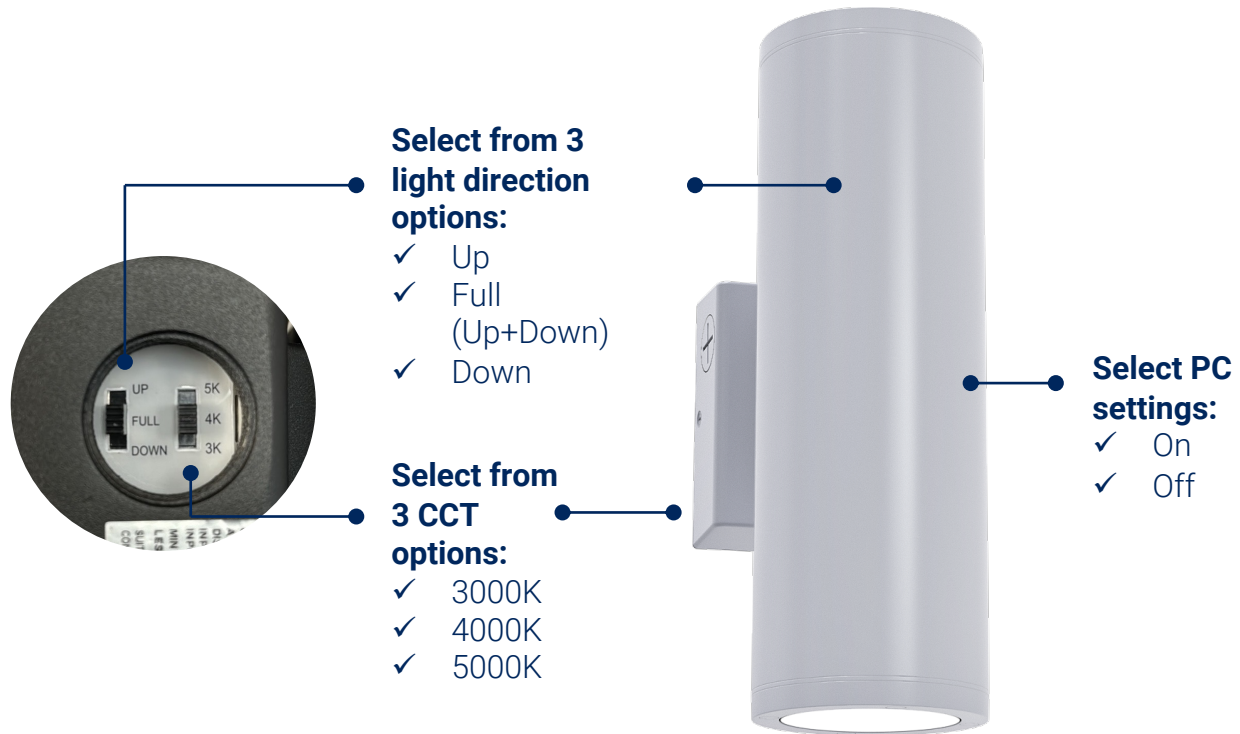
BLU  
Blue



Custom  
Colour



# Field selectability enables easy selection of features.





# Contractors can choose the right optics for the job quickly and easily for both up and down light.

Change from 30° standard beam to 45° beam (provided in the box) or 75° beam (ordered separately).



30° beam



45° beam



75° beam

# Many Applications

**CYLUX** is a great option for both indoor and outdoor industrial and commercial applications. This family of fixtures is a perfect fit in many applications from:



# Specifications

	CYLUX3	CYLUX4	CYLUX6
WATTS	13W	20W	35W
LUMENS (Max)	1070 LM	1840 LM	5000 LM
EFFICACY (LM/W)	90 LM/W	100 LM/W	143 LM/W
VOLTAGE	120V-347V		
CCT	VK - Color Selectable (3000K/4000K/5000K)		
CONSTRUCTION	Extruded Aluminum		
OPERATING TEMP	-40°C to 40°C		
MOUNTING	Wall Mount / Ceiling Mount / Pendant Mount		





# Ordering Guide

		H	VK			DIM		
FIXTURE	WATTAGE	VOLTAGE	COLOR TEMP.	BEAM DISTRIBUTION	FINISH	DIMMING	CONTROLS	MOUNTING
CYLUX3	LED13	H-120-347V	VK - Color Selectable (3000K/4000K/5000K)	CD - Field Changeable Distribution (N-30°, M-45°)	BLK – Black	DIM - 0-10V Dimming	PC - Photocell	WM – Wall Mount
CYLUX4	LED20				WHT - White		Blank	*CM – Ceiling Mount
CYLUX6	LED35			W – Wide (75°)	CST – Custom Color			

\*Ceiling mount can be used as Suspension Mount, order pendant stem separately for pendant mounting  
Default Setting: Highest Wattage, 4000K and 100% downlight



Pendant Stem  
Sold Separately

# RAB's cylinder family offers many choices.



# Ready to order?

We'd be happy to help.

For more information, a quote, a lighting design layout, or questions, get in touch!

Follow up:

Miguel Couto

[salesupport@rabdesign.ca](mailto:salesupport@rabdesign.ca)

[layouts@rabdesign.ca](mailto:layouts@rabdesign.ca)

416.252.9454