



RDL4-LED

4" Round Downlight



Fixture with driver box



IDEAL APPLICATIONS:

- ✓ **Hallways**
- ✓ **Offices**
- ✓ **Living Rooms**
- ✓ **Kitchens**
- ✓ **Retail Stores**
- ✓ **Residential Settings**

DESCRIPTION:

4" down light edge-lit with dimmable driver ideal for new construction and remodeling projects in residential and commercial applications. 5 position switch on driver box for adjusting colour temperature. Approved for use in Insulated Contact Ceiling.

FEATURES:

- Die cast aluminum outer frame with powder coated white paint finish and polystyrene frosted lens.
- Slim Profile – fixture is less than 0.5 inches and junction box is less than 1.4 inches.
- Colour Selectable Unit – choose between 2700K/3000K/3500K/4000K/5000K using a switch on the junction box.
- IC (Insulation Contact) Rated Recessed Downlight with driver junction box. IC Rated implies that the unit is approved for direct contact with insulation.
- Fixture has high performance edge-lit LEDs with a CRI greater than 80, delivering an even spread of light.
- 26.5" cable length and external mounting tabs on the junction box for easy installation. Template for ceiling hole included in box.
- Fixture is dimmable using a TRIAC dimmer.

SPECIFICATIONS:

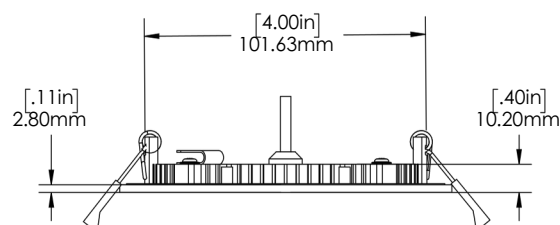
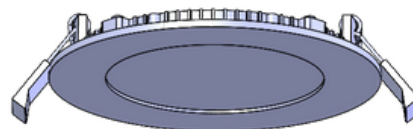
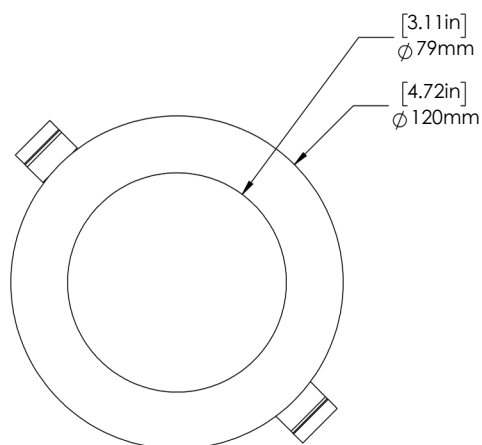
Size (in)	4"
Input Power	10.2 W
Lumens	645.3 lm
Efficacy	63.3 lm/W
Voltage	120V
CCT (K)	Variable Kelvin (2700K/3000K/3500K/4000K/5000K)
CRI	81.4
Dimming	TRIAC (10%-100%)
Power Factor	0.97
LED Life (L81)	100,000 hours
Housing Finish	White
Housing Details	Die Cast Aluminum
Lens Details	Frosted Lens
Conduit Entries (Junction Box)	Two 1/2" knockouts
Cable Length	26.5"
Operating Temp.	-20°C to +40°C (-4°F to +104°F)
Certifications	ETL, IC Rated, Energy Star, Wet Location, 5 Year Warranty

Values shown are for 4000K setting.

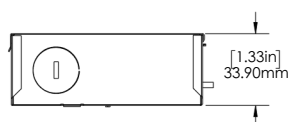
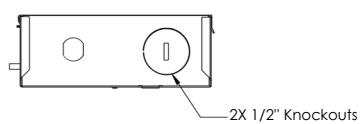
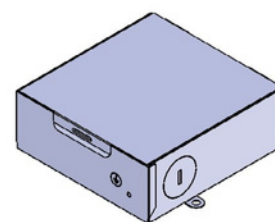
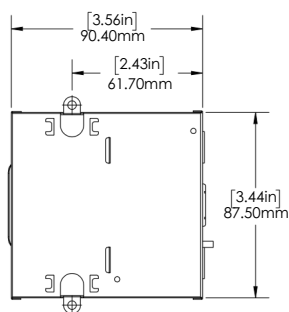
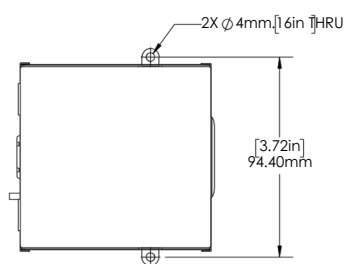


DIMENSIONS:

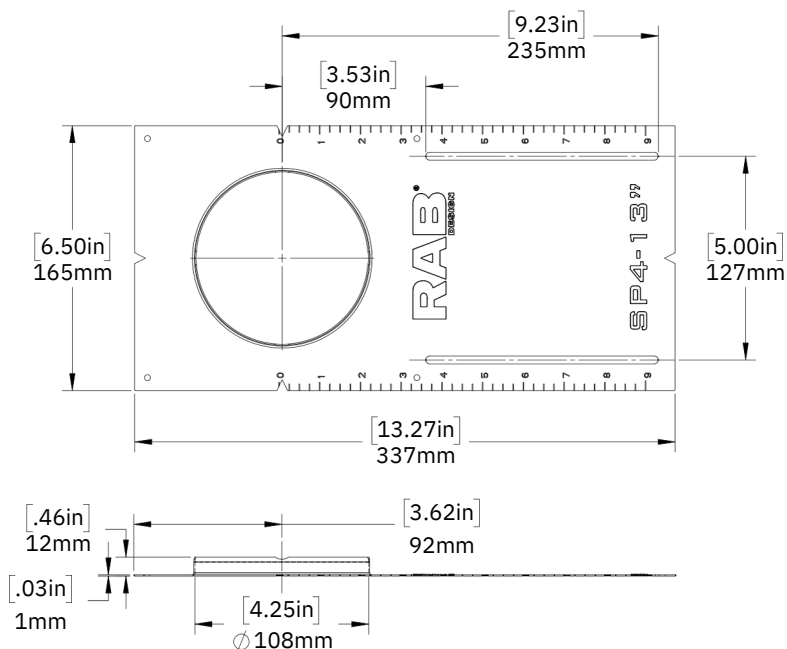
RDL4 FIXTURE HEAD



JUNCTION BOX



SP4 CONSTRUCTION PLATE



COLOUR SELECTABLE SWITCH:

The switch is located on the side of the driver box

Easily change the colour temperature with a flip of a switch.

Left to Right: 2700K/
3000K/ 3500K/ 4000K/
5000K



AMPERAGE DRAW

CURRENT (A)

120V

0.1A

RDL4-LED

TM-21 ESTIMATED LUMEN MAINTENANCE

50,000 Hours

75,000 Hours

100,000 Hours

RDL4-LED

90.3%

85.7%

81.4%

Life hours are derived from IESNA LM-80 testing report and projected per IESNA TM-21 calculations.

ORDERING GUIDE

RDL4	LED10	A	VK	WHT	TRIAC	
------	-------	---	----	-----	-------	--

Fixture	Wattage	Voltage	Colour Temp.	Finish	Dimming	Packaging
	LED10	A - 120V	VK - Colour Selectable (2.7K/3K/3.5K/4K/5K)	WHT - White	TRIAC - TRIAC Dimming	BLANK - Individual packaging 1/12 - 12 PCS Bulk Packaging

STOCK CODES

081567	RDL4-LED10-A-VK-WHT-TRIAC
083755	RDL4-LED10-A-VK-WHT-TRIAC-1/12

ACCESSORIES SOLD SEPERATELY



083756 - SP4-ROUGH IN PLATE 4"

RECOMMENDED DIMMER LIST

Brand Name	Model Number
LUTRON	DVELV-300P
	DVELV-303P
	MAELV-600
	CTELV-303P
LEGRAND	RH703PTUW (Only in reverse phase mode)
LEVITON	66EV-10W
	DSE06-10Z