



RDL4G-LED

GIMBAL DOWNLIGHT



The RDL4G gimbal downlight is designed for versatility, featuring a 360° swivel and up to 90° tilt to effectively highlight specific areas. It includes a 5 CCT select switch, allowing users to customize the color temperature to suit different environments. With a simple installation process and a 5-year warranty, this fixture is perfect for both new construction and remodeling projects in commercial and residential settings, ensuring flexibility and high performance.

IDEAL APPLICATIONS

- ✓

Office space
- ✓

Retail stores
- ✓

Hallways
- ✓

Residential applications

SPECIFICATIONS:

PERFORMANCE		CONSTRUCTION	
Light Output	850lm	Housing	Die-Cast Aluminum
Efficacy	70 lm/W	Lens	Acrylic
CCT	CCT Selectable- 2700K/3000K/3500K/4000K/5000K	Adjustable Head	360° Rotation & 0-90° Tilt
Beam Distribution	40° Beam Angle	Weight	Fixture: 0.4 lbs
LED Lifetime (L70)	>100,000 Hrs		Junction Box: 0.4 lbs
CRI	80	AMBIENT OPERATING TEMPERATURE	
ELECTRICAL		-30°C to 50°C (-22°F to 122°F)	
Wattage	12W	MOUNTING	
Voltage	120V	Recessed Mount	
Surge Protection	2.5kV	CERTIFICATIONS	
Power Factor	>0.9	ETL Listed for Canada & USA, per UL 1598 & CSA C22.2#250.0 Ed.5	
THD	<15%	IC (Insulation Contact) Rated	
Cord	15" Power Cord, AWM 300V 24AWG (Between fixture and junction box)	CONTROLS	
Conduit Entries	3x 1/2" Conduit Entries	TRIAC/ELV Dimming (10-100%, Dim to Off)	
		MAX AMPERAGE DRAW	
		120V	0.110A

Life hours are derived from IESNA LM-80 testing report and projected per IESNA TM-21 calculations.

ORDERING GUIDE:

RDL4G	LED12	A	VK	WHT	TRIAC
Fixture	Wattage	Voltage	Colour Temp.	Finish	Dimming
RDL4G	LED12	A - 120V	VK - Colour Selectable 2700K/3000K/3500K/ 4000K/5000K	WHT - WHITE	TRIAC - TRIAC/ELV Dimming

**Note:** Default CCT is 2700K.

STOCK CODE	
083749	RDL4G-LED12-A-VK-WHT-TRIAC



**INCLUDED IN THE BOX**

 JUNCTION BOX WITH PRE-  
 INSTALLED CORD

**ACCESSORIES SOLD SEPARATELY**


083756 - SP4-ROUGH IN PLATE 4"

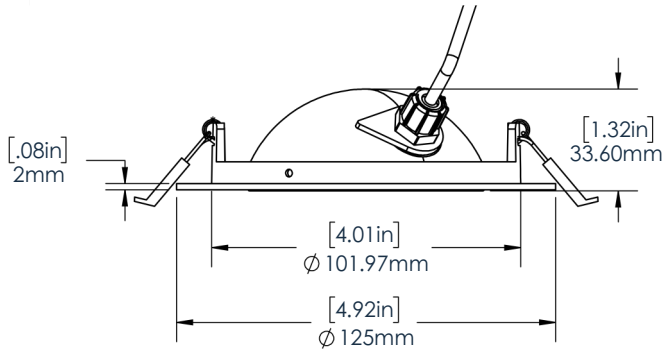
**COMPATIBLE DIMMERS**

Brand	Model	Dimming Protocol
LUTRON	MAELV-600	ELV
	CTELV-303P	ELV
	DVELV-300P	ELV
	DVELV-303P	ELV
	DVSCELV-300P-SW	ELV
	DVSCELV-303P-SW	ELV
	MSCELV-600M-SW	ELV
	MACL-153M-SW-C	TRIAC
	AYCL-153P	TRIAC
	CTCL-153 PDH	TRIAC
	DVRF-5NE (Caseta Diva Smart Dimmer)	ELV
	PD-5NE (Caseta Original Smart Dimmer)	ELV
	PD-6WCL (Caseta Original Smart dimmer)	TRIAC
LEVITON	66EV-10W	ELV
	DSE06-10Z	ELV
	6674-P0W	TRIAC
	DSL06-1LM	TRIAC
EATON	TUL06P-C2	TRIAC
LEGRAND	RH703PTUW (Reverse mode is recommended)	ELV

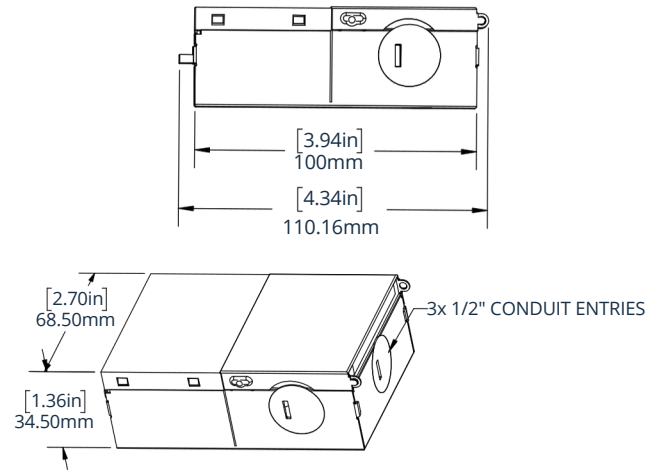
**Note:** Compatible with TRIAC and ELV dimmers. ELV dimmers provide optional dimming performance and quiet operation.

## DIMENSIONS

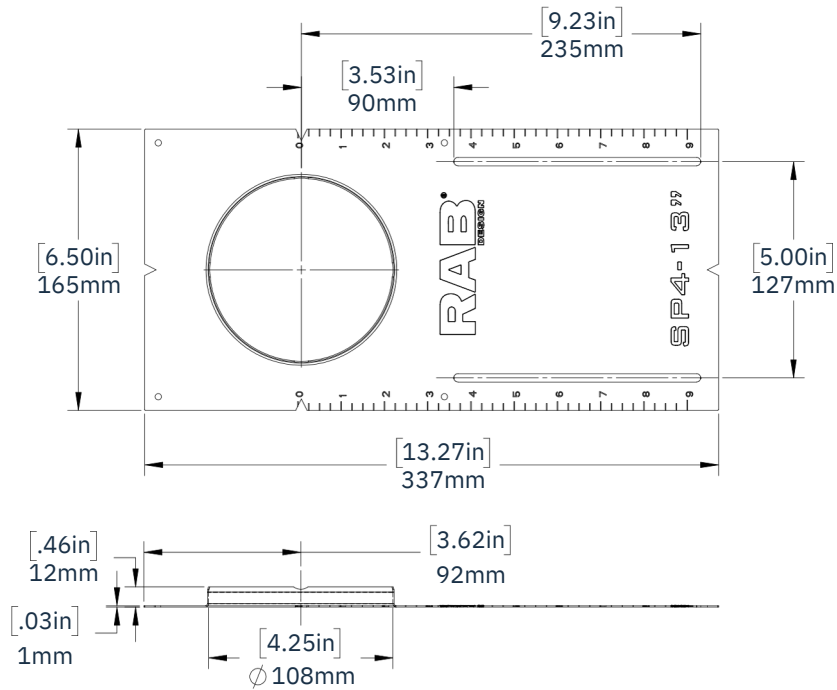
**RDL4G FIXTURE HEAD**



**JUNCTION BOX**



**SP4-ROUGH IN PLATE**



## PHOTOMETRIC PLOTS

### RDL4G-LED12 MOUNTED AT 8 FT

LUMENS: 896 LM

MAX CALCULATED VALUE: 18.66 FC

