

RD-L8

Linear Adjustable Sign / Facade Light

RAB Design's RD-L8 is a **sturdy, sleek design, and high performance** sign light suitable for any wall washing applications. The fixture is designed to be rotated 360° allowing light to be directed in any direction. The RD-L8 is a highly versatile sign light available in lengths of 2', 4', 6' and 8' that can be combined to form a continuous run. Both wall mount and parapet mounting options are available to suite a wide variety of sign and wall lighting applications.

IDEAL APPLICATIONS



Sign Lighting



Wall Washing

FEATURES

- Rugged extruded aluminum construction to withstand weather conditions.
- Clear downlight lens and translucent casing encapsulating the aluminum extrusion can be rotated 360° to direct light in any direction.
- High quality LEDs are used to provide even illumination and maintain brightness in cold weather conditions.
- Standard aluminum arm extends 18" from the wall, and custom arm lengths available upon request.
- Standard wall mount option or parapet mount available.
- Aluminum die cast mounting hardware provided.
- Two supplied mounting discs connected to arms for ease of mounting onto the wall.
- The standard finish is natural aluminum in PC housing.
- Each fixture uses its own power supply.
- High efficiency dimmable driver.
- Continuous run applications are available - please consult Customer Service.



SPECIFICATIONS

PERFORMANCE	
Lumens	1070 lm/foot
Efficacy	97 lm/W
CCT	3000K, 4000K, 5000K
LED Lifetime (L70)	100,000 Hrs
CRI	≥ 80
ELECTRICAL	
Watts	11 W/foot
Voltage	120-277V, 347V
Dimming	0-10 V
Power Factor	0.98
THD	< 20%
CONSTRUCTION	
Housing	Aluminum extrusion encapsulated in coextruded polycarbonate sleeve
Lens	Clear Polycarbonate
Finish	Natural Aluminum
Operating Temperature	-40°C to 40°C
CERTIFICATIONS	
cULus Listed for Canada and USA, per UL 2108, CSA C22.2 No. 250.0 Wet Location	

INSTALLATION IMAGES



Wall mount - single fixture



Parapet mount (+ top view) - three single fixtures



Dual configurations (same or different lengths can be combined)

ORDERING GUIDE



Model	Configuration	Wattage	Voltage	Colour Temp.	Finish	Mounting
RD-L8	1X2	LED20	B - 120-277V*	3K - 3000K	NAT - Natural Aluminum in PC housing	Blank - Wall mount*
	1X4	LED40	C - 347V	4K - 4000K*		
	1X6	LED60				
	1X8	LED80		5K - 5000K		
	2X2	LED40				
	2X4	LED80				
	2X6	LED120				
	2X8	LED160				
	2+4	LED60				
	2+6	LED80				
	2+8	LED100				
	4+6	LED100				
	4+8	LED120				
	6+8	LED140				

*Standard configuration.

**Custom arm lengths are available upon request, please reach out to Customer Success for a quote.

In the Configuration column of the Ordering Guide:

When “1X” is being used, it represents a single mount fixture, either wall mount or parapet.

When “2X” is being used, it represents a combination of two identical fixture lengths, either wall mount or parapet.

For example: 2X6 represents 2 sections of 6' fixtures combined together

When “+” is being used, it represents a combination of two different fixture lengths, either wall mount or parapet.

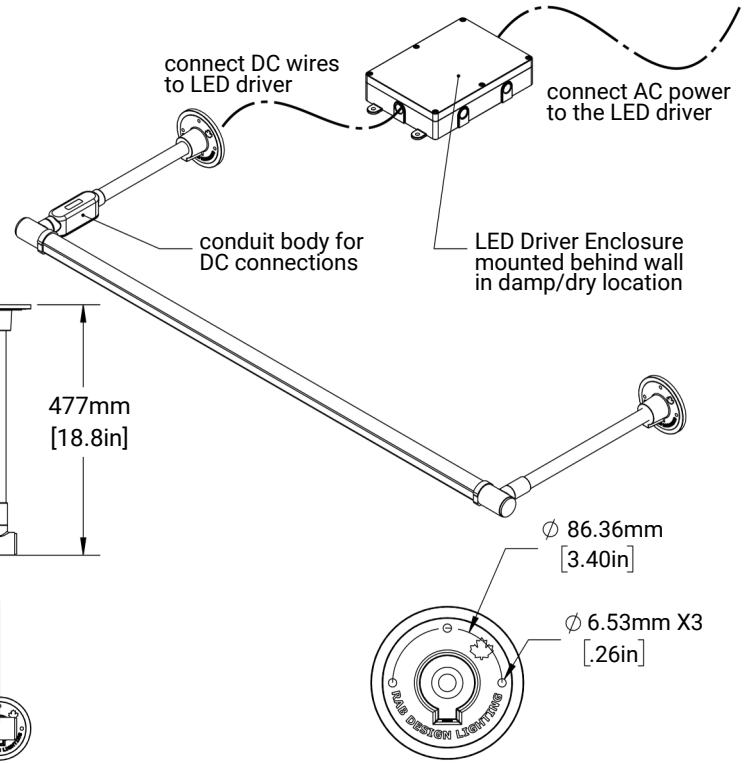
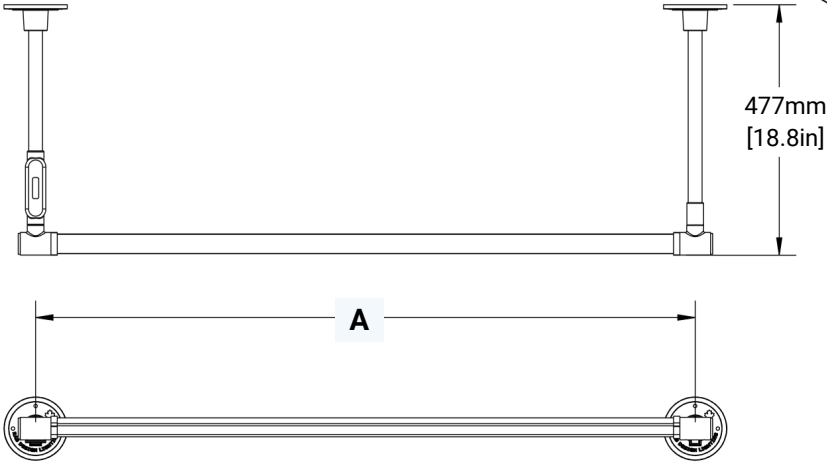
For example: 4+6 represents a 4' fixture combined with a 6' fixture

For more details, please refer to dimensional drawings.

DIMENSIONS

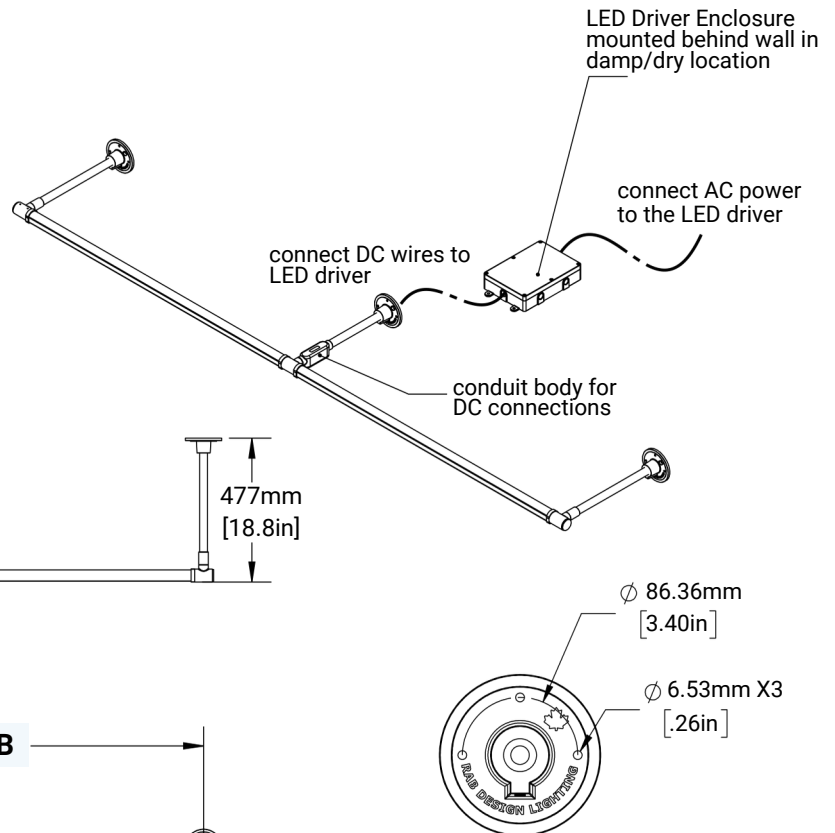
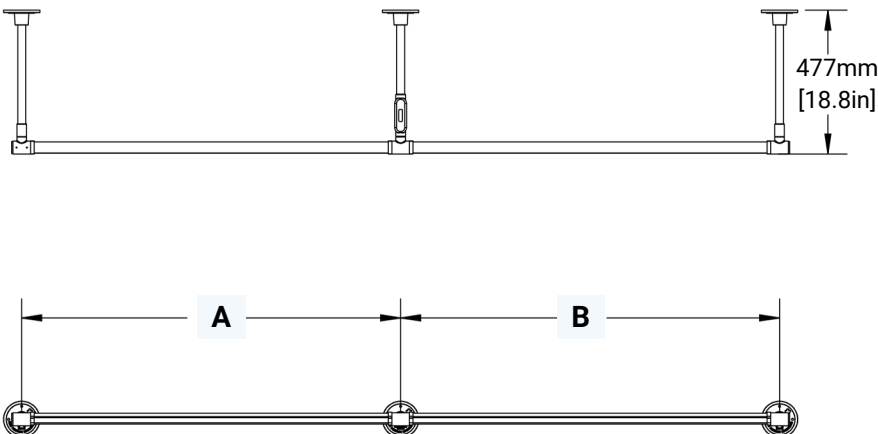
Single Wall Mount:

RD-L8 CONFIGURATION	A
RD-L8-1X2-LED20	26.5"
RD-L8-1X4-LED40	49.5"
RD-L8-1X6-LED60	72.6"
RD-L8-1X8-LED80	95.6"

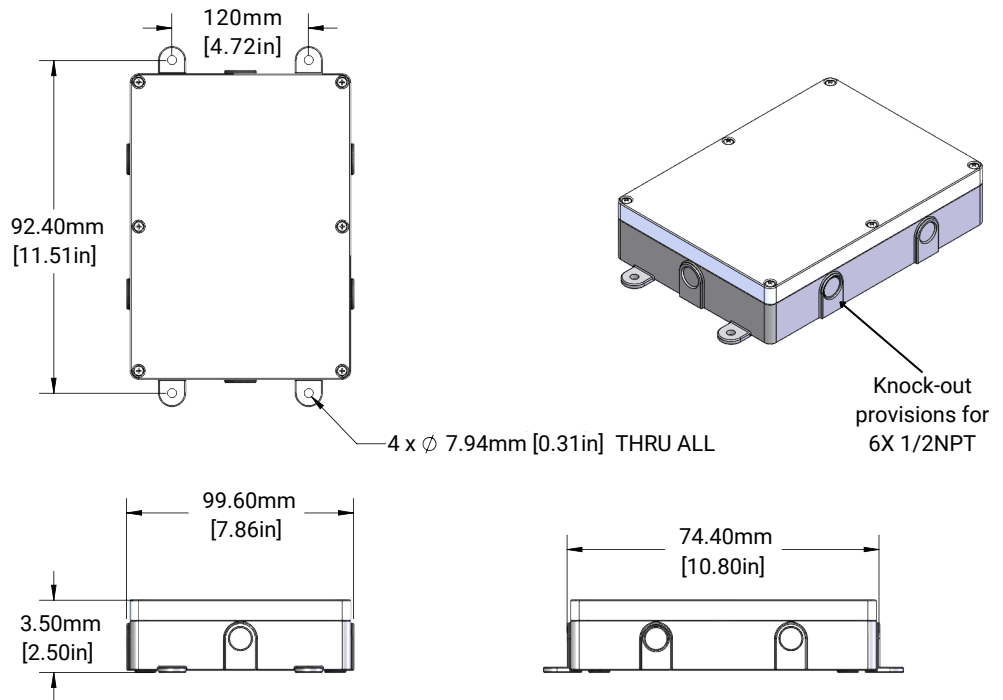


Dual Wall Mount:

RD-L8 CONFIGURATION	A	B
RD-L8-2X2-LED40	26.5"	26.5"
RD-L8-2X4-LED80	49.5"	49.5"
RD-L8-2X6-LED120	72.6"	72.6"
RD-L8-2X8-LED160	95.6"	95.6"
RD-L8-2+4-LED60	26.5"	49.5"
RD-L8-2+6-LED80	26.5"	72.6"
RD-L8-2+8-LED100	26.5"	95.6"
RD-L8-4+6-LED100	49.5"	72.6"
RD-L8-4+8-LED120	49.5"	95.6"
RD-L8-6+8-LED140	72.6"	95.6"

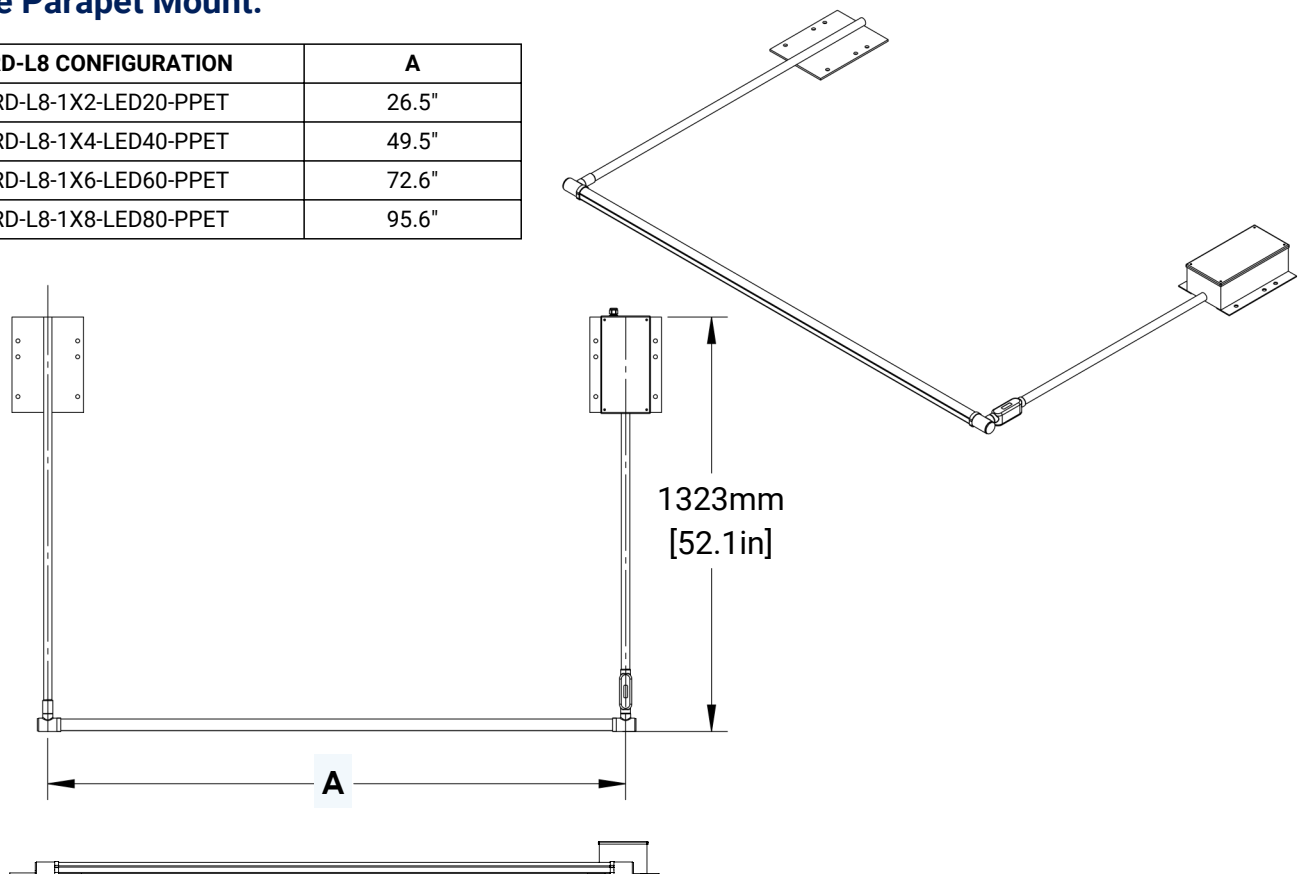


Wall Mount LED Driver Enclosure:



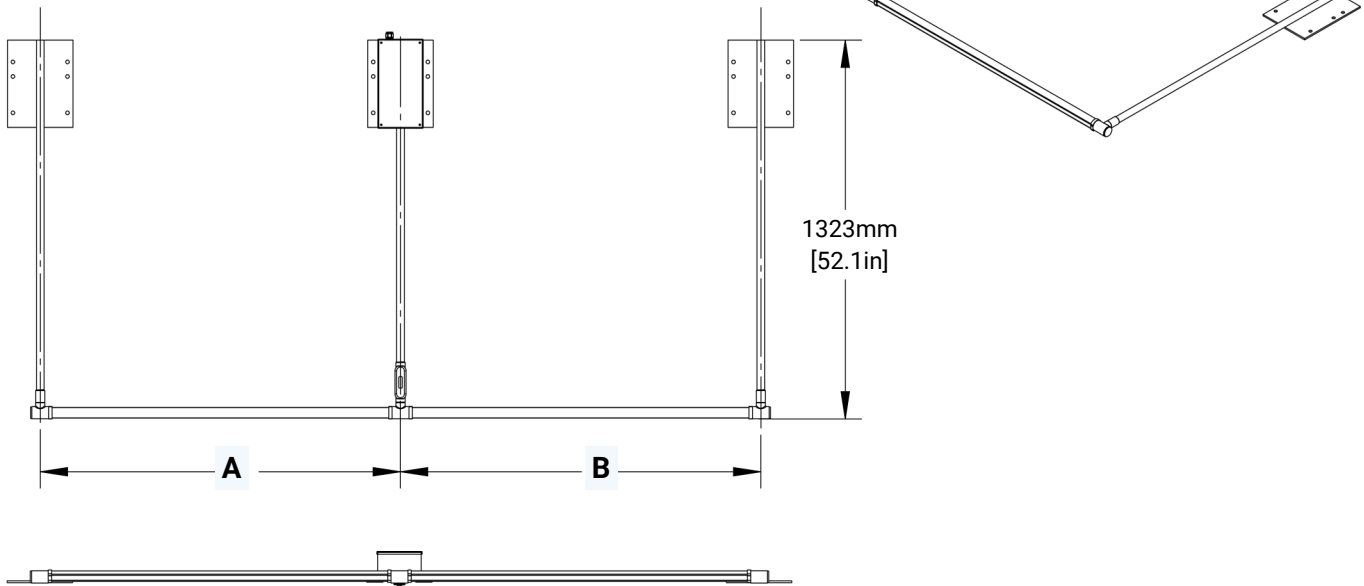
Single Parapet Mount:

RD-L8 CONFIGURATION	A
RD-L8-1X2-LED20-PPET	26.5"
RD-L8-1X4-LED40-PPET	49.5"
RD-L8-1X6-LED60-PPET	72.6"
RD-L8-1X8-LED80-PPET	95.6"

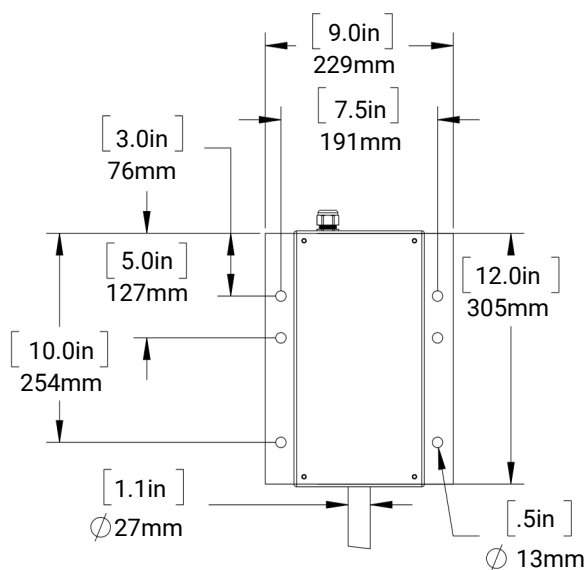


Dual Parapet Mount:

RD-L8 CONFIGURATION	A	B
RD-L8-2X2-LED40-PPET	26.5"	26.5"
RD-L8-2X4-LED80-PPET	49.5"	49.5"
RD-L8-2X6-LED120-PPET	72.6"	72.6"
RD-L8-2X8-LED160-PPET	95.6"	95.6"
RD-L8-2+4-LED60-PPET	26.5"	49.5"
RD-L8-2+6-LED80-PPET	26.5"	72.6"
RD-L8-2+8-LED100-PPET	26.5"	95.6"
RD-L8-4+6-LED100-PPET	49.5"	72.6"
RD-L8-4+8-LED120-PPET	49.5"	95.6"
RD-L8-6+8-LED140-PPET	72.6"	95.6"



Parapet LED Driver Enclosure:



Parapet Roof Mount:

