

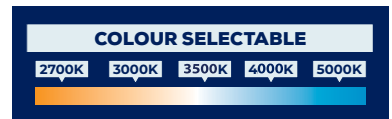


RDL4-LED

4" Round Downlight



Fixture with driver box



IDEAL APPLICATIONS:

- ✓ Hallways
- ✓ Offices
- ✓ Living Rooms
- ✓ Kitchens
- ✓ Retail Stores
- ✓ Residential Settings

DESCRIPTION:

4" down light edge-lit with dimmable driver ideal for new construction and remodeling projects in residential and commercial applications. 5 position switch on driver box for adjusting colour temperature. Approved for use in Insulated Contact Ceiling.

FEATURES:

- Die cast aluminum outer frame with powder coated white paint finish and polystyrene frosted lens.
- Slim Profile – fixture is less than 0.5 inches and junction box is less than 1.4 inches.
- Colour Selectable Unit – choose between 2700K/3000K/3500K/4000K/5000K using a switch on the junction box.
- IC (Insulation Contact) Rated Recessed Downlight with driver junction box. IC Rated implies that the unit is approved for direct contact with insulation.
- Fixture has high performance edge-lit LEDs with a CRI greater than 80, delivering an even spread of light.
- 26.5" cable length and external mounting tabs on the junction box for easy installation. Template for ceiling hole included in box.
- Fixture is dimmable using a TRIAC or ELV dimmer.
- 4" Rough-in construction plate available as an accessory.

SPECIFICATIONS:

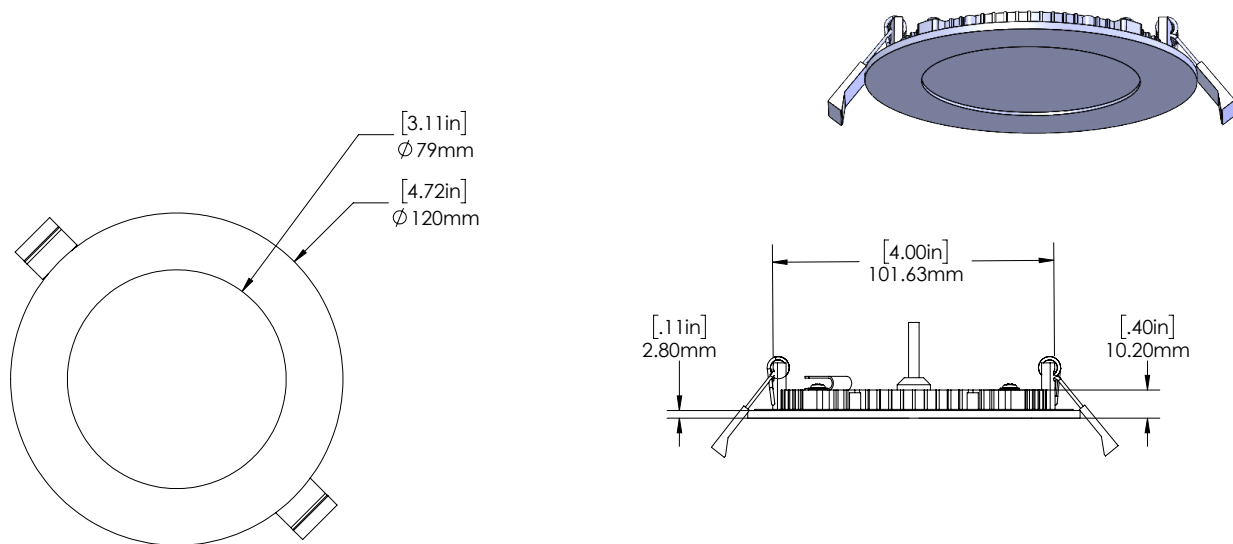
Size (in)	4"
Input Power	10.2W
Lumens	645.3 lm
Efficacy	63.3 lm/W
Voltage	120V
CCT (K)	Variable Kelvin (2700K/3000K/3500K/4000K/5000K)
CRI	81.4
Dimming	TRIAC/ELV (10%-100%)
Power Factor	0.97
LED Life (L81)	100,000 hours
Housing Finish	White
Housing Details	Die Cast Aluminum
Lens Details	Frosted Lens
Conduit Entries (Junction Box)	Two 1/2" knockouts
Cable Length	26.5"
Operating Temp.	-20°C to +40°C (-4°F to +104°F)
Certifications	ETL, IC Rated, Wet Location, 5 Year Warranty

Values shown are for 4000K setting.

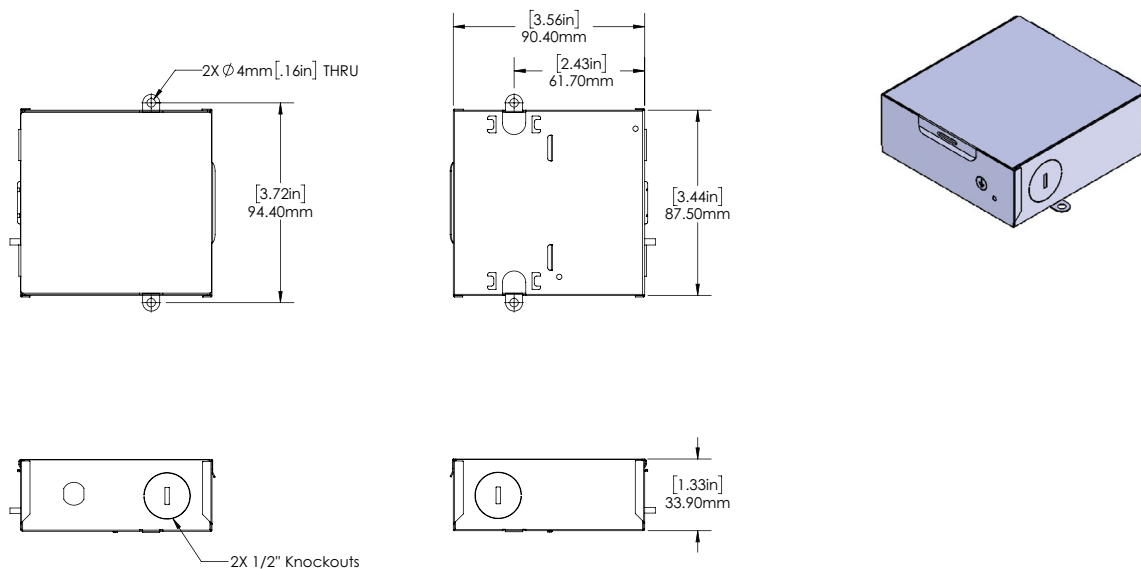


DIMENSIONS:

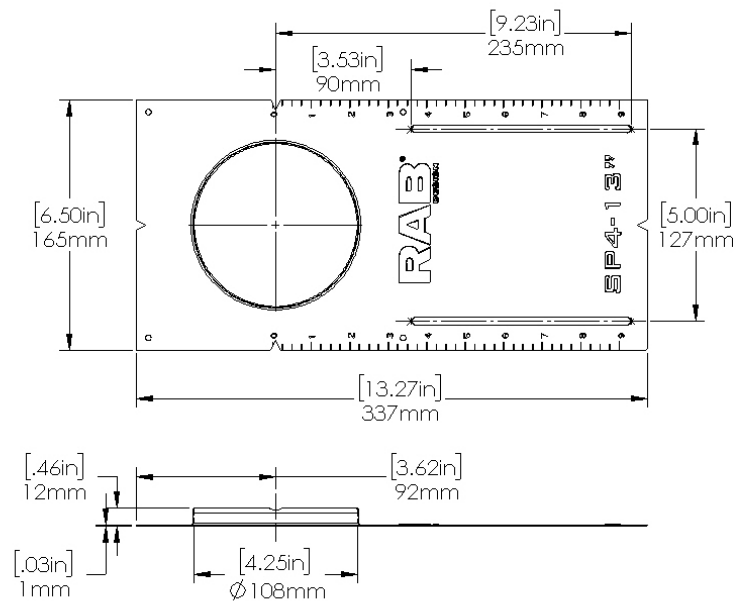
RDL4 FIXTURE HEAD:



DRIVER BOX DIMENSIONS:



SP4 ROUGH IN PLATE:

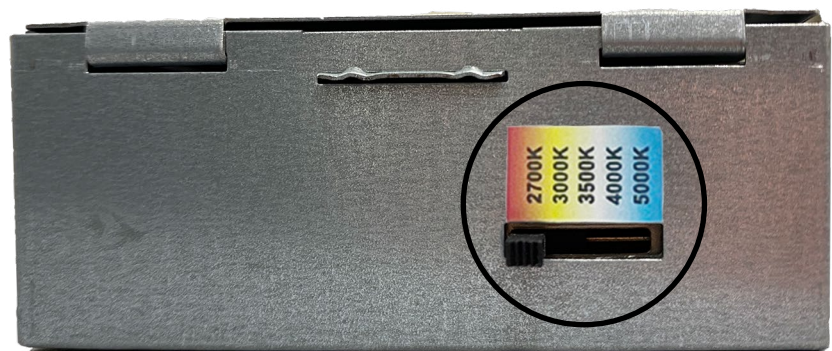


COLOUR SELECTABLE SWITCH:

The switch is located on the side of the driver box

Easily change the colour temperature with a flip of a switch.

Left to Right:
2700K/ 3000K/ 3500K/
4000K/ 5000K



AMPERAGE DRAW

CURRENT (A)	
120V	
RDL4-LED	0.1A

TM-21 ESTIMATED LUMEN MAINTENANCE

	50,000 Hours	75,000 Hours	100,000 Hours
RDL4-LED	90.3%	85.7%	81.4%

Life hours are derived from IESNA LM-80 testing report and projected per IESNA TM-21 calculations.

ORDERING GUIDE:


RDL4	LED10	A	VK	WHT	TRIAC	
-------------	--------------	----------	-----------	------------	--------------	--

Fixture	Wattage	Voltage	Colour Temp.	Finish	Dimming	Packaging
	LED10	A - 120V	VK - Colour Selectable (2.7K/3K/3.5K/4K/5K)	WHT - White	TRIAC - TRIAC/ ELV Dimming	BLANK - Individual packaging 1/12 - 12 PCS Bulk Packaging

STOCK CODES:

081567	RDL4-LED10-A-VK-WHT-TRIAC
083755	RDL4-LED10-A-VK-WHT-TRIAC-1/12

ACCESSORIES SOLD SEPERATELY:

	083756 - SP4 - ROUGH IN PLATE 4"
------------------------------------------------------------------------------------	----------------------------------

COMPATIBLE DIMMERS:

Brand	Model	Dimming Protocol
LUTRON	MAELV-600	ELV
	CTELV-303P	ELV
	DVELV-300P	ELV
	DVELV-303P	ELV
	DVSCELV-300P-SW	ELV
	DVSCELV-303P-SW	ELV
	MSCELV-600M-SW	ELV
	MACL-153M-SW-C	TRIAC
	AYCL-153P	TRIAC
	CTCL-153 PDH	TRIAC
	DVRF-5NE (Caseta Diva Smart Dimmer)	ELV
	PD-5NE (Caseta Original Smart Dimmer)	ELV
	PD-6WCL (Caseta Original Smart dimmer)	TRIAC
LEVITON	66EV-10W	ELV
	DSE06-10Z	ELV
	6674-P0W	TRIAC
	DSL06-1LM	TRIAC
EATON	TUL06P-C2	TRIAC
LEGRAND	RH703PTUW (Reverse mode is recommended)	ELV

Note: Compatible with TRIAC and ELV dimmers. ELV dimmers provide optional dimming performance and quiet operation.