



STEEL POLES

SSSP



The SSSP square straight steel poles are designed for top or side mounted luminaires, with a universal drill pattern on all four sides of the pole. Silicon plugs are included to cover all unused holes. SSSP poles are available in 20' and 30' lengths in a dark bronze finish.

IDEAL APPLICATIONS

- ✓

Parking lots
- ✓

Roads & Walkways
- ✓

Industrial and Commercial Buildings

SPECIFICATIONS

	SSSP4-20-BRZ-G11	SSSP5-30-BRZ-G07
CONSTRUCTION		
Height	20 ft	30 ft
Pole Dimension	4" Square	5" Square
Gauge	11	7
Thickness	0.119"	0.179"
Bolt Circle Dimension (BCD)	11" (From 10.6" to 11.4")	
Bolt Square Dimension (BSD)	7.78" (From 7.3" to 8.4")	
Anchor Bolt Size	3/4" x 30" x 4"	1" x 36" x 4"
Hand Hole Size	5.3" x 3.3" (Refer detailed drawing on page 4 for exact location)	
Ground terminal	Accessible from inside the Hand hole	
Finish	Bronze (Polyester powder-coat dark bronze finish over Galvanized steel)	
Weight	150 lbs	368 lbs
Accessories	Base Cover, Tenon, Bull Horn, Top Cap, Anchor Bolts & Template (Anchor Bolts and Template are packed in one box)	

CERTIFICATIONS

CSA C22.2 NO. 206:22, CSA C22.2 No. 250.0-21, per UL 1598:2021,
CSA S6-19 (Canadian Highway Bridge Design Code), Welding Standard: CSA W47.1

COMPATABLE FIXTURE FAMILY

HELIX	JAGUAR	AL	SKY2S	FLxS
				

 Quick Ship Available



ORDERING GUIDE

SSSP4-20-BRZ-G11	
Stock Code	083970
Height	20 ft
Finish	Bronze
Gauge	11

SSSP5-30-BRZ-G07	
Stock Code	083972
Height	30 ft
Finish	Bronze
Gauge	7

ACCESSORIES SOLD SEPARATELY

	SSSP4-20-BRZ-G11		SSSP5-30-BRZ-G07	
	083978	TOP CAP F/SSSP4 BRZ	083979	TOP CAP F/SSSP5 BRZ
	083962	BASE COVER F/SSSP4- BRZ	083963	BASE COVER F/SSSP5- BRZ
	083964	ANCHOR BOLT & TEMPLATE - 3/4" x 30" x 4" (Set of four)	083966	ANCHOR BOLT & TEMPLATE - 1" x 36" x 4" (Set of four)
	083969	PA1-BRZ-2-3/8" TENON F/SSSP4-G11	083980	PA1-BRZ-2-3/8" TENON F/SSSP5-G07
	083967	PA2-180-BRZ-2-3/8" TENON F/SSSP4-G11	083968	PA2-180-BRZ-2-3/8" TENON F/SSSP5-G07
	084600	PA3-180-BRZ-2-3/8" TENON F/SSSP4-G11	084601	PA3-180-BRZ-2-3/8" TENON F/SSSP5-G07
	084606	PA4-90-BRZ-2-3/8" TENON F/SSSP4-G11	084607	PA4-90-BRZ-2-3/8" TENON F/SSSP5-G07

- Anchor bolts are sold separately and can be pre-shipped upon request.

EPA WIND LOAD RATING										
	70mph		80mph		90mph		100mph		110mph	
	EPA (ft²)	Max Weight (lbs)	EPA (ft²)	Max Weight (lbs)	EPA (ft²)	Max Weight (lbs)	EPA (ft²)	Max Weight (lbs)	EPA (ft²)	Max Weight (lbs)
SSSP4-20-BRZ-G11	11.0	275	7.0	175	4.5	113	2.4	60	0.9	23
SSSP5-30-BRZ-G07	12.0	300	6.0	150	3.0	75	N/A	N/A	N/A	N/A

NOTE:

- EPA and Max. Weight allowances are calculated based on CSA S6-19 (Canadian Highway Bridge Design Code) with design method based on AASHTO LRFD LTS-1 2015 (Specifications for Structural Supports for Highway Signs, Luminaires and Traffic Signals).

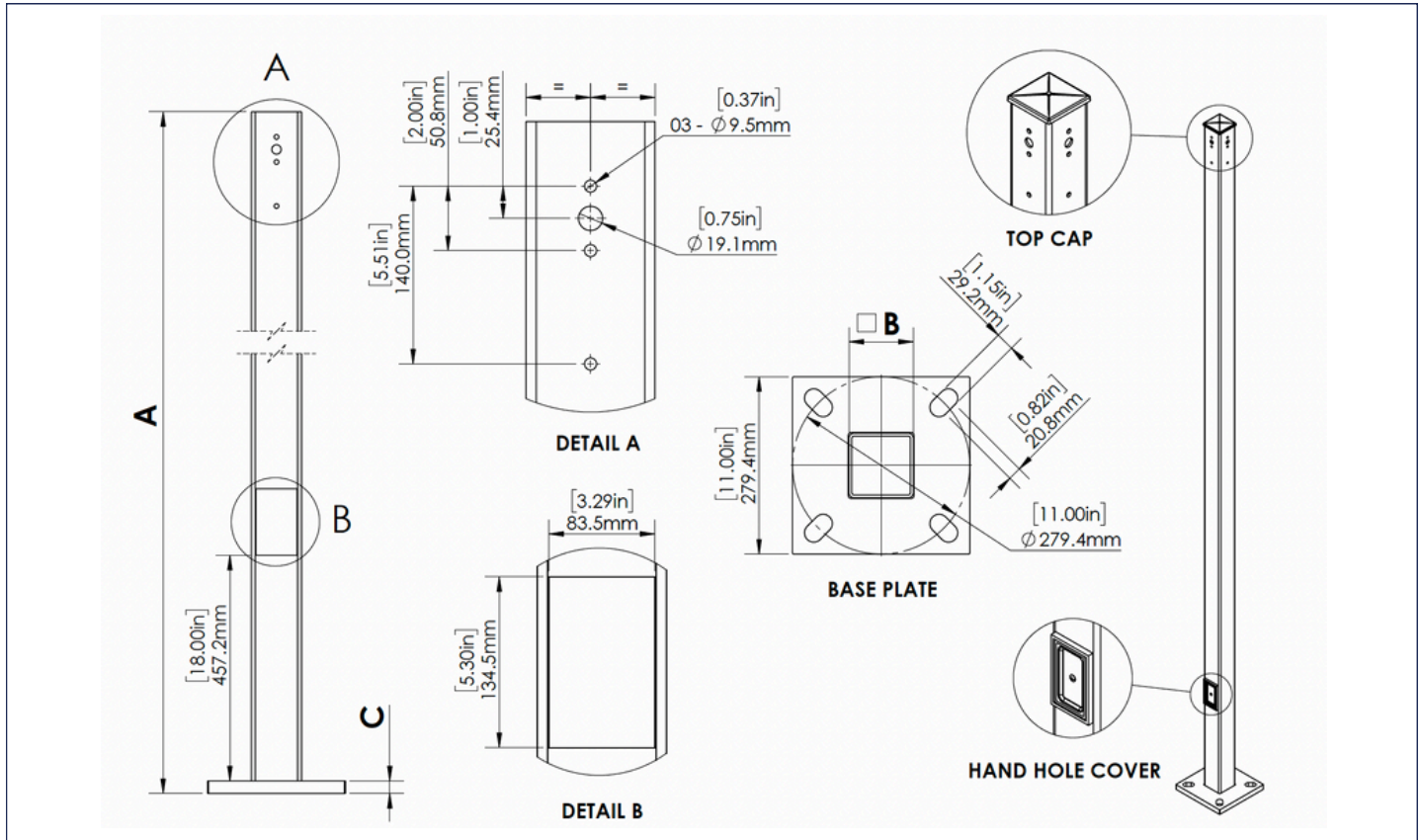
SSSP4-20-BRZ-G11		
ACCESSORY	EPA (ft²)	WEIGHT (lbs)
PA1-SSSP4	0.1	3.30
PA2-180-SSSP4	0.4	19.80
PA3-180-SSSP4	0.5	35.30
PA4-90-SSSP4	0.5	55.10

SSSP5-30-BRZ-G07		
ACCESSORY	EPA (ft²)	WEIGHT (lbs)
PA1-SSSP5	0.1	4.40
PA2-180-SSSP5	0.4	19.80
PA3-180-SSSP5	0.5	35.30
PA4-90-SSSP5	0.5	59.50

NOTES:

- Always consult local authorities to determine maximum wind velocities, gusting and unique wind conditions for each specific application.
- Allowable pole EPA for jobsite wind conditions must be equal to or greater than the total EPA for fixtures, arms, and accessories to be assembled to the pole. Responsibility lies with the specifier for correct pole selection. Installation of poles without luminaires or attachment of any unauthorized accessories to poles is discouraged and shall void the manufacturer's warranty.
- Wind speeds and listed EPAs are for ground mounted installations. Poles mounted on structures (such as bridges and buildings) must consider vibration and coefficient of height factors beyond this general guide; Consult local and federal standards.
- Wind Induced Vibration brought on by steady, unidirectional winds and other unpredictable aerodynamic forces are not included in wind velocity ratings.
- Extreme Wind Events like, Hurricanes, Typhoons, Cyclones, or Tornadoes may expose poles to flying debris, wind shear or other detrimental effects not included in wind velocity ratings.
- Due to our continued efforts to improve our products, product specifications are subject to change without notice.
- RAB Design Lighting is not responsible for the foundation design.
- If poles are stored outside, all protective wrapping must be removed immediately upon delivery to prevent finish damage.

DIMENSIONS



DIMENSION FOR DIM DRAWING

POLES	A	B	C	GAUGE
SSSP4-20	20' (6096 mm)	4" (101.6 mm)	1" (25.4 mm)	11
SSSP5-30	30' (9144 mm)	5" (127 mm)	1" (25.4 mm)	07

DRILL PATTERN COMPATIBILITY WITH RAB FIXTURES (ACCESSORY)

HELIX1/HELIX2/JAG1S/JAG2S

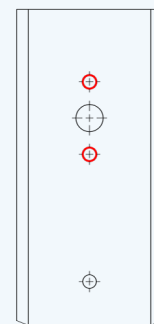
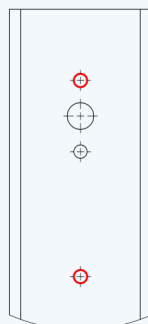
WITH (020010 - DIRECT MOUNT FOR ROUND/SQUARE POLE)

FL5S/FL6S/FL8S/FL9S

WITH (082762 - MOUNTING ARM FOR ROUND/SQUARE POLE)

SKY2S WITH (DIRECT POLE MOUNT)*

AL1/AL2/AL3 WITH (002238 - ARM FOR SQUARE POLE)

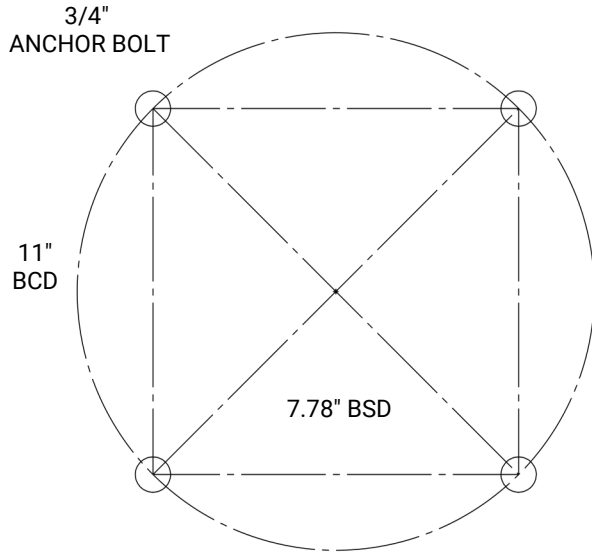


NOTES:

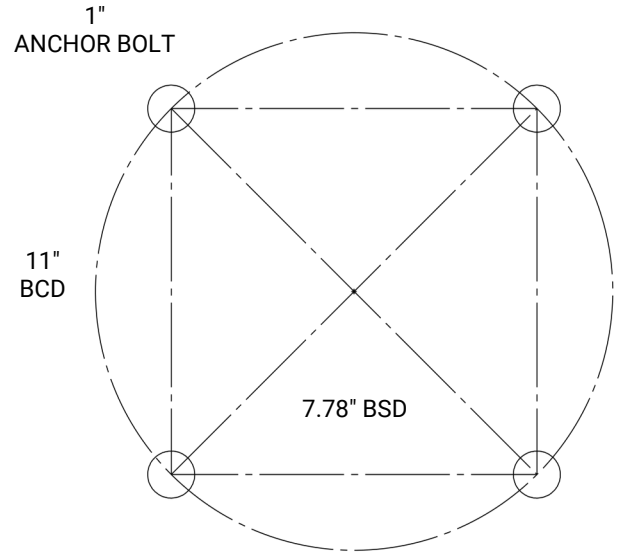
- The marked pre-drilled holes (in red) are compatible with the respective RAB DESIGN products and mounting accessories (as specified in brackets).
- For SKY2S, Direct Pole mount comes with the fixture.

ANCHOR BOLT TEMPLATE

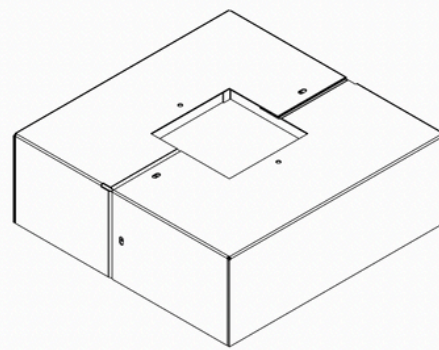
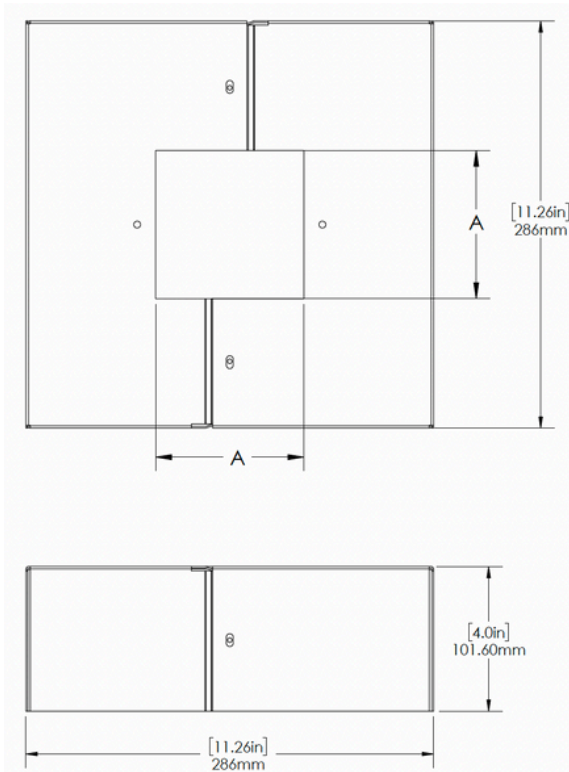
SSSP4-20'



SSSP5-30'

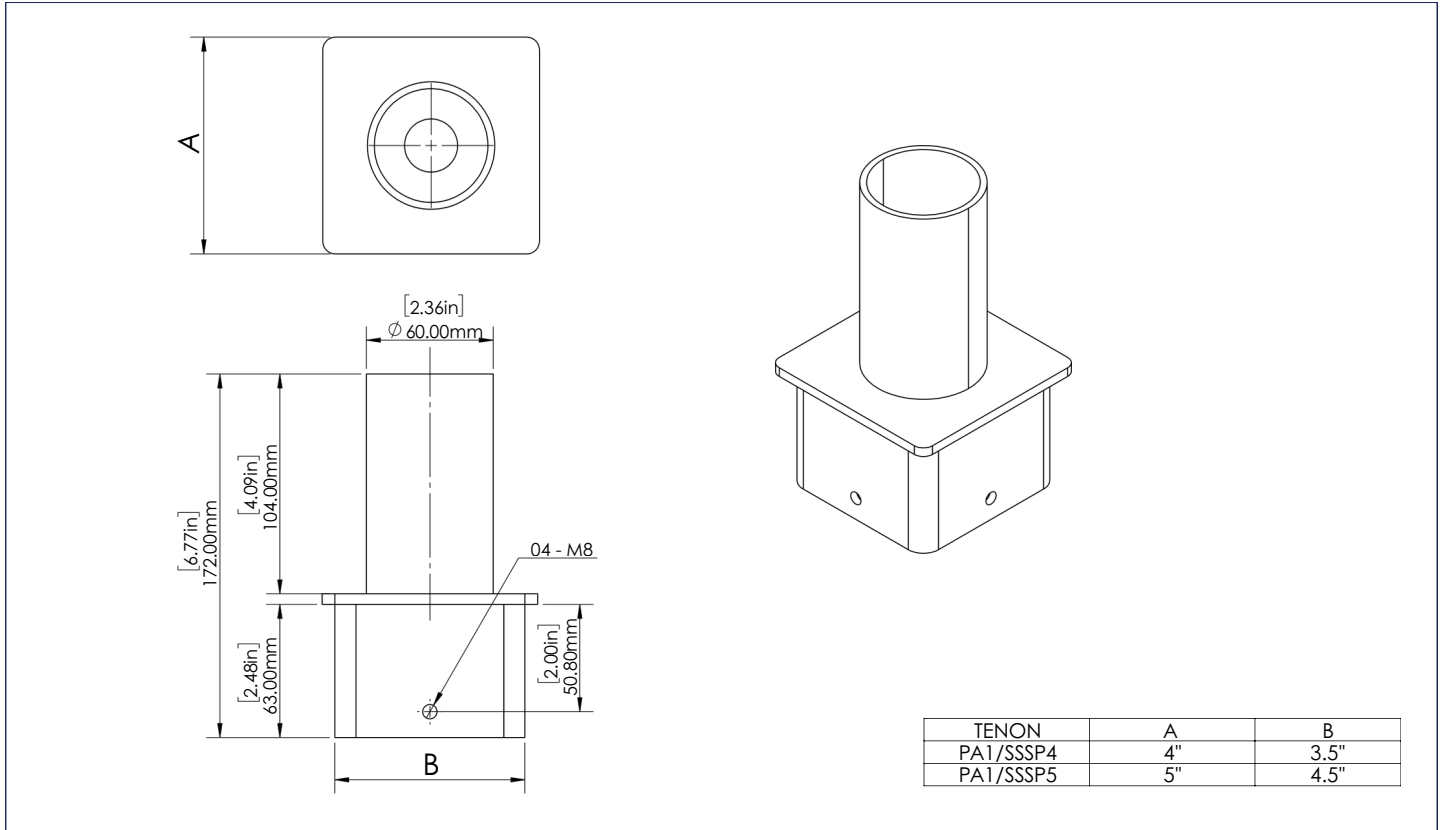


BASE COVER

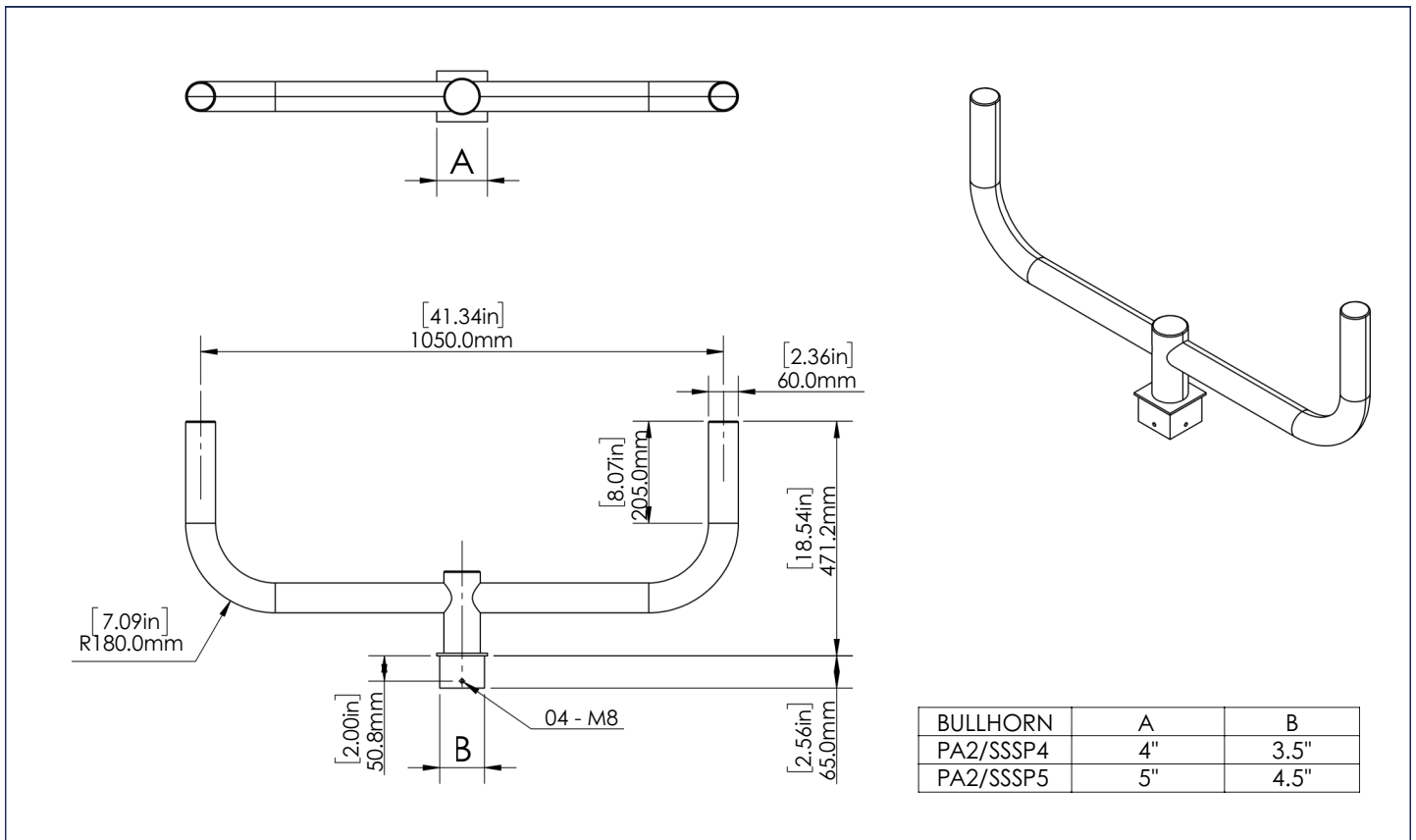


BASE COVER	A
SSSP4	4.09"
SSSP5	5.08"

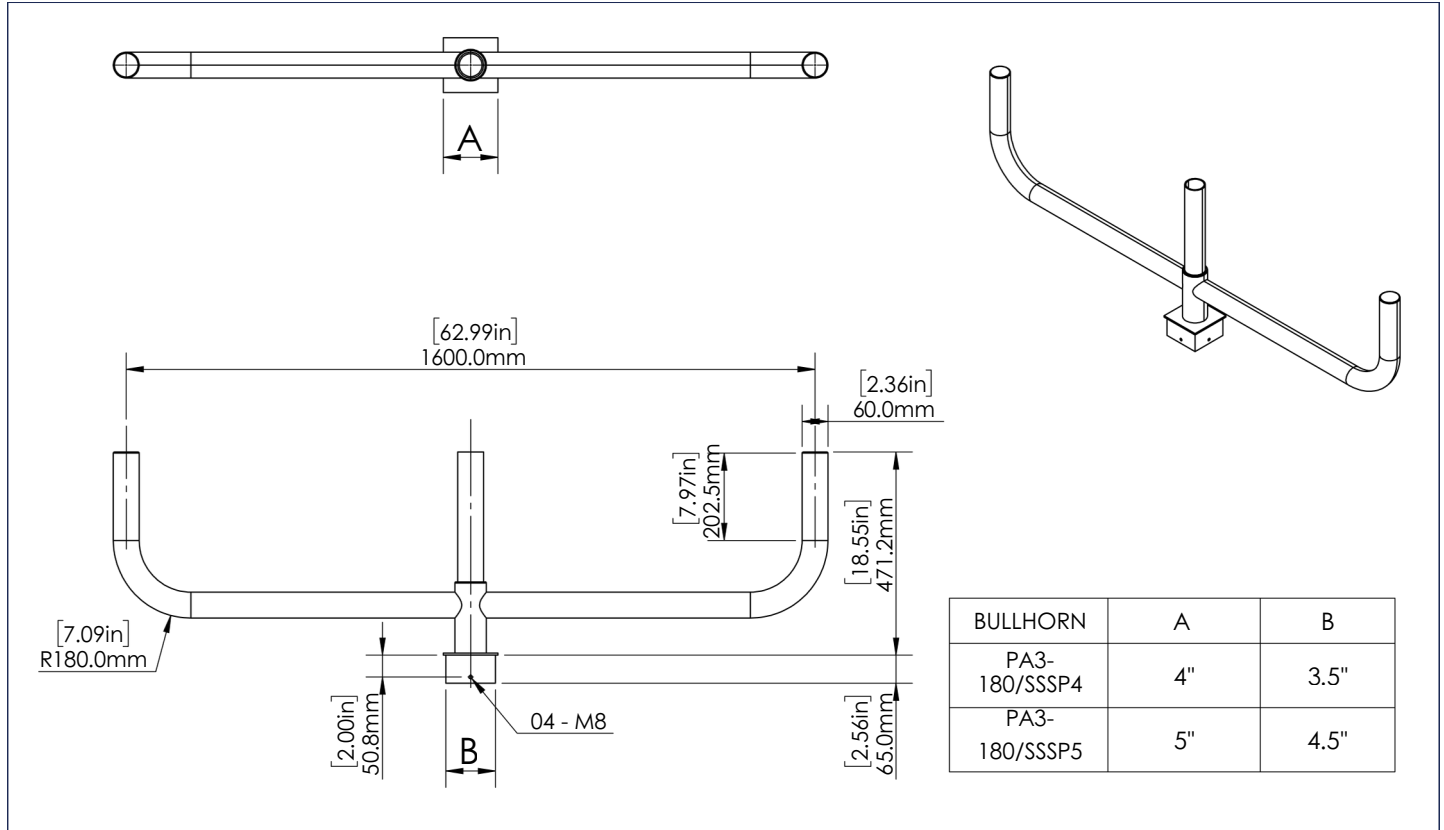
TENON - PA1



BULLHORN - PA2-180



BULLHORN - PA3-180



BULLHORN - PA4-90

