



Linear Highbay

LH4S



The LHS-LED series delivers versatile, high-efficiency linear highbay luminaires with selectable features and a compact design. Durable and contractor-friendly, it's perfect for industrial and commercial applications, replacing HID and fluorescent systems. With Controlled capability, it integrates plug-and-play motion and daylight sensors wirelessly and with bluetooth mesh network, providing advanced lighting control without hubs or gateways.

IDEAL APPLICATIONS

- ✔ Large Distribution Centers

✔ Service Bays
- ✔ Factories

✔ Big-Box Retail
- ✔ Gymnasiums

SPECIFICATIONS

| PERFORMANCE | |
|--------------------------------|--|
| Light Output | Lumen Selectable |
| | 69400/65200/58700/52200 lm |
| Efficacy | 163lm/W |
| CCT | 4000K/5000K (CCT Selectable) |
| Beam Distribution | Wide (90°x90°) |
| Replaces up to | 1000W MH |
| CRI | 85 |
| ELECTRICAL | |
| Wattage | 440/400/360/320W |
| Voltage | 120-347V |
| Surge Protection | 6kV (Built-in Driver) as per IEC/EN61000-4-5 |
| Power Factor | 0.99 |
| THD | <3% |
| Cord | Pre-installed 10' Power Cable (3x18 AWG) |
| Battery Backup | 9W (Option Available) |
| CONSTRUCTION | |
| Housing | Die-cast Aluminum |
| Paint | Glossy White, Polyester Powder Coat |
| Lens | Glare-free Polycarbonate |
| Weight | 12.8lbs |
| AMBIENT OPERATING TEMPERATURE | |
| -40°C to 50°C (-40°F to 122°F) | |

| MOUNTING | |
|---|--|
| Suspension Mount - V-Hooks & Chain (Included), Aircraft Cable Surface Mount, Pendant Mount | |
| CERTIFICATIONS | |
| cULus Listed for Canada and USA, per UL 1598, CSA C22.2 No. 250.0, DLC Premium | |
| CONTROLS | |
| Dimming | 0-10V (Dim to Off) 10%-100% |
| Sensor | PIR/Microwave Motion Sensor/Dimmer with Remote Control, Bluetooth PIR Motion & Daylight Harvest Sensor |
| Switch | Bluetooth Line Voltage switch, Bluetooth Battery Powered switch/Handheld Remote |
| LUMEN MAINTENANCE | |
| L80 | L90 |
| >100,000 hrs | >60,000 hrs |
| MAX AMPERAGE DRAW (A) | |
| 120V | 4.074 |
| 208V | 2.350 |
| 240V | 2.037 |
| 277V | 1.765 |
| 347V | 1.409 |

Note: Electrical and light performance data is based on LM79 test reports, measured at maximum wattage, 4000K, and 120V.

Life hours are derived from IESNA LM-80 testing report and projected per IESNA TM-21 calculations.











ORDERING GUIDE

| LH4S | LED440A320 | H | VK | W | WHT | DIM | |
|-------------|-------------------|--------------|------------------------------------|--------------------------------------|-------------|---------------------|---|
| Fixture | Wattage | Voltage | Colour Temp. | Beam Distribution | Finish | Dimming | Battery Backup |
| LH4S | LED440A320 | H - 120-347V | VK - CCT Selectable (4000K/ 5000K) | W - Wide Beam Distribution (90°x90°) | WHT - White | DIM - 0-10V Dimming | BLANK - No Battery Backup BBK9 - 9W Battery Backup |

Default Setting: 440W, 4000K

STOCK CODE

084597

LH4S-LED440A320-H-VK-W-WHT-DIM

INCLUDED IN THE BOX

PRE-INSTALLED 10 FT POWER CORD



V HOOKS & 6 FT SUSPENSION CHAIN

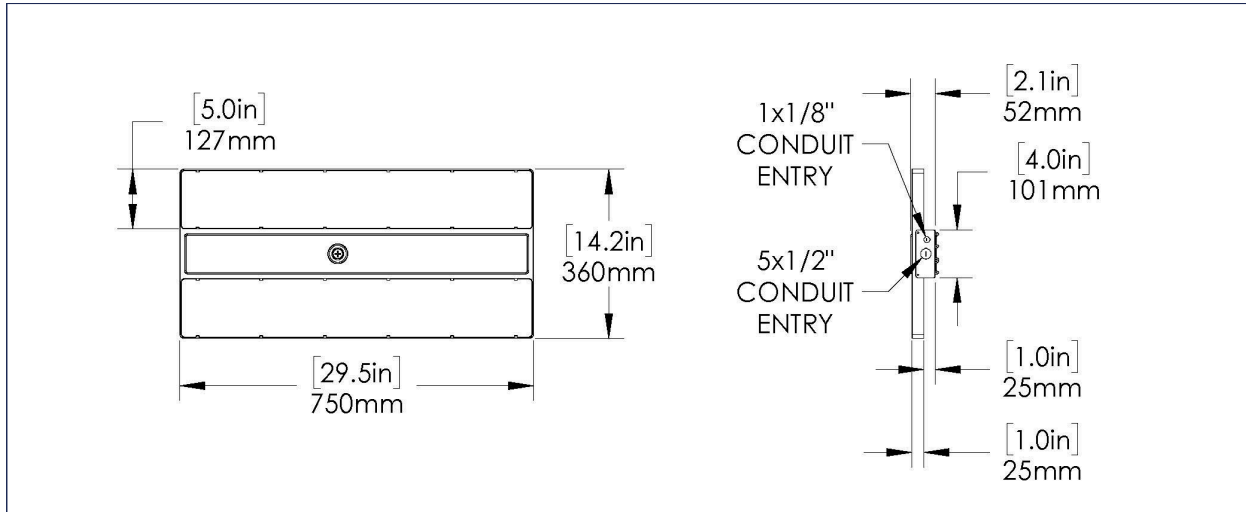


ACCESSORIES SOLD SEPARATELY

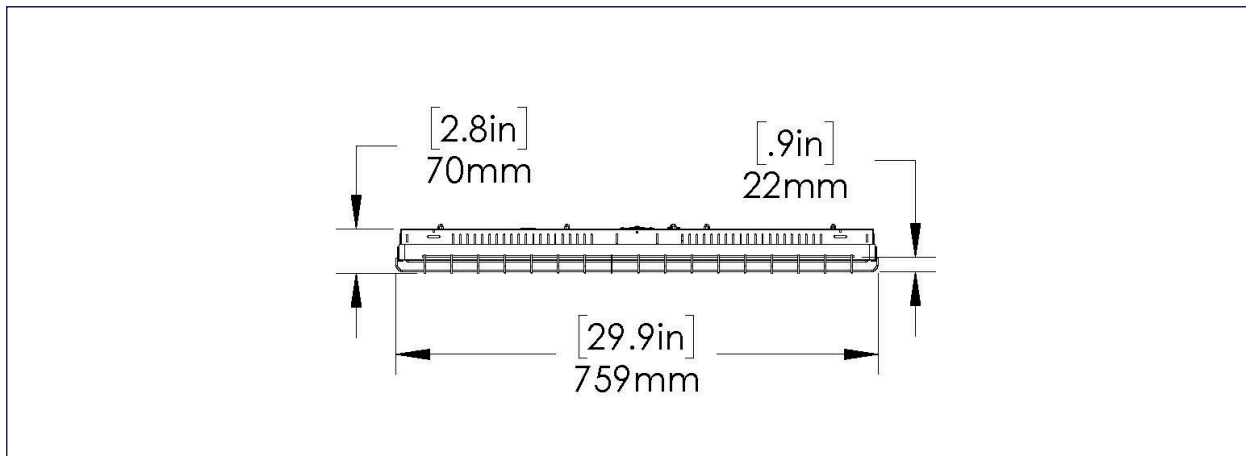
| | | | | | | | | |
|--------|--|---|--|---|---|--|--|--|
| 081960 | AIRCRAFT CABLE - 10 FT LENGTH |  | 084210 | HIGHBAY BLUETOOTH PIR MOTION/DLH SENSOR & ADAPTER |  | | | |
| 084616 | LH4S SURFACE MOUNT KIT |  | 084215 | BLUETOOTH 3-KEY AC LINE VOLTAGE WALL SWITCH |  | | | |
| 084617 | LH4S PENDANT MOUNT KIT |  | 084633 | BLUETOOTH 5-KEY BATTERY POWERED WIRELESS WALL SWITCH & PLATE ² |  | | | |
| 084618 | LH4S WIRE GUARD |  | <div>¹ Occupancy sensing can be disabled to use as a dimmer only.</div> <div>² Wireless Bluetooth module can also be used as portable handheld remote control.</div> | | | | | |
| 080909 | MICROWAVE SENSOR (50 ft max height) ¹ | | | | | | | |
| 081300 | PIR SENSOR 1 (20ft max height) ¹ | | | | | | | |
| 081837 | PIR SENSOR 2 (40ft max height) ¹ | | | | | | | |
| 080970 | MOTION SENSOR REMOTE CONTROL | | | | | | | |

DIMENSIONS

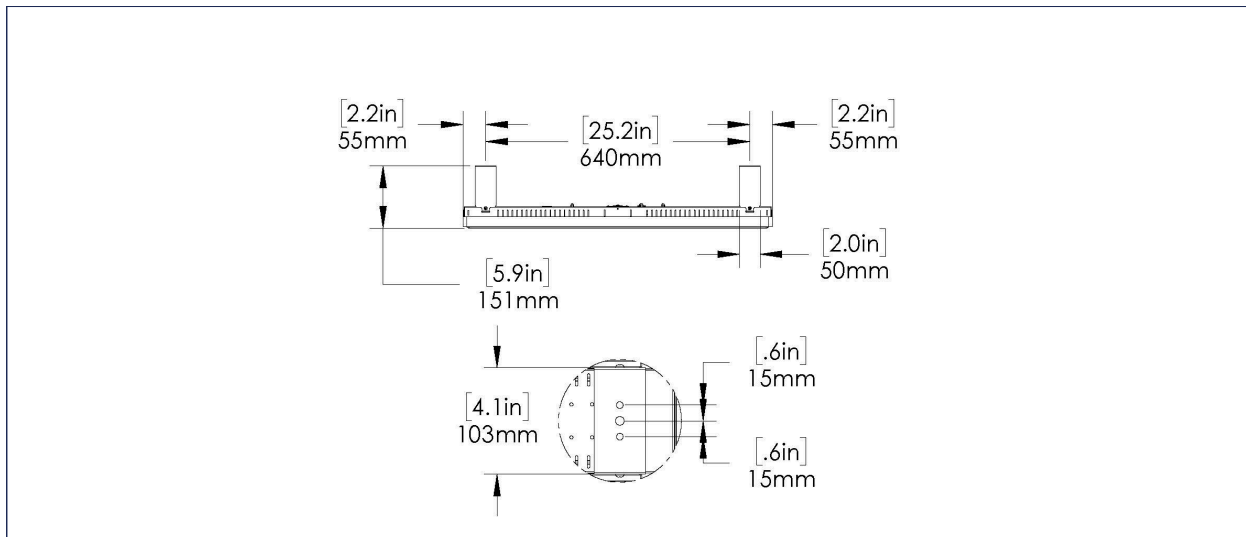
LH4S FIXTURE



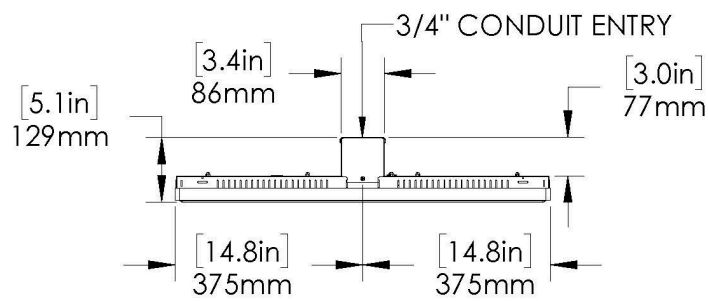
LH4S WIRE GUARD



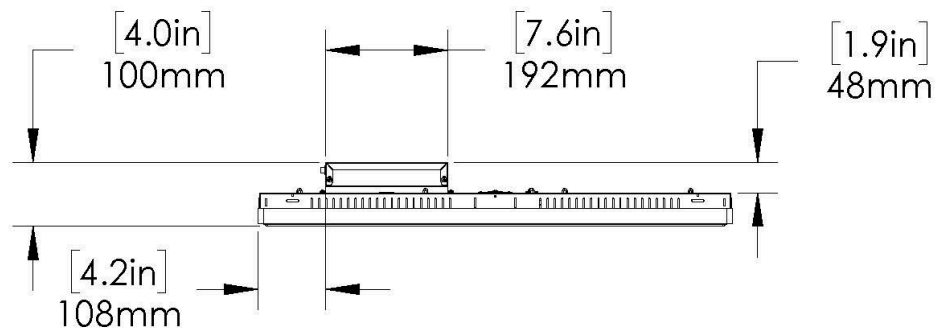
LH4S SURFACE MOUNT KIT



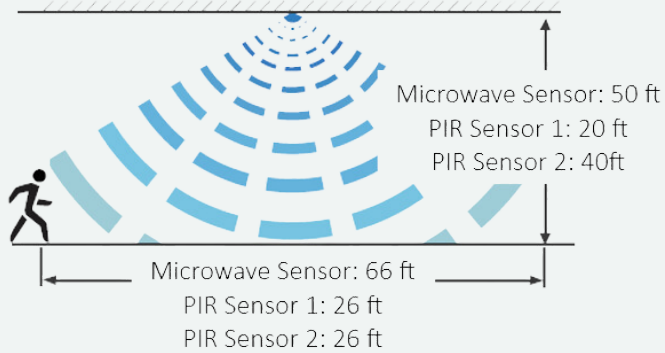
LH4S PENDANT MOUNT KIT



LH4S BATTERY BACKUP



MOTION SENSOR SPECIFICATIONS - PROGRAM USING REMOTE CONTROL

| | |
|--|--|
| Sensor Type | Microwave & PIR |
| Microwave Frequency | 5.8GHz +/- 75MHz |
| Operating Voltage | 12VDC |
| Operating Current | 30mA |
| Output Voltage | 0-10V |
| Stand-by Power | <0.5W |
| Detection Range |  |
| Maximum Detection Angle | 360° |
| Ambient Operating Temperature ¹ | -30°C to 60°C (-22F to 140F) |
| Indoor/Outdoor Use | Both Indoor & Outdoor |
| IP Rating | IP65 |
| Installation | Field installed - Wireless Plug & Play |

MOTION SENSOR PROGRAMMING

| | |
|------------------|--------------------------------------|
| Programming Tool | Highbay Motion Sensor Remote Control |
| Brightness | 70%/80%/90%/100%* |
| Sensitivity | 20%/50%/75%/100%* |
| Hold Time | 10s/1min*/10min/30min |
| Daylight Sensor | 10Lux/30Lux/50Lux/100Lux/Disabled* |
| Standby Dim | 10%/20%*/30%/50% |
| Standby Time | 1min*/30min/60min/+∞ |

- Default settings marked with *
- Default Setting: After no motion for 1min (hold time), the fixture will dim from 100% (brightness) to 20% (stand-by dim level). After no motion for another 1 min (stand-by time), the fixture will turn off.
- For instructions on programming the motion sensor remote control, please see the Installation Instructions.
- ¹When installed in the fixture, the system's ambient operating temperature is limited by the component with the lowest allowable range.

BATTERY BACKUP SPECIFICATIONS

| | |
|--|---|
| Input Power | 8W |
| Input Voltage | 120-347V |
| Output Power (Emergency Mode) | 9W |
| Recharge Current | 0-500mA |
| Recharge Time | 24 to 48 Hrs |
| Discharge Time | 90 min |
| Ambient Operating Temperature ¹ | 0°C to 60°C (32F to 140F) |
| Service Life | 50,000 Hrs |
| IP Rating | IP20 |
| Installation | Factory installed in a junction box that comes mounted on the fixture |
| Light Output ² | 1400 lm |

- ¹When installed in the fixture, the system's ambient operating temperature is limited by the component with the lowest allowable range.
- ²Lumen output with emergency battery backup can be calculated by multiplying the battery output power with the efficacy of fixture.

CONTROLLED

BLUETOOTH PIR MOTION & DAYLIGHT HARVEST SENSOR

FEATURES

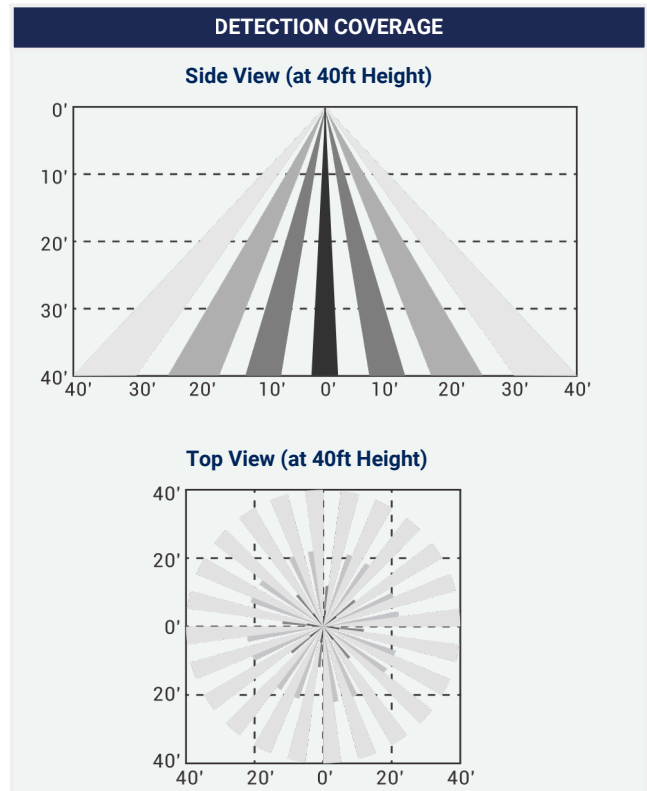
- PIR motion and daylight harvest sensor
- Easy wireless plug-and-play installation
- Bluetooth mesh network
- DLC - Networked Lighting Control (NLC) & Luminaire Level Lighting Control (LLLC)

| SPECIFICATIONS | |
|------------------------------------|---|
| Input Voltage | 12VDC |
| Input Current | 50mA Max. |
| Input Power | 0.6W |
| Output Current | 10mA Max. Sinking Current |
| Output Power | 0.1W |
| Dimming | Class 2, 0-10VDC |
| Bluetooth Transmit | 328ft Max. |
| Radio Frequency | 2.4GHz ±75MHz |
| Bluetooth Version | 5.0 |
| Housing Material | Polycarbonate (UL 94-5VA) |
| Housing Finish | White |
| Detection Range | 40-80ft |
| Mounting Height | 20-40ft |
| Indoor/Outdoor Use | Both Indoor & Outdoor Use |
| Operating Temperature ¹ | -30°C to 55°C (-22°F to 131°F) |
| Storage Temperature | -30°C to 85°C (-22°F to 185°F) |
| IP Rating | IP66 (Wet Location) |
| Installation | The audio jack to 3-PIN adaptor is pre-installed on the sensor for quick twist-lock installation ¹ |

¹When installed in the fixture, the system's ambient operating temperature is limited by the component with the lowest allowable range.

| DEFAULT SETTINGS | |
|-------------------|-----------|
| Motion Sensor | ON |
| Mode | Occupancy |
| High End Trim | 100% |
| Sensitivity | High |
| Hold Time (T1) | 20 min |
| Standby Dim | 50% |
| Standby Time (T2) | 1 min |
| Photocell | Off |
| Linkage | Off |
| Linkage Level | 100% |

Note: Program the sensor with the desired settings using the Controlled Mobile App (please refer to the Controlled App manual for instructions).



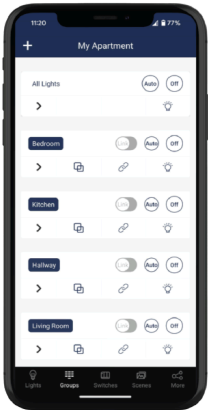
Bluetooth



CONTROLLED

RAB[®]
DESIGN

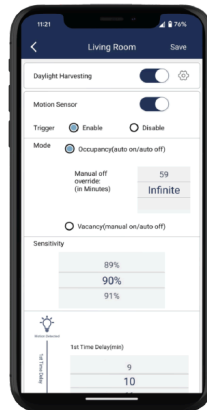
ControlLED Network Lighting Controls (NLC) delivers secure, wireless lighting management with Bluetooth Mesh and the ControlLED App. Integrated sensors enable automatic adjustments for comfort, safety, and efficiency.



Organized Workspaces:
Create Zones, Groups and Group Linkages.



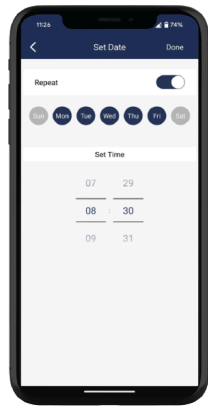
Dimming Lights:
Set dim level for groups or individual lights.



Motion and Daylight Harvest Sensors:
Custom sensor settings for groups or individual lights.



Scenes:
Create custom scenes for different scenarios.



Schedules:
Create custom schedules for recurring events.



Share Access:
Share access using QR codes.

Get the App!



RAB[®]
DESIGN

**Engineered by skilled hands,
for skilled hands.**

© RAB Design Lighting Inc. 2025. All rights reserved.
For more information, visit rabdesign.ca.

PHOTOMETRIC PLOTS

**LH4S-LED440A320-H-VK-W-WHT-DIM(440W 120V WIDE 4000K)
MOUNTED AT 30 FEET**

LUMENS 69432.4

MAX CALCULATED VALUE 36.99

