



AL2-LED

### APPLICATIONS

**Ideal for parking lots, roadways and perimeter lighting applications**

The AL-LED fixtures are high efficiency area lights with multiple beam patterns to suit a variety of applications. Intelligently designed, this series of fixtures provides superior lighting performance and significant energy savings over traditional fixtures

<b>Project</b>	
<b>Type</b>	
<b>Date</b>	
<b>Notes</b>	

### SPECIFICATIONS

#### Construction

Precision die cast aluminum housing with clear polycarbonate lens. The fixture offers superior heat sinking with air-flow fins on the top. The driver enclosure is separate from the optics for improved thermal management.

#### Optics

Unit has high efficiency injection molded optics that have an efficacy of over 100 lumens/watt. The LEDs have a color temperature of 5000K as standard. 3000K/4000K available as option. The CRI is greater than 70 and the operating temperature range is -40°C - to +40°C. LED life of 100,000 hours.

#### Beam Distribution

Available in T2, T3, T4 and T5 beam patterns for a wide range of applications.

#### Mounting

Standard unit is designed for standard 2-3/8" diameter pole mounting as a slip fitter. Unit can also be wall mounted using a custom designed Wall Mount bracket. Additional mounting options include 6" / 12" arms for square poles, 6" arm for round poles. Arms can also be designed with a custom designed radial cut for round poles. Bullhorn brackets also available.

#### Electrical

The standard unit has a high efficiency dimmable driver that operates at 120 - 277V. Driver has 0-10V dimming control. 347V also available.

#### Finish

Standard finish is Bronze. Please consult factory for custom colour.

#### Options

Photocell

#### AL1-LED Series

<b>Input Watts</b>	<b>64.9W</b>
<b>Lumens</b>	<b>7,312</b>
<b>Efficiency</b>	<b>112 lumens per watt</b>

<b>Input Watts</b>	<b>99.5W</b>
<b>Lumens</b>	<b>10,688</b>
<b>Efficiency</b>	<b>107 lumens per watt</b>

<b>Input Watts</b>	<b>117.4W</b>
<b>Lumens</b>	<b>12,537</b>
<b>Efficiency</b>	<b>107 lumens per watt</b>

#### AL2-LED Series

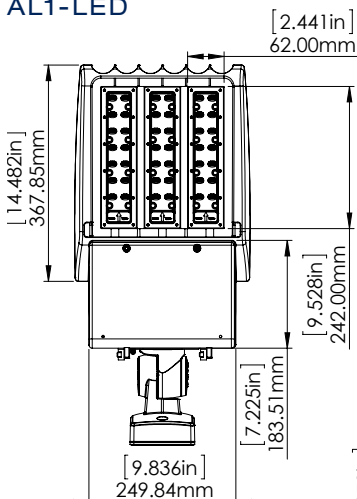
<b>Input Watts</b>	<b>148.5W</b>
<b>Lumens</b>	<b>16,245</b>
<b>Efficiency</b>	<b>109 lumens per watt</b>

<b>Input Watts</b>	<b>192.1W</b>
<b>Lumens</b>	<b>21,641</b>
<b>Efficiency</b>	<b>112 lumens per watt</b>

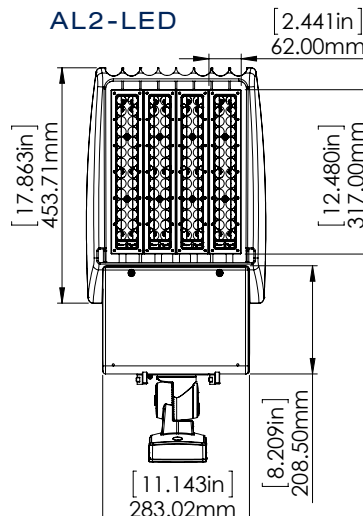
<b>Input Watts</b>	<b>245W</b>
<b>Lumens</b>	<b>27,092</b>
<b>Efficiency</b>	<b>110 lumens per watt</b>

### DIMENSIONS

#### AL1-LED



#### AL2-LED



## MOUNTING OPTIONS



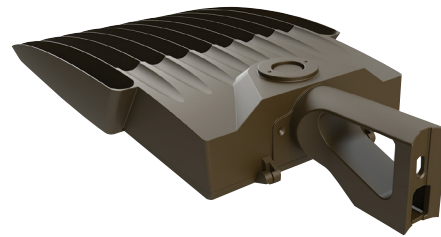
**Slipfit Mount**  
Optional - order separately



**Wall Mount Bracket**  
Optional - order separately



**Arm for square pole (available in 6"/12")**  
**Radial Cut Arm for a round pole**  
**(available in 6"/12")**  
Optional - order separately



**Arm for round pole (available in 6"/12")**  
Optional - order separately

## ORDERING GUIDE

AL	-		-		-		-		-					
		WATTS		VOLTAGE		COLOR TEMP		DIST.		FINISH		DRIVER		OPTIONS
AL1		LED60* LED90* LED120*		B - 120 - 277V* A - 120V C - 347V		5K - 5000K* 4K - 4000K 3K - 3000K		T2 - TYPE 2 T3 - TYPE 3 T4 - TYPE 4 T5 - TYPE 5		BRZ - BRONZE* CC - CUSTOM COLOUR		DIM - DIMMABLE DRIVER*		PC - Photocell
AL2		LED150* LED200* LED250*												

\* Standard configuration

\*\* All mounting configurations sold separately. Consult Customer Service.