



AL2-LED

### APPLICATIONS

**Ideal for parking lots, roadways and perimeter lighting applications**

The AL-LED fixtures are high efficiency area lights with multiple beam patterns to suit a variety of applications. Intelligently designed, this series of fixtures provides superior lighting performance and significant energy savings over traditional fixtures

Project	
Type	
Date	
Notes	

### SPECIFICATIONS

#### Construction

Precision die cast aluminum housing with clear polycarbonate lens. The fixture offers superior heat sinking with air-flow fins on the top. The driver enclosure is separate from the optics for improved thermal management.

#### Optics

Unit has high efficiency injection molded optics that have an efficacy (lumens/watt) of approx 100. The LEDs have a color temperature of 5000K as standard. 3000K/4000K available as option. The CRI is greater than 70 and the operating temperature range is -40°C to +40°C. LED life of 100,000 hours.

#### Beam Distribution

Available in T2, T3, T4 and T5 beam patterns for a wide range of applications.

#### Mounting

Standard unit is designed for standard 2-3/8" diameter pole mounting as a slip fitter. Unit can also be wall mounted using a custom designed Wall Mount bracket. 6" / 12" arms for round or square poles, various Bullhorn brackets also available.

#### Electrical

The standard unit has a high efficiency driver that operates at 120 - 277V. 347V also available.

#### Finish

Standard finish is Bronze. Please consult factory for custom colour.

#### Options

Photocell

#### AL1-LED Series

Input Watts	<b>62W</b>
Lumens	<b>6,076</b>
Efficiency	<b>98 lumens per watt</b>

Input Watts	<b>90W</b>
Lumens	<b>9,114</b>
Efficiency	<b>101 lumens per watt</b>

Input Watts	<b>120W</b>
Lumens	<b>12,152</b>
Efficiency	<b>101 lumens per watt</b>

#### AL2-LED Series

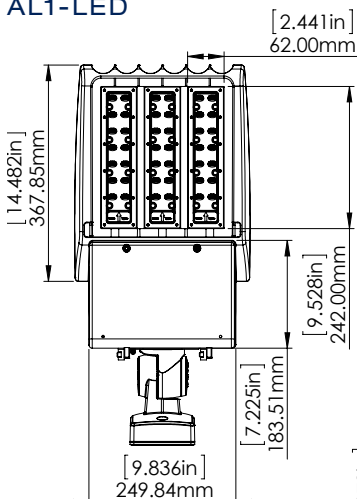
Input Watts	<b>150W</b>
Lumens	<b>15,190</b>
Efficiency	<b>101 lumens per watt</b>

Input Watts	<b>200W</b>
Lumens	<b>20,090</b>
Efficiency	<b>100 lumens per watt</b>

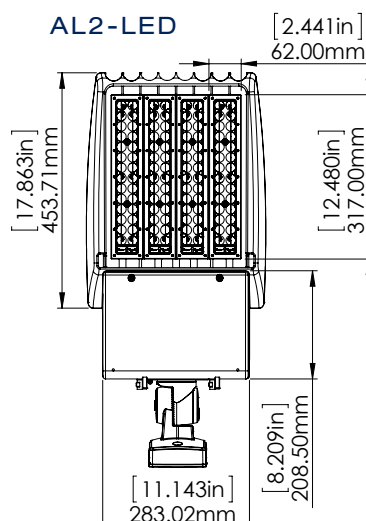
Input Watts	<b>250W</b>
Lumens	<b>24,990</b>
Efficiency	<b>100 lumens per watt</b>

### DIMENSIONS

#### AL1-LED



#### AL2-LED



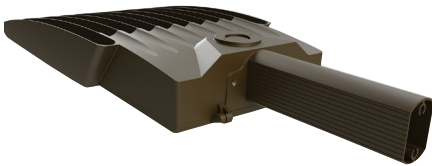
## MOUNTING OPTIONS



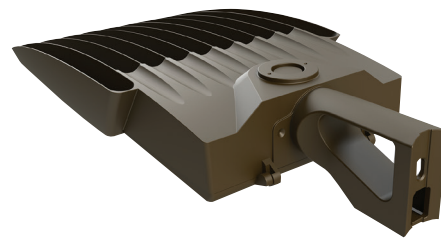
**Slipfit Mount**  
 Optional - order separately



**Wall Mount Bracket**  
 Optional - order separately



**Arm for square pole**  
 Optional - order separately



**Arm for round pole**  
 Optional - order separately

## ORDERING GUIDE

AL	-		-		-		-		-	
WATTS		VOLTAGE		COLOUR TEMP		FINISH		MOUNTING**		OPTIONS
AL1	LED60*	B - 120 - 277V* A - 120V C - 347V	5K - 5000K* 4K - 4000K 3K - 3000K	BRZ - BRONZE* CC - CUSTOM	SF - Slipfit			PC - Photocell		
	WM - Wall Mount									
	S6 - 6" Arm for Square Pole									
AL2	LED90*				S12 - 12" Arm for Square Pole					
	R6- 6" Arm for Round Pole									
	R12 - 12" Arm for Round Pole									
	LED120*									
	LED150*									
	LED200*									
	LED250*									

\* Standard configuration

\*\* All mounting configurations sold separately