



FLS - FACADE LIGHTER

The Facade-Lighter is a highly versatile form of facade and sign lighting available in 4', 6' and 8' lengths. It incorporates all the features which make installation and servicing simple and economical. An aluminum, waterproof ballast housing is supplied with each assembly. .

BALLAST HOUSING Extruded aluminum, waterproof ballast housing incorporates a built-in junction box. The ballast cover has a neoprene gasket and is secured with stainless steel screws. Three 1/2" Conduit entries..

FIXTURE BODY Sheet metal housing with a specular reflector. Within the body is a wiring raceway which contains two conductors, which run the entire length of the body.

BALLAST All ballasts are either 120 or 347V High Output for T12 lamps. Ballast and ballast boxes are remote mount.

LAMP Not included.



ARMS 4 foot steel arms. Single units are shipped with two arms Dual units are shipped with three arms.

MOUNTING The Facade Lighter is designed and approved for mounting from the roof in the horizontal position and aiming down only.

FINISH Standard finish is powder coat paint in white. For other colours please consult factory.



www.rabdesign.ca

Catalog Code

FLS

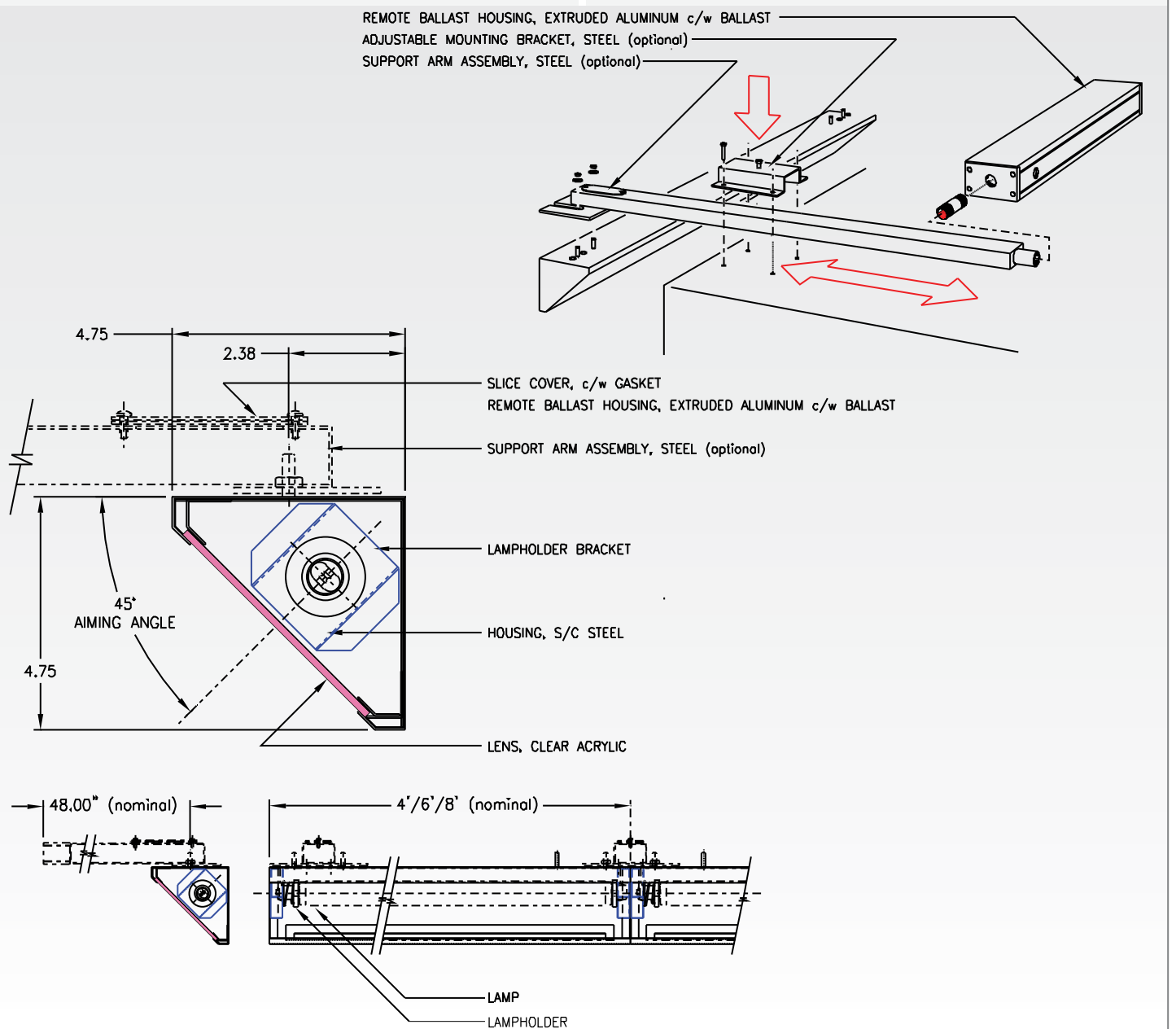
ASSEMBLY

14HO - 1 X 4' RUN
16HO - 1 X 6' RUN
18HO - 1 X 8' RUN
24HO - 2 X 4' (8 FOOT RUN)
26HO - 2 X 6' (12 FOOT RUN)
28HO - 2 X 8' (16 FOOT RUN)
46HO - 1 X 4' + 1 X 6'
(10 FOOT RUN)
48HO - 1 X 4' + 1 X 8'
(12 FOOT RUN)
68HO - 1 X 6' + 1 X 8'
(14 FOOT RUN)

120 347

VOLTAGE

LAMPS BY OTHERS



www.rabdesign.ca