



## HALINE 1500W QUARTZ BY THORN

*A compact quartz flood light with a unique feature being yoke mounted and bottom hinged. Ideal for construction sites, fishing vessels, advertising and security applications.*

**HOUSING** Precision die-cast aluminum (LM6) housing. Housing has a powder coat paint finish.

**REFLECTOR** Aluminum, dimpled textured and anodized.

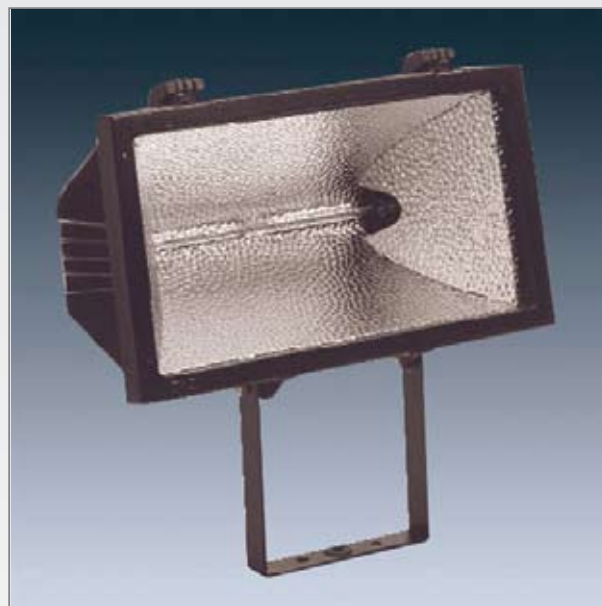
**LENS FRAME** Precision die-cast aluminum (LM6) with a rubber silicone gasket. Frame is bottom hinged for ease of maintenance. Frame is secured with a single slotted screw. Lens frame has a powder coat paint finish.

**LENS** Tempered clear glass, 5 mm thick.

**LENS GASKET** High temperature silicone gasket stays in place when relamping.

**LAMP** Lamp not included. Lamps are available in 208 or 240 volts.

**YOKE** Galvanized steel with a powder coat paint finish.



**SOCKET** Porcelain RSC base socket with spring loaded centre contacts and strain relieved 250°C Teflon insulated leads.

**MOUNTING** Yoke mounted drilled with three holes : centre hole 9mm and two additional holes 9mm at 70mm centres.

**FINISH** Standard finish is a textured black.

**RATING** IP55

## Catalog Code

FQ1500A

BLK

FINISH

BLK - BLACK

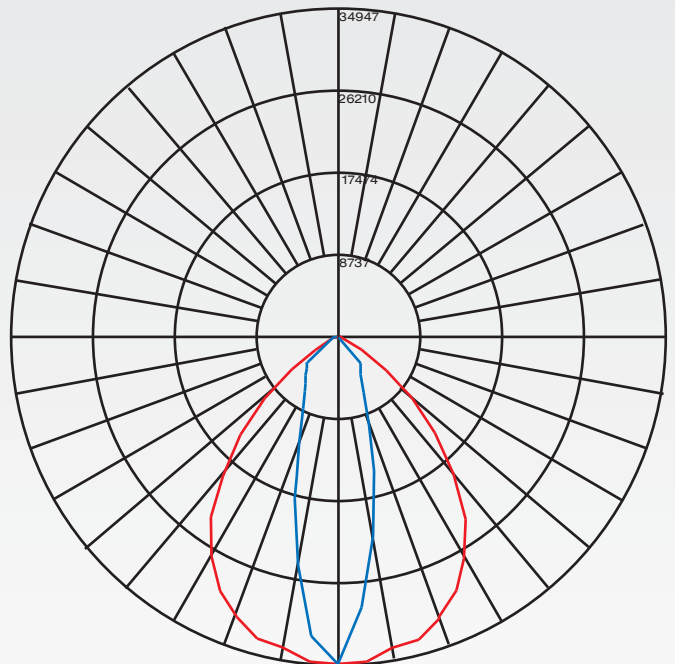
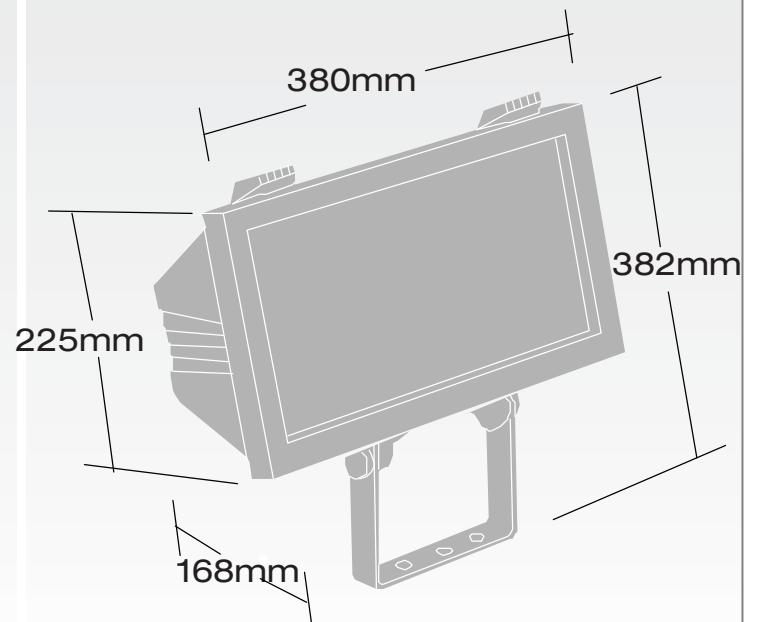
208/240

VOLTAGE

208/240\*

\* Lamp not included. Please note lamp is available in 208 or 240 volts

## Dimensions



MAXIMUM CANDELA = 34947 LOCATED AT HORIZONTAL ANGLE = 0, VERTICAL ANGLE = 0  
H - HORIZONTAL AXIAL CANDELA  
V - VERTICAL AXIAL CANDELA