



IG60801-6-LED INGROUND

The IG60801-6 Six(6) LED has 6, 1.2 watt LED's available in white, red, blue, green, cyan or amber in a narrow, medium or wide distribution. The IG60801-6 is ideal for use in landscape lighting, wall washing or accent lighting.

HOUSING Extruded aluminum frame with a die cast aluminum base and electrical J-box. Housing is separated into two compartments. The lower is for the LED driver and the upper section is for the LED assembly.

POUR BOX Black polymer housing. With entry for electrical wiring.

LED's Six (6) X 6 1.2 watt LED's mounted on a heat sink. The LED's are available in white, red, blue, green, cyan or amber and are rated for 50,000 hours.

OPTICS Available with narrow, medium or wide optic lens.

DRIVER Rated for 120 volts input power.

LENS ASSEMBLY Lower level lens is 3mm thick and the upper lens is 15mm. There is a space between the upper and lower glass lens assembly for an optional louvre assembly.

GLASS Tempered clear glass. Optional etched finish on the upper glass lens.



LOUVRE ASSEMBLY Optional louvre assembly is rotatable with louvres set at a 30 degree angle.

FACE PLATE Stainless steel with a bevelled edge. Optional orbital finish is also available. The face plate is secured with 4 stainless steel screws with optional tamper proof screws.

IP67 / 1500kg & 30km/hr

Catalog Code

IG60801-6LED

LED COLOUR

W - WHITE, R - RED, B - BLUE
G - GREEN, A - AMBER,
C - CYAN

LED OPTICS

N - NARROW, M - MEDIUM,
W - WIDE

TRIM FINISH

S/S - STAINLESS STEEL
S/S-O - STAINLESS STEEL
WITH ORBITAL GRIND

OPTIONS TP - TAMPERPROOF SCREWS

L - LOUVRE
EG - ETCHED GLASS

RAB
DESIGN

INSTALLATION INSTRUCTIONS

Dig hole to appropriate depth allowing for 6" minimum of pea gravel at bottom of rough-in section for drainage.

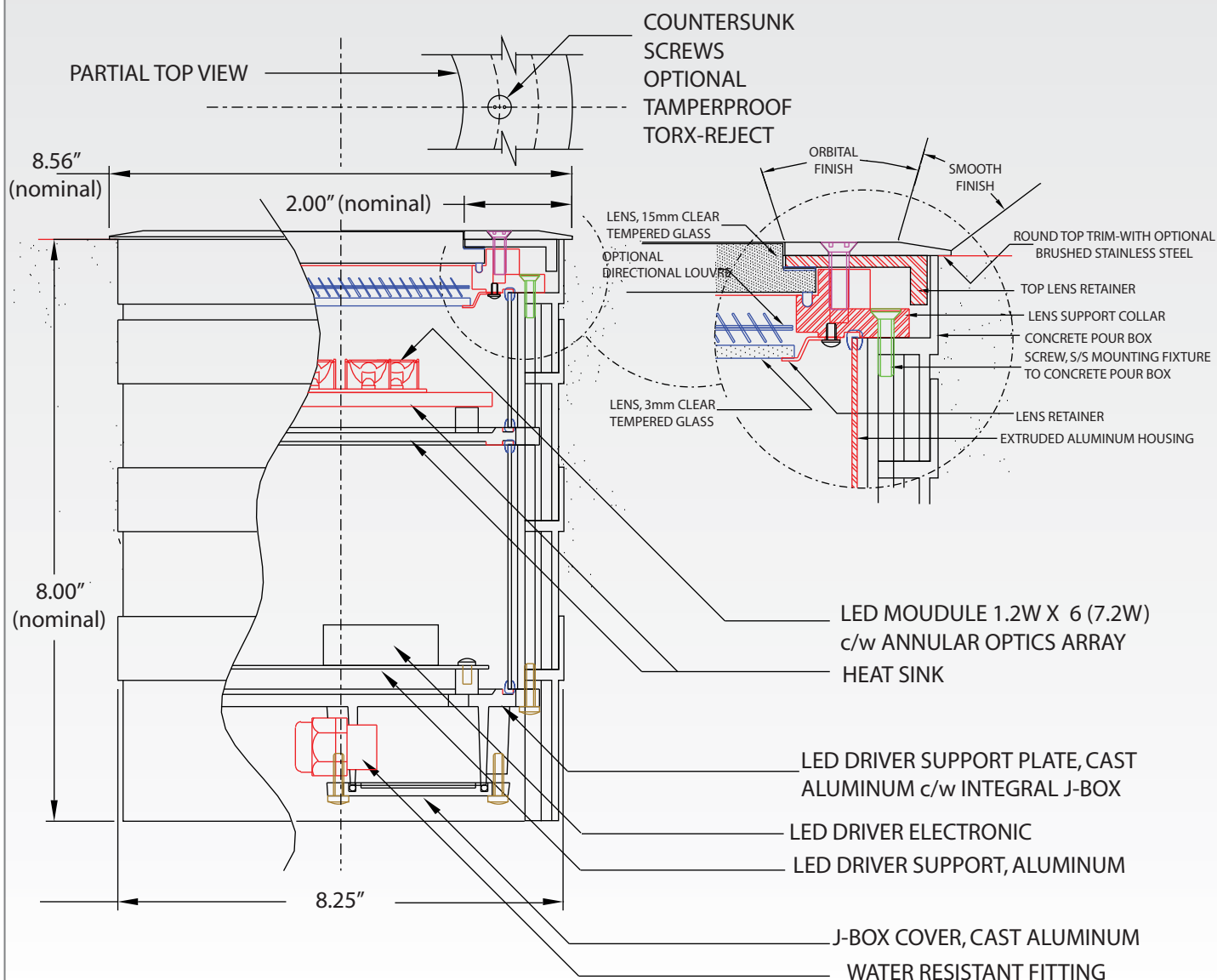
Note : More Pea gravel or additional drainage may be required in locations that have poor soil drainage and/or subject to freezing.

Install the rough-in section flush with the finish grade of earth or concrete only.

CAUTION : WHEN INSTALLING IN ORGANIC MULCH, SURROUND ROUGH-IN SECTION WITH APPROX. SIX INCHES (15cm) OF SAND OR OTHER NON-ORGANIC SUBSTANCE.

CAUTION : TEMPORARY COVER MUST REMAIN IN HOUSING DURING INSTALLATION.

Dimensions



www.rabdesign.ca