



JAGUAR

The Jaguar has a unique and elegant look. With the rounded side feature of this fixture, the EPA rating is drastically reduced. The Jaguar is ideal for almost any parking lot such as shopping malls, schools and hospitals. When used in conjunction with the smaller version for pathway and common area lighting you can maintain the same look throughout a complex. The optics for the Jaguar are segmented, multifaceted.

HOUSING Extruded aluminum min.. 0.100" (2.5mm) Max 0.470" (12mm) using precision clamp joint construction. Housing is painted with a polyester powder coat finish.

REFLECTOR Optics are segmented, multifaceted and rotatable. The Jaguar has four distributions Type II, III IV and type V. The lamp is in the horizontal position. The Jaguar is ideal for "Dark Sky" requirements.

BALLAST Ballasts are mounted on a tool-less entry that is hinged. All ballasts are Tri-Tap 120,277,347 volts. For 208 and 240 CWI options please consult factory. Available wattages for High Pressure Sodium are 150 and 400. For standard Metal Halide the wattages are 250, 350 and 400. For Pulse Start Metal Halide 250, 320, 400 and 450.

LAMP All units come with lamp shipped separately. 400W Metal Halide lamps are MT-28 / ED28.



MOUNTING

POLE MOUNT Extruded aluminum.

WALL MOUNT Extruded aluminum with a cast aluminum bracket.

SOCKET Mogul base 4KV pulse-rated socket with a nickel-plated screw shell and a spring-loaded centre contact.

LENS FRAME Made of extruded aluminum and is self-hinged that opens to 120 degrees. The Lens frame is opened using a single handed tool-less access. The Glass is clear tempered. The glass and frame have a neoprene gasket.

FINISH Polyester powder coat. Standard colours are black, bronze and white. Custom colours are available.

OPTIONS Quartz restrike, house side shield, photocell, modular disconnect and fusing.



www.rabdesign.ca

Catalog Code

JAG

150HPS 250HPS 400HPS 250MH
350MH 400MH 250MHP 320MHP
400MHP 450MHP

LAMP

120 277 347 208CWI 240CWI

VOLTAGE

LG - CLEAR GLASS
FG - FROSTED GLASS

LENS

II - TYPE 2 III - TYPE 3
IV - FORWARD THROW
V - SQUARE

REFLECTOR

PM - POLE MOUNT
WM - WALL MOUNT

MOUNTING

ASA4 - 4" MOUNTING ARM
ASA6 - 6" MOUNTING ARM
ASA12 - 12" MOUNTING ARM

ARM

BLK - BLACK WH - WHITE
BRZ - BRONZE
CC - CUSTOM COLOUR

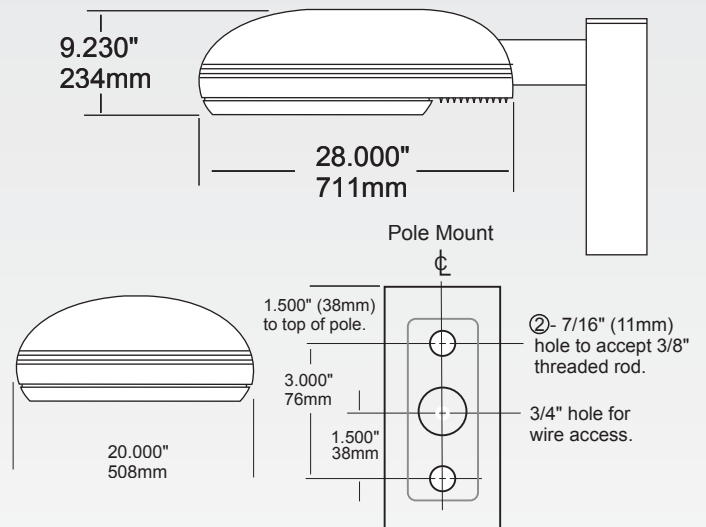
FINISH

PC - PHOTOCELL
QRS - QUARTZ RESTRIKE
F - FUSE
MD - MODULAR DISCONNECT
HSS - HOUSE SIDE SHIELD

OPTIONS

Dimensions

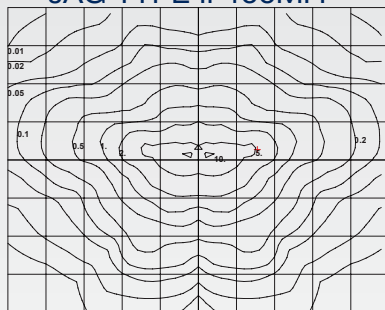
RAB
DESIGN



Effective Projected Area

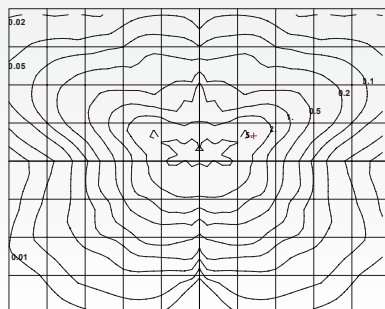
1 Fixture 1.21
2 Fixture 2.42
3 Fixture 2.24
4 Fixture 2.24

JAG TYPE II 400MH



Mounting Height = 24'. Each box is one mounting height.

JAG TYPE III 400MH

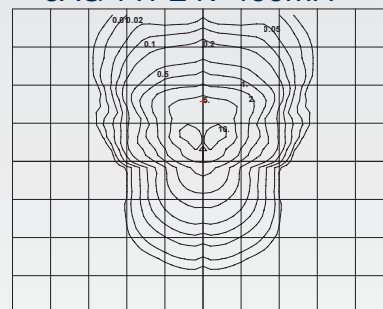


Mounting Height = 24'. Each box is one mounting height.

Mounting
Height

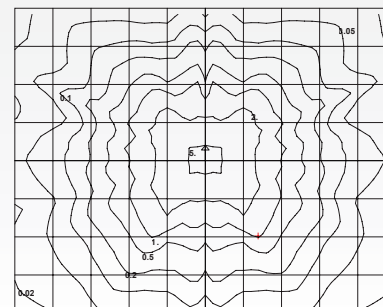
10
15
20
25
30
35
40
45
50

JAG TYPE IV 400MH



Mounting Height = 24'. Each box is one mounting height.

JAG TYPE V 400MH



Mounting Height = 24'. Each box is one mounting height.

Multiplier

5.760
2.560
1.440
0.922
0.640
0.470
0.360
0.284
0.230

www.rabdesign.ca