

The MODx is a highbay LED fixture that is modular in design where multiple housings can be combined together in parallel or a single housing can be constructed for lengths of 2', 4', 6', or 8'.



### APPLICATIONS

**Ideal for a variety of highbay applications such as retail, warehouses, libraries, atriums, and other high ceiling environments.**

<b>Project</b>	
<b>Type</b>	
<b>Date</b>	
<b>Notes</b>	

### SPECIFICATIONS

#### Construction

The MODx is a 22.5" module with an anodized aluminum extrusion custom designed and manufactured in Canada that facilitates optimal heat dissipation. Fixture has a slide-in polycarbonate lens. End plates are made from anodized aluminum and attach to the fixture with 4 machine screws on either side. Linear sections of 2', 4', 6', or 8' can be configured. 2' or 4' modules of 1, 2, 3, or 4 fixtures can be configured in parallel.

#### Mounting

Fixture has been designed for suspended or chain mounting. Pendant mount also available as an option.

#### Operating Temperature

90° C case driver temperature for maximum life. Operating temperature range of -40° C to +35° C.

#### LED Configuration

Each 22.5" fixture has 3 custom designed LED strips with 72 LEDs each that deliver a total lumen output of 10,000 lumens at an efficacy of approximately 87 lumens/watt.

#### Electrical

Total system wattage is 115W per module. Fixture has a high efficiency driver that operates at 120 - 277V. 347V also available as an option.

#### Options

Beam and glare control through optical diffusion lenses. 10kV surge protection, 0 - 10V dimming, back up power supply, pendant mount, 10', 20' aircraft cable with hook, 36" hanger chain, straight plug cord set, twist lock cord set, sensor.

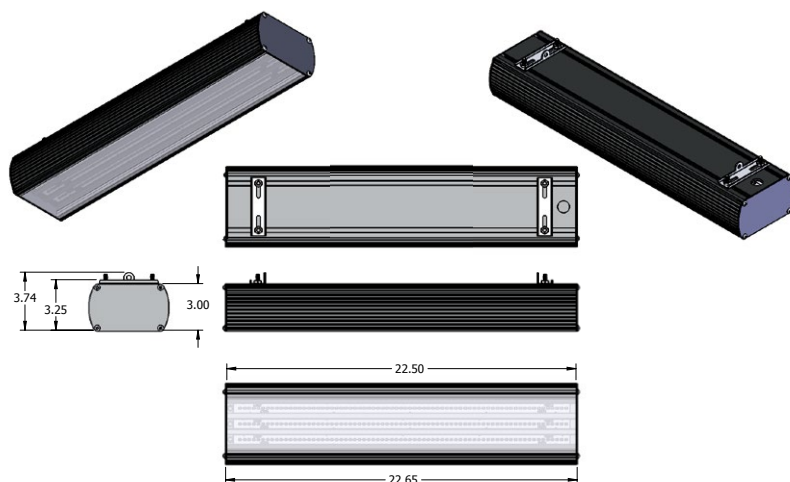
#### Finish

Anodized black finish is standard.

<b>Length of Single Module</b>	<b>22.5"</b>
<b>Fixture Watts</b>	<b>115W</b>
<b>Lumens</b>	<b>10,011</b>
<b>Efficiency</b>	<b>87 lumens per watt</b>

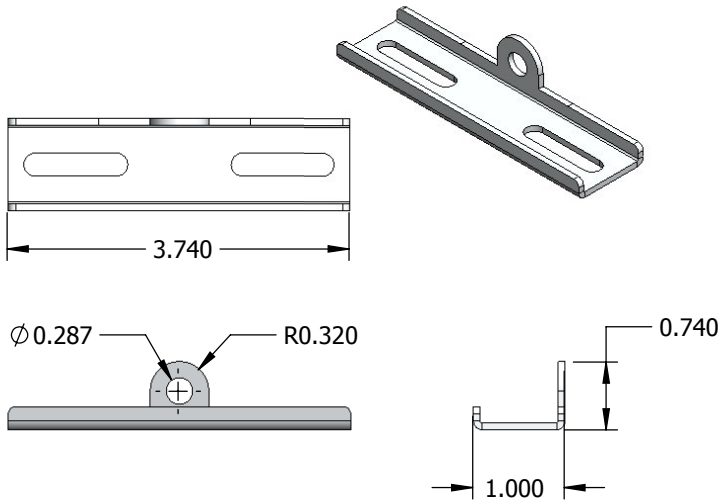
<b>Warranty</b>	<b>5 Years</b>
<b>Colour Temperature</b>	<b>5000K (standard)</b>
<b>Rated Life</b>	<b>100,000 hours</b>

### DIMENSIONS



## MOUNTING OPTIONS

### Wire mount bracket



**Wire Mount Bracket**

## ORDERING GUIDE

MOD <sup>x</sup> 2	LED115 L1 LED115 P2 LED115 P3 LED115 P4	VOLTAGE B - 120 - 277V* C - 347V	COLOUR TEMP 5K - 5000K*	BEAM N - Narrow M - Medium EL - Elliptical CL - Clear Lens*	FINISH BLK - BLACK*	MOUNTING SCM - Suspended Chain Mount* PM - Pendant Mount	OPTIONS SP - 10kV Surge Protection DIM - 0-10V Dimming BPS - Backup power supply AC10 - 10' Aircraft cable AC20 - 20' Aircraft cable HC36 - 36" Hanger chain SP120 - 120V Straight Plug SP277 - 277V Straight Plug TP120 - 120V Twistlock Plug TP277 - 277V Twistlock Plug TP347 - 347V Twistlock Plug Sensor
MOD <sup>x</sup> 4	LED230 L1 LED230 P2 LED230 P3 LED230 P4						
MOD <sup>x</sup> 6	LED345 L1						
MOD <sup>x</sup> 8	LED460 L1						

\* Standard configuration

The number after 'x' denotes module lengths in feet. For ex: MODx2 is a 2 foot section.

The suffix 'L' stands for Linear configuration, the suffix 'P' stands for Parallel configuration.

The number that follows the 'L' or 'P' denotes the number of modules that are combined together.