



OXANE - BY THORN

LED

The Oxane is an LED street light that can be post top or arm mounted. The Oxane unit comes with both mounting systems. The fixture is available with the following LED configurations 14W, 20W, 28W, 56W and 84W. The body is made of die cast aluminum with a powder coat paint finish and the lens is made of clear tempered glass. The Oxane is designed for use in roadway lighting, parking lots and pathways.

HOUSING Die cast aluminum with a grey (RAL9006) powder coated paint finish.

LENS Clear tempered glass.

LED'S Available in 14W (81 lm/W), 20W (77 lm/W), 28W (77lm/W), 56W (71lm/W) and 84W (71 lm/W)

DISTRIBUTION Roadway

DRIVER 120-277 volts driven at 700mA.

MOUNTING Unit can be arm mounted with a 60mm diameter arm or post top mounted with a 60mm or 76mm tenon.



HARDWARE Stainless steel

FINISH Standard finish is grey (RAL9006). Custom colours available please consult factory.

OPTIONS Photocell

RATING IP66

Catalog Code

OXANE

14W, 20W, 28W, 56W, 84W

WATTAGE

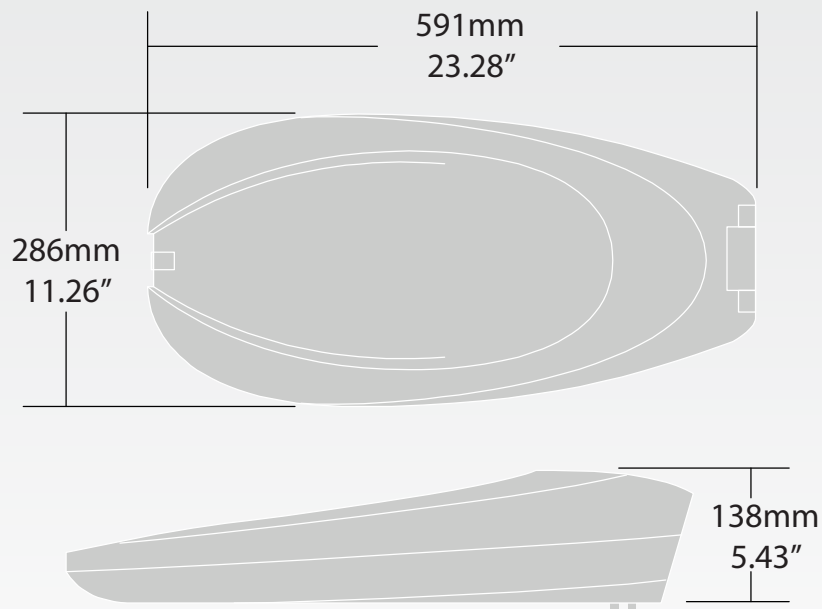
120-277

VOLTAGE

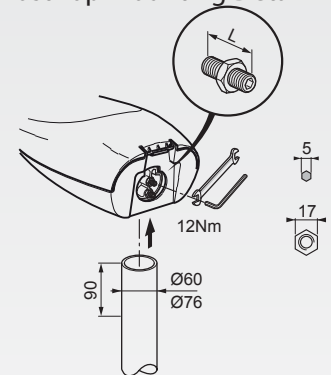
SG - GREY (RAL9006)

FINISH

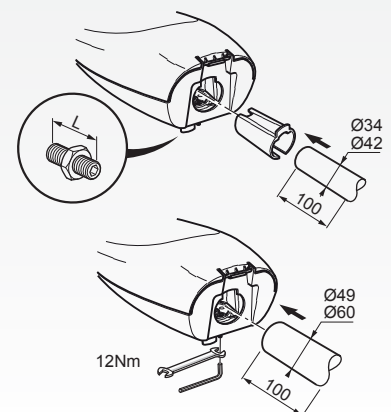
Dimensions



Post Top Mounting Detail



Arm Mounting Detail



www.rabdesign.ca