



BETA LED STEP LIGHT

The Beta step light is great for general low light levels. Ideal for theatres and auditoriums. Also great for use in restaurants and bars where you may want to use colour lighting for accent.

HOUSING Metal housing with one knock out power entry 7/8" KO. Housing has a white polyester powder coat finish and can be used for concrete pours.

DIFFUSER Tempered frosted glass 4mm thick.

FASTENERS Captive and recessed stainless steel.

LEDS Available in 1.2 watt with an integral driver. LEDS are available in WHITE, BLUE, RED and GREEN. They are also available with a narrow, medium or wide beam lens. Drivers are line voltage in at 120 volts.

DRIVER All drivers are integral 120 volts power in.

FACE PLATE Face plate is available in stainless steel, polished or orbital grind, also available aluminum with a polyester powder coat finish.



FINISH Available in stainless steel polished or with an orbital grind finish. For units with a polyester powder coat finish, standard colours are Black or Silver. For custom colours please consult factory.

MOUNTING For concrete pour only. For indoor and outdoor use.

Catalog Code

BETA

1W - WHITE
1R - RED
1B - BLUE
1G - GREEN

LAMP

NARROW, MEDIUM, WIDE

BEAM FOR LEDS ONLY

120V

VOLTAGE

SSO - STAINLESS STEEL WITH
ORBITAL GRIND

SSP - STAINLESS STEEL
POLISHED

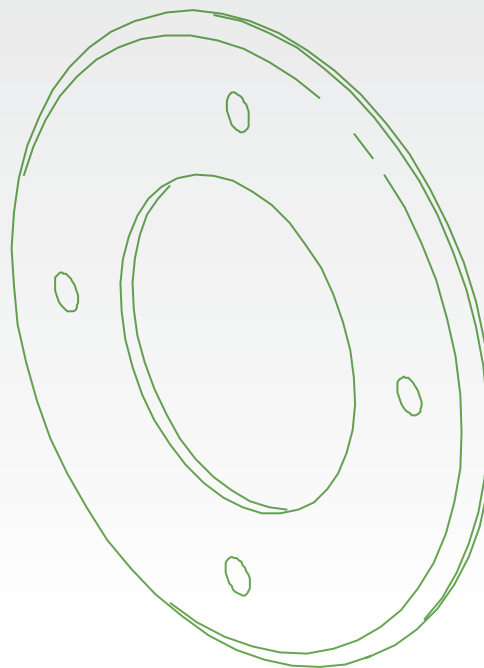
FINISH

SIL - SILVER

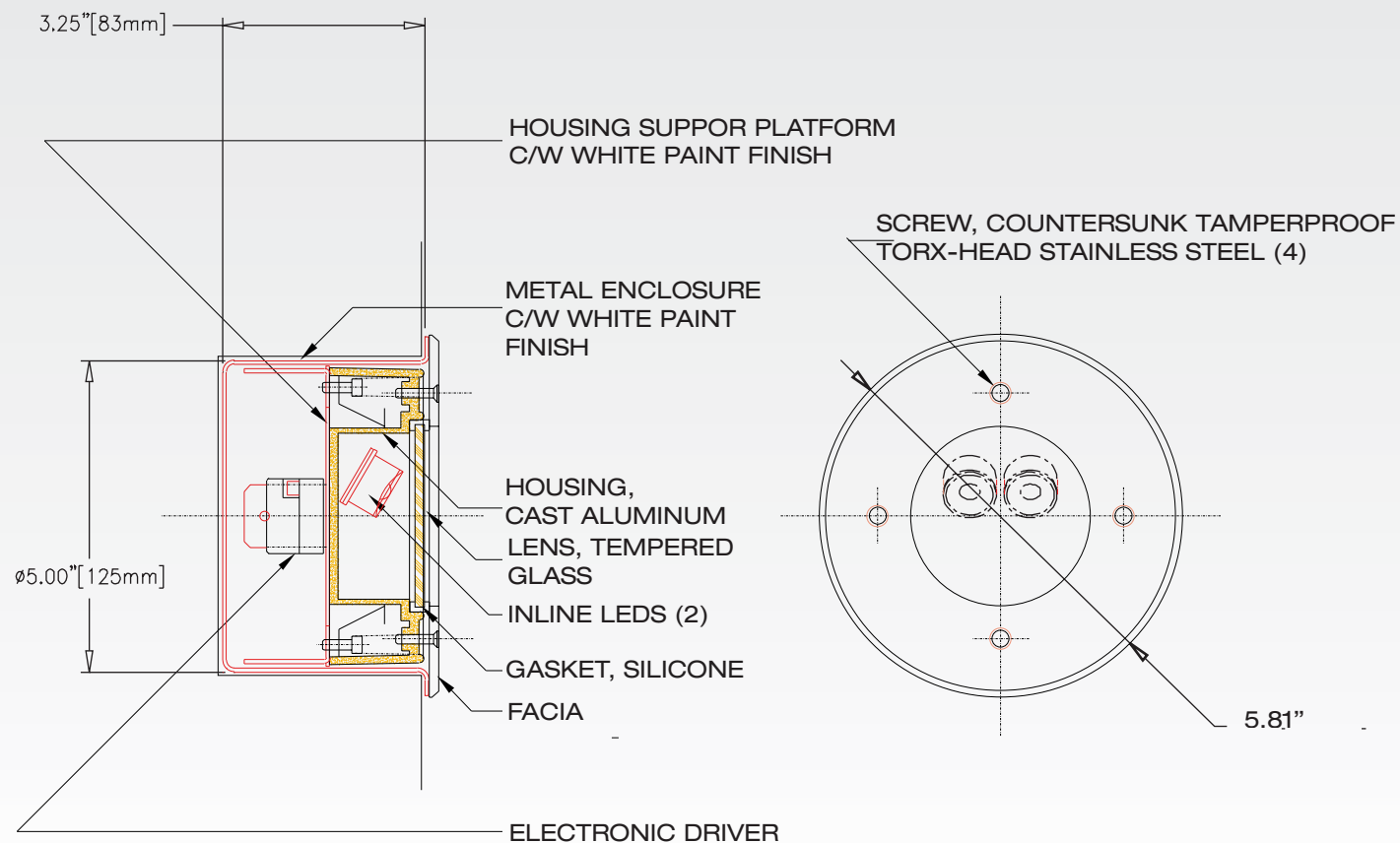
BLK - BLACK

CC - CUSTOM COLOUR

RAB
DESIGN



Dimensions



www.rabdesign.ca