



FL - FACADE LIGHTER

The Facade-Lighter is a highly versatile form of facade and sign lighting available in 4', 6' and 8' lengths. It incorporates all the features which make installation and servicing simple and economical. An aluminum, waterproof ballast housing is supplied with each assembly. .

BALLAST HOUSING Extruded aluminum, waterproof ballast housing incorporates a built-in junction box. The ballast cover has a neoprene gasket and is secured with stainless steel screws. Three 1/2" Conduit entries..

SWIVEL SPLICE BOXES Die-cast aluminum which incorporate the mounting feature, connect the fixture bodies and provide access to the wiring from the outside. With the fixtures in a normal operating position, the plastic covers are easily removed for maintenance.

FIXTURE BODY Extruded aluminum body is equipped with cast aluminum end panels. Within the body is a wiring race-way which contains two conductors, which run the entire length of the body. This allows all the wiring to be brought to a central point between pairs of fixtures at the splice box and then the ballast housing.

BALLAST All ballasts are either 120 or 347V High Output for T12 lamps. Ballast and ballast boxes are remote mount.

LAMP Not included.



ARMS Rigid conduit threaded at each end. Available in 24 or 40 inch lengths.

WALL PLATES Steel wall plates with coupler for holding arm.

MOUNTING The Facade Lighter is designed and approved for mounting from walls in the horizontal position and aiming down only.

FINISH Standard finish is powder coat paint in white. For other colours please consult factory.



www.rabdesign.ca

Catalog Code

FL

ASSEMBLY

FL14HO - 1 X 4' RUN
 FL16HO - 1 X 6' RUN
 FL18HO - 1 X 8' RUN
 FL24HO - 2 X 4' (8 FOOT RUN)
 FL26HO - 2 X 6' (12 FOOT RUN)
 FL28HO - 2 X 8' (16 FOOT RUN)
 FL46HO - 1 X 4' + 1 X 6'
 (10 FOOT RUN)
 FL48HO - 1 X 4' + 1 X 8'
 (12 FOOT RUN)
 FL68HO - 1 X 6' + 1 X 8'
 (14 FOOT RUN)

120 347

VOLTAGE

2 - FL-ARM24 - TWO 24" ARMS
 3 - FL-ARM24 - THREE 24" ARMS
 2 - FL-ARM40 - TWO 40" ARMS
 3 - FL-ARM40 - THREE 40" ARMS

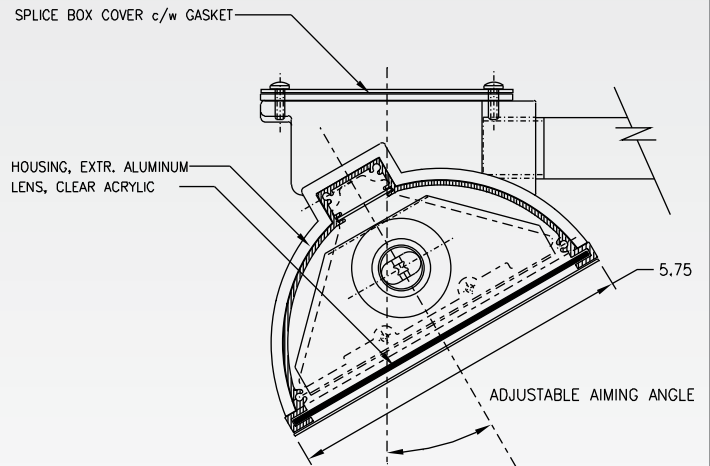
ARMS

2 - FLWALL - 2 WALL PLATES
 3 - FLWALL - 3 WALL PLATES

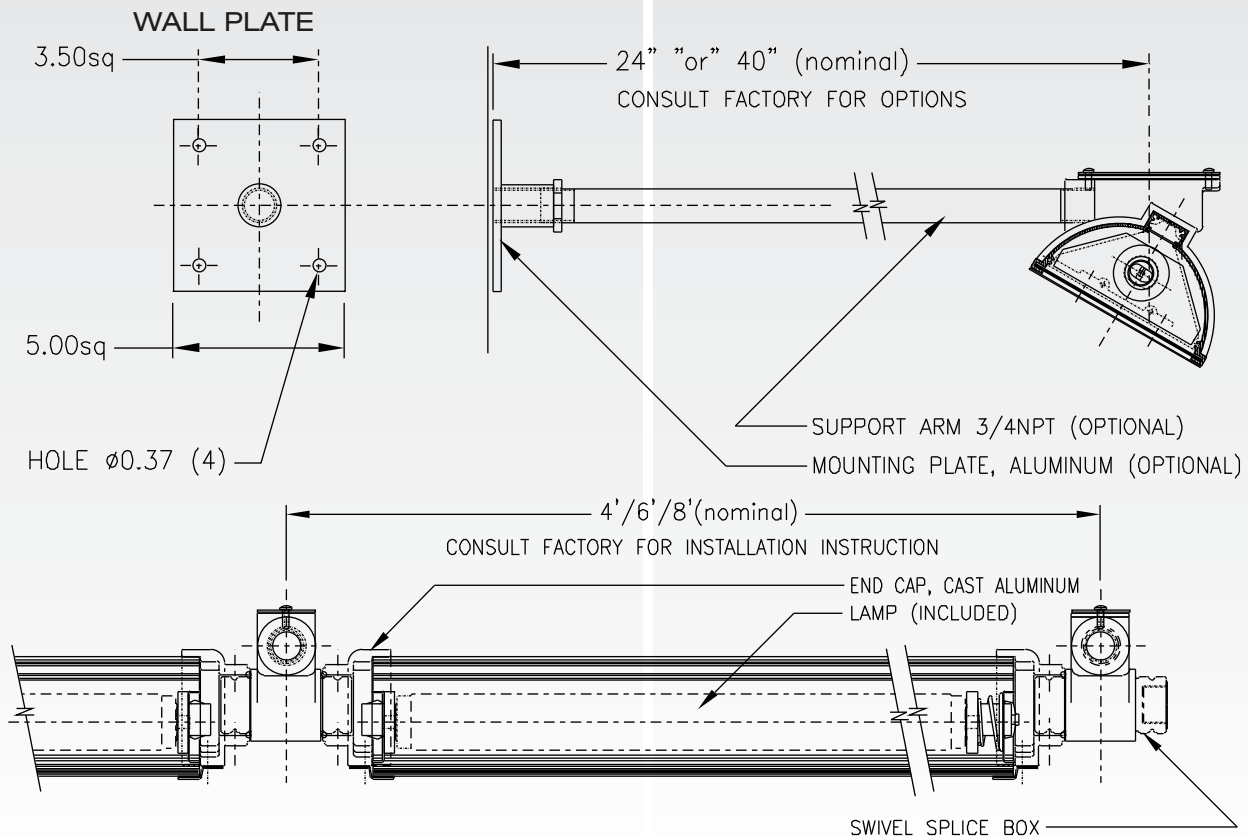
WALL PLATES

PLEASE NOTE FL14, FL16, FL18 REQUIRE 2 ARMS
FL24, FL26, FL28, FL46, FL48, FL68 REQUIRES 3 ARMS
ARMS AND WALL PLATES ARE ORDERED SEPARATELY

RAB
DESIGN



WALL PLATE ARM AND HOUSING



11/11

www.rabdesign.ca