



## P2S WALL MOUNT

*The P2S is an 6.75" wall mounted square unit used for direct illumination on walls or columns.*

*The P2S can be used in either outdoor or indoor applications. The reflector provides a 45 degree cut-off to the lamp. The fixture is ideal for commercial, retail, hospitality and institutional applications.*

**HOUSING** Made of extruded aluminum with a .188 wall thickness and a durable polyester powder coat finish.

**REFLECTOR** Spun aluminum anodized.

**SOCKET** For Metal Halide, the socket is a porcelain 4KV pulse rated with an enclosed screw shell and a spring loaded centre contact. For compact fluorescent, the socket is a thermo plastic with integral clips for lamp retention. For incandescent lamps all sockets medium base 4KV pulse-rated.

### BALLAST

**HID** All ballasts are core and coil Tri-Tap. Available in 50 to 150 watts High Pressure Sodium and 50 to 175 watts in Metal Halide. All ballasts are available in 120, 277 and 347 volts.

**COMPACT FLUORESCENT** All ballasts are electronic and available in 26, 32, and 42 watt. All ballasts are available in 120, 277 and 347 volts.

**MOUNTING BRACKET AND ARM** The mounting plate is made of cast aluminum. The arm from the cylinder to the wall plate is made of extruded aluminum.



**LAMPS** All HID and fluorescent units are shipped complete with lamp.

**HARDWARE** All exterior hardware is made of stainless steel to ensure corrosion-free protection from the elements.

**FINISH** Polyester powder coat finish. Standard colours are black, white and bronze. For custom colours please consult factory

**OPTIONS** Tempered glass lens available as clear or frosted.



## Catalog Code

**P2S**

INC - INCANDESCENT  
26CFL 32CFL 42CFL 50HPS  
70HPS 100HPS 150HPS  
50MH 70MH 100MH 150MH  
175MH

LAMP

120 277 347

VOLTAGE

BZ - BRONZE  
WH - WHITE  
BLK - BLACK  
CC - CUSTOM COLOUR

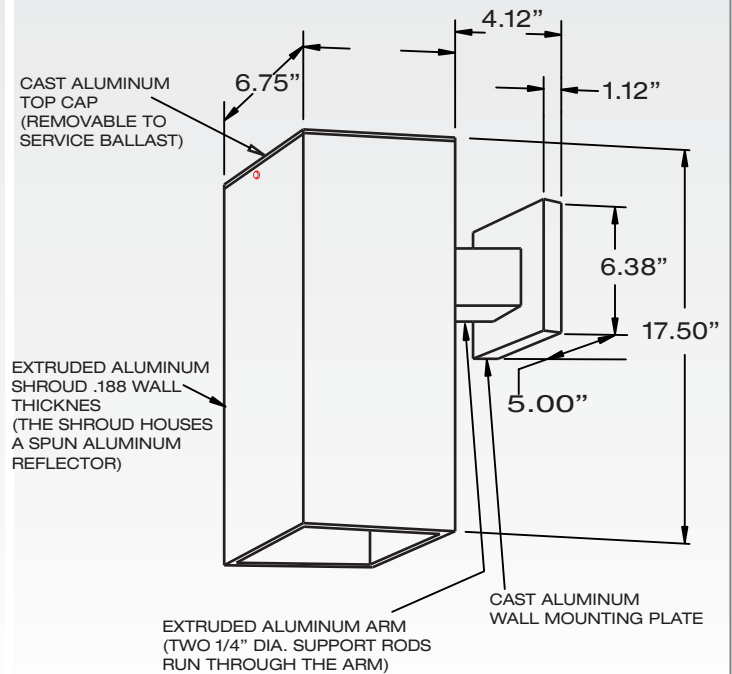
FINISH

GLC - GLASS LENS CLEAR  
GLF - GLASS LENS FROSTED

OPTIONS

**ALL METAL HALIDE LAMPS ARE OPEN  
RATED (PROTECTED LAMP)**

## Dimensions



1208