



## APPLICATIONS

**Ideal for parking lots, pathways and perimeter lighting applications**

## RAL-LED78 Post Top Area Light

The RAL-LED78 is a high efficiency area light with a Type 5 distribution. Intelligently designed, this fixture provides superior lighting performance and significant energy savings over traditional fixtures.

<b>Project</b>	
<b>Type</b>	
<b>Date</b>	
<b>Notes</b>	

## SPECIFICATIONS

### Construction

Precision die cast aluminum housing with prismatic polycarbonate lens. The fixture offers superior heat sinking with continuous air-flow fins around the perimeter of the fixture.

### Optics

Unit has 6 high efficiency LED Chips on Board (COB) that have an efficacy (lumens/watt) of 91. The LEDs have a colour temperature of 5000K. (3000K and 4000K options are also available) The CRI is 76 and the operating temperature range is -40°C to +40°C. LED life is 100,000 hours.

### Beam Distribution

Available in a Type 5 beam distribution.

### Mounting

Standard unit comes with a spider mount assembly that slip fits a 2-3/8" diameter tenon.

### Electrical

Total system wattage is 79W. The standard unit has a high efficiency driver that operates at 120 - 277V. 347V also available.

### Finish

Standard finish is Bronze. Please consult factory for custom colour.

### Options

- Photocell
- 10kV Surge Protector
- 0-10V Dimming

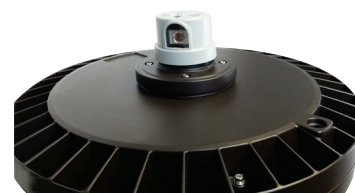
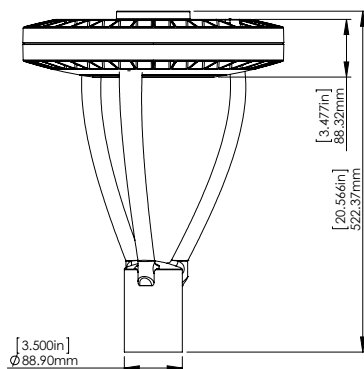
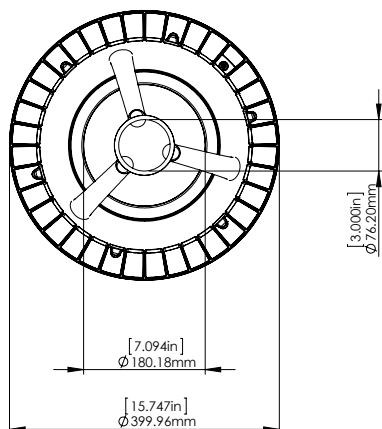
### Warranty

5 years

<b>Equivalent to</b>	<b>250W MH</b>
<b>Beam Distribution</b>	<b>Type 5</b>
<b>Input Watts</b>	<b>79W</b>
<b>Lumens</b>	<b>7204</b>
<b>Efficiency</b>	<b>91 lumens per watt</b>

<b>Operating Temperature</b>	<b>-40°C to +40°C</b>
<b>Certification</b>	<b>cULus, DLC, IP65</b>
<b>Warranty</b>	<b>5 Years</b>
<b>Colour Temperature</b>	<b>5000K (standard) 3000K, 4000K (options)</b>
<b>LED Life</b>	<b>100,000 hours</b>

## DIMENSIONS



Shown with Photocell



## ORDERING GUIDE

<b>RAL</b>	-	<b>LED78</b>	-		-		-	
		VOLTAGE	COLOR TEMP		FINISH		OPTIONS	
		<b>B - 120 - 277V*</b>	<b>5K - 5000K*</b>		<b>BRZ - BRONZE*</b>		<b>SP - Surge Protection</b>	
		<b>A - 120V</b>	<b>4K - 4000K</b>		<b>CC - CUSTOM</b>		<b>DIM-0 - 10V Dimming</b>	
		<b>C - 347V</b>	<b>3K - 3000K</b>				<b>PCA - 120V Photocell**</b>	
							<b>PCF - 277V Photocell**</b>	
							<b>PCC - 347V Photocell**</b>	

\* Standard configuration

\*\* Chosen photocell option must be the same as voltage. Photocell is factory installed.