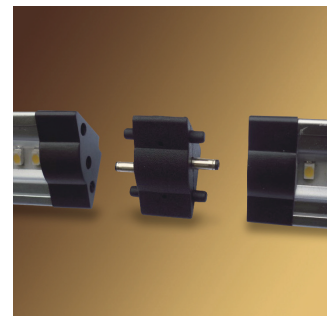




INSTALLS SNUGGLY
INTO CORNER.
EMITS LIGHT AT
A 45° ANGLE.



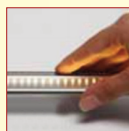
Direct Connector

UCT-LED



EACH UNIT INCLUDES:

- 1 - Fixture
- 1 - Direct Connector
- 1 - Cable Connector
- 2 - Mounting plates



AVAILABLE IN 3 LENGTHS:

300mm (11.81"), 500mm (19.69"), 1000mm (39.37")



NATURAL WHITE (4000K)

or

WARM WHITE (3000K)

* Power Supply and accessories sold separately (see back)

DIMMABLE

DESCRIPTION

Triangular model can be combined with the UC Ultra Slim Linear model and UCP Pucklight.

Link up to 3m (9.84ft) and/or 36 watts on one power source.

Available in Natural White (NW-4000K) or Warm White (WW-3000K)

LEDs have a greater than 50,000 hour life

Easy installation – Hardwire or plug-in power supply required. (see back)

Dimming option available when using a standard TRIAC dimmer and hardwire installation. If using a plug-in power supply, a separate dimmer controller is available.

Voltage 24DC

APPLICATION

Multiple uses include shelving, under cabinets, bookcases, walls and task lighting

Installation and ordering information on reverse.

¹ Available separately.

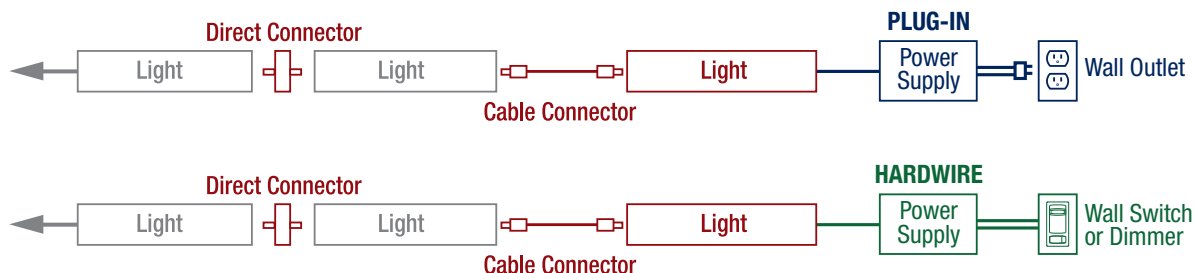


LED

LED Undercabinet Light Triangular



INSTALLATION DIAGRAM

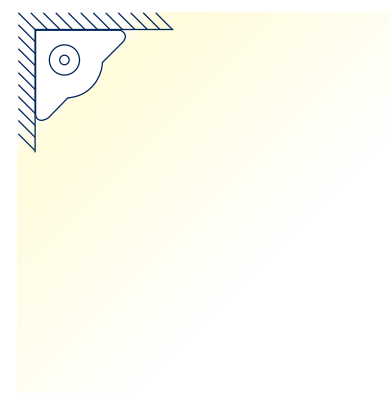


POWER SUPPLY REQUIREMENT

PRODUCT	# PIECES		WATTAGE		TOTAL WATTAGE
UCT-LED-300		x	3 Watts	=	
UCT-LED-500		x	5 Watts	=	
UCT-LED1000		x	11 Watts	=	

*** IMPORTANT ***
EACH SERIES RUN
MUST NOT EXCEED
36WATTS

LIGHT PATTERN



ORDERING INFO

PRODUCT	PROD#	DESCRIPTION	WATT	DIMENSIONS
Natural White Unit * 4000K	50053	UC-LED300-NW	3W	L - 11.8"
	50054	UC-LED500-NW	5W	L- 19.7"
	50055	UC-LED1000-NW	11W	L- 39.4"
Warm White Unit * 3000K	050056	UC-LED300-WW	3W	L - 11.8"
	050057	UC-LED500-WW	5W	L- 19.7"
	050058	UC-LED1000-WW	11W	L- 39.4"
Plug-in Power Supply	50049	UC-6W-POWER SUPPLY 24V	6W	1.8" L X 1" W X 1.2"D
	50051	UC-24W-POWER SUPPLY 24V	24W	3.8" L X 1.2"W X 1.8"D
	50052	UC-36W-POWER SUPPLY 24V	36W	3.8" L X 1.2"W X 1.8"D
Hardwire Power Supply	50102	UC-H/W 40W POWER SUPPLY	40W	1.3" L X 7.6" W X 2.7" D
	50103	UC-H/W 60W POWER SUPPLY	60W	1.3" L X 7.6" W X 2.7" D
	50104	UC-H/W 96W POWER SUPPLY	96W	1.3" L X 7.6" W X 2.7" D
Accessories	050059	UC-CORNER CONNECTOR		1.8" W
	050061	UC-SWITCH CONNECTOR		1.3" L X 1.3" W X 0.3"D
	050074	UC-DIMMER CONTROLLER		3.3" L X 1" W X 0.5" D
	050075	UC-RCPT DC 4 OUTPUT SPLITTER		0.6" L X 2.4" W X 1.3"D
	050076	UC-RCPT DC 8 OUTPUT SPLITTER		0.6" L X 1.7" W X 1.3"D
	050079	UC-CONNECTOR CABLE 6"		6" L
	050080	UC-CONNECTOR CABLE 1M		1M L
	050081	UC-CONNECTOR CABLE 2M		2M L

* EACH UNIT INCLUDES: (1) fixture, (1) direct connector, (1) cable connector, (2) mounting plates and (2) screws

² For use with multiple run applications. Output receptacle (splitter) is required to tie in runs to 100W or 150W transformer

Contact us for more information: info@rdalighting.com

RDA Lighting Inc. 222 Islington Ave., Toronto, ON M8V 3W7
TEL. 416-252-9454 / 800-268-0381 | FAX. 416-252-9664 / 800-668-5517

