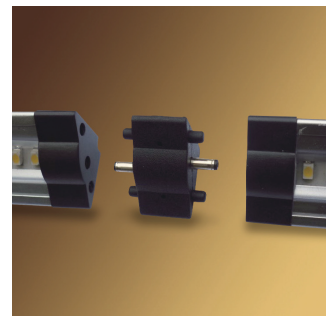
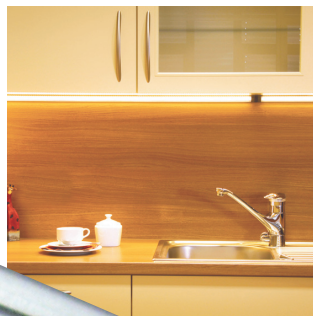




INSTALLS SNUGGLY
INTO CORNER.

EMITS LIGHT AT
A 45° ANGLE.



Direct Connector

UCT-LED



EACH UNIT INCLUDES:

- 1 - Fixture
- 1 - Direct Connector
- 1 - Cable Connector
- 2 - Mounting plates



AVAILABLE IN 3 LENGTHS:

300mm (11.81"), 500mm (19.69"), 1000mm (39.37")



NATURAL WHITE (4000K)

or

WARM WHITE (3000K)

* Power Supply and accessories sold separately (see back)

DIMMABLE

DESCRIPTION

Triangular model can be combined with the UC Ultra Slim Linear model and UCP Pucklight.

Link up to 3m (9.84ft) and/or 36 watts on one power source.

Available in Natural White (NW-4000K) or Warm White (WW-3000K)

LEDs have a greater than 50,000 hour life

Easy installation – Hardwire or plug-in power supply required. (see back)

Dimming option available when using a standard TRIAC dimmer and hardwire installation. If using a plug-in power supply, a separate dimmer controller is available.

Voltage 24DC

APPLICATION

Multiple uses include shelving, under cabinets, bookcases, walls and task lighting

Installation and ordering information on reverse.

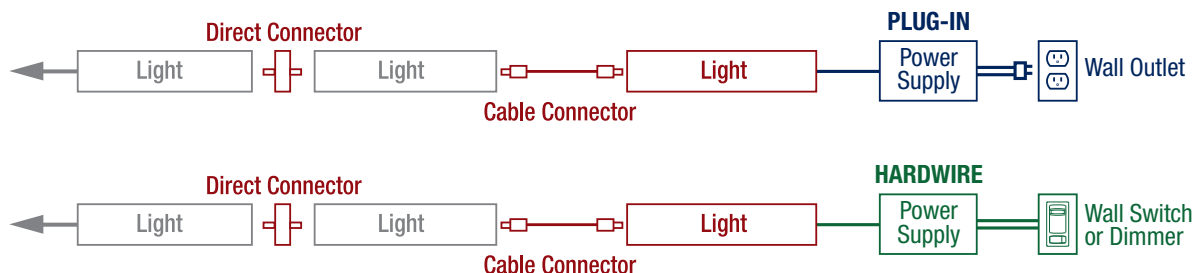
¹ Available separately.

LED

LED Undercabinet Light Triangular



INSTALLATION DIAGRAM

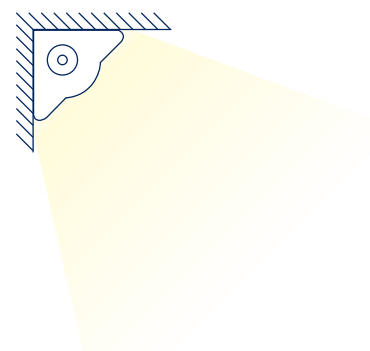


POWER SUPPLY REQUIREMENT

PRODUCT	# PIECES		WATTAGE		TOTAL WATTAGE
UCT-LED-300		x	3 Watts	=	
UCT-LED-500		x	5 Watts	=	
UCT-LED1000		x	11 Watts	=	

*** IMPORTANT ***
EACH SERIES RUN
MUST NOT EXCEED
36WATTS

LIGHT PATTERN



ORDERING INFO

PRODUCT	PROD#	DESCRIPTION	WATT	DIMENSIONS
Natural White Unit * 4000K	88898	UCT-LED300-NW	3W	L-300mm
	88899	UCT-LED500-NW	5W	L-500mm
	88900	UCT-LED1000-NW	11W	L-1000mm
Warm White Unit * 3000K	88901	UCT-LED300-WW	3W	L-300mm
	88902	UCT-LED500-WW	5W	L-500mm
	88903	UCT-LED1000-WW	11W	L-1000mm
Plug-in Power Supply	88864	UC-6W Power Supply	6W	L-45mm x W-25mm x D-31mm
	88865	UC-12W Power Supply	12W	L-68mm x W-25mm x D-50mm
	88866	UC-24W Power Supply	24W	L-96mm x W-30mm x D-45mm
	88867	UC-36W Power Supply	36W	L-96mm x W-30mm x D-45mm
Hardwire Power Supply	88860	UC-40W Hardwire Kit	40W	L-142.8mm x W-54.3mm x D-53.9mm
	88859	UC-H/W 100W ²	100W	
	88857	UC-H/W 150W ²	150W	
Dimmer (for plug-in power supply)	88872	UC-Dimmer Controller		L-85mm x W-25.4mm x D-12.7mm
On/Off Switch	88871	UC-Switch Connector		L-33mm x W-33mm x D-8mm
Output Receptacle (splitter)	88873	UC RCPT DC 4 (Allows you to split the low voltage power into 4 separate runs)		
	88874	UC RCPT DC 8 (Allows you to split the low voltage power into 8 separate runs)		

* EACH UNIT INCLUDES: (1) fixture, (1) direct connector, (1) cable connector, (2) mounting plates and (2) screws

² For use with multiple run applications. Output receptacle (splitter) is required to tie in runs to 100W or 150W transformer

Contact us for more information: info@rdalighting.com

RDA Lighting Inc. 222 Islington Ave., Toronto, ON M8V 3W7
TEL. 416-252-9454 / 800-268-0381 | FAX. 416-252-9664 / 800-668-5517

