

The AWL-LED14W is a multi-purpose fixture that can be used to replace wall packs and floods up to 150 watt metal halide. The head can be aimed straight down for dark sky requirements or aimed out to deliver the light where it is required.

Project	
Type	
Date	
Notes	

### APPLICATIONS

**Ideal for use on building perimeters, loading docks, schools, townhouse complexes and apartment buildings.**

### SPECIFICATIONS

#### Construction

Die cast aluminum housing with tamperproof stainless steel hardware. Clear tempered glass lens with a gasket. There are 4 conduit entries. The unit has a unique hinge assembly for easy installation and a leveling bubble on the back box for proper alignment. Photocell is included.

#### LED configuration

The AWL2-LED50 has two LED Chips On Board (COBs) that deliver 1 651 lumens. The LEDs have a color temperature of 5000K as standard. 3000K and 4000K also available. The LEDs have a CRI of greater than 70 and an operating temperature range of -40°C to +40°C.

#### Adjustable head

The fixture can be aimed 0° - 90° delivering more lumens on the ground where needed.

#### Electrical

Total system wattage of the unit is 14W. The standard unit has a high efficiency driver that operates at 120 - 277V. Optional 10 KV surge suppressor available.

#### Finish

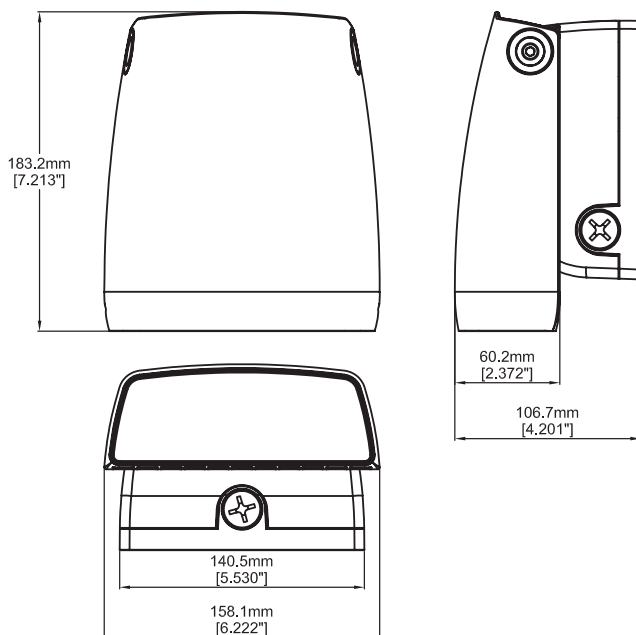
Standard finish is Bronze. Please consult factory for custom color.

#### Accessories

On/Off Sensor and  
0 - 10V Dimmable Smart Sensor.

Equivalent to	up to 70W MH
Input Watts	14W
Lumens	1 651 lumens
Efficiency	119 lumens per watt
Operating Temperature	-40°C - +40°C
Certification	cULus, DLC, IP65 meets LM79, LM80
LED life	100,000 hours
Color Temperature	5000K (standard) 4000K, 3000K (Option)
Warranty	5 Years
Total Harmonic Distortion	20%
Power Factor	0.87

### DIMENSIONS



## INSTALLATION INFORMATION

1. Open fixture, mount back box to junction box



2. Rest fixture onto hinges and connect wires



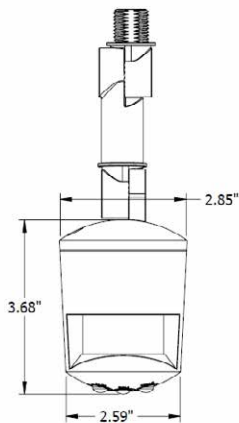
3. Reattach fixture to back box



4. Use set screw to adjust fixture to desired angle

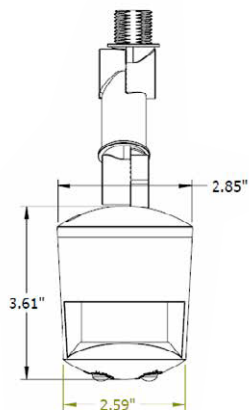


**MS180DIM** 0 - 10V Dimmable Smart Sensor (DMS),  
**MS180S** On/Off sensor (SMS)



### Dimmable Smart Sensor

The MS180DIM is a fully adjustable, dimmable smart sensor that allows you to provide reduced light levels as low as 10% when no motion is detected.



### On/Off Sensor

The MS180S is a fully adjustable motion sensor that can be set for dusk to dawn operation or other custom applications.

Contact us to learn more.

## PHOTOMETRIC DATA

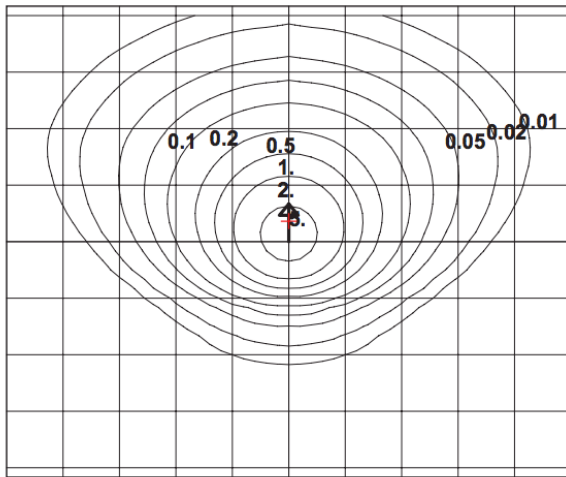
### CATALOG NUMBER: AWL-LED14W-120-PC-BRZ

FILENAME: H115C.IES  
 IESNA: LM-63-2002  
 [TEST] H115C  
 [TESTLAB] Lumentra, Inc.  
 [MORE] 160 Frobisher Drive, Unit 5  
 [MORE] Waterloo, Ontario  
 [MORE] NVLAP LAB CODE 500084-0  
 [ISSUE DATE] 02-04-2014  
 [MANUFAC] RDA LIGHTING INC.  
 [MORE] TORONTO, ONTARIO  
 [LUMCAT] AWL-LED14W-120-PC-BRZ  
 [LUMINAIRE] RAB DESIGN EXTERIOR WALL MOUNTED LED LUMINAIRE  
 [MORE] WITH DIFFUSE ALUMINUM REFLECTOR AND CLEAR OUTER LENS  
 [LAMP] ONE WHITE ARRAY LED. LUMEN OUTPUT = 1243 LMS.  
 [OTHER] ABSOLUTE PHOTOMETRY

### SUMMARY DATA

EFFICIENCY (Total): - 123852.1 %  
 EFFICIENCY (Down / Up): - 123852.1 % / 0.0 %  
 EFFICIENCY (Street / House): 0.0 % / 0.0 %  
 LUMENS/LAMP: -1  
 NO. OF LAMPS: 1  
 LUMINOUS OPENING: P  
 Width: 0.00 (Feet)  
 Length: 0.00  
 Height: 0.00  
 INPUT WATTS: 14.11

### ISO-ILLUMINANCE DIAGRAM

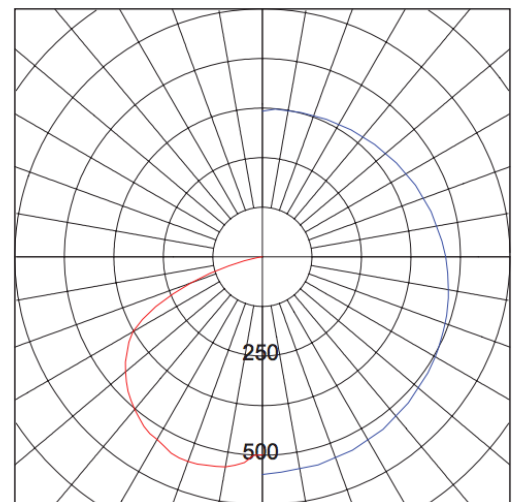


Mounting Height = 8 Feet. Each box represents one mounting height.

Mounting Height	Multiplier
10	0.640
15	0.284
20	0.160
25	0.102
30	0.071
35	0.052
40	0.040
45	0.032
50	0.026

+ = Point of max candela

### PLANE & CONE DIAGRAM



Max plane at H = 0

Max cone at V = 20

MAX CANDLEPOWER: 549

04022014

## ORDERING GUIDE

<b>AWL</b>	-	<b>LED14</b>	-		-		-	
		<b>VOLTAGE</b>		<b>COLOR TEMP</b>		<b>FINISH</b>		<b>OPTIONS</b>
		B - 120 - 277V*		5K - 5000K*		BRZ- BRONZE*		DMS - Dimmable Sensor
		A - 120V		4K - 4000K		CC - CUSTOM		SMS - On/Off Sensor
		F - 277V		3K - 3000K		COLOR		PC - Photocell*
								DIM - 0-10V Dimming*
								10KV Surge Suppressor

\* Standard configuration