

The AWL-LED26 is a wall pack with an adjustable head that can be aimed straight down for dark sky requirements or aimed out to deliver the light where required.



### APPLICATIONS

**Ideal for use on outdoor walls along perimeters of buildings, townhouses, condominiums, schools.**

<b>Project</b>	
<b>Type</b>	
<b>Date</b>	
<b>Notes</b>	

### SPECIFICATIONS

#### Construction

Die cast aluminum housing with tamperproof stainless steel hardware. Clear tempered glass lens with a gasket. There are 4 conduit entries. The unit has a unique hanging hook assembly for easy installation and a leveling bubble on the back box for proper alignment.

#### LED configuration

The AWL-LED-26W has one LED Chip On Board (COB) that delivers minimum of 3,566 lumens. The LEDs have a color temperature of 5000K as standard. 3000K and 4000K also available. The LEDs have a CRI of greater than 70 and an operating temperature range of -40°C to +40°C.

#### Adjustable head

The fixture can be aimed 0° - 90° delivering more lumens on the ground where needed.

#### Electrical

Total system wattage of the unit is 27W. The standard unit has a high efficiency dimmable driver that operates at 120 - 277V. 347V drivers are also available.

#### Finish

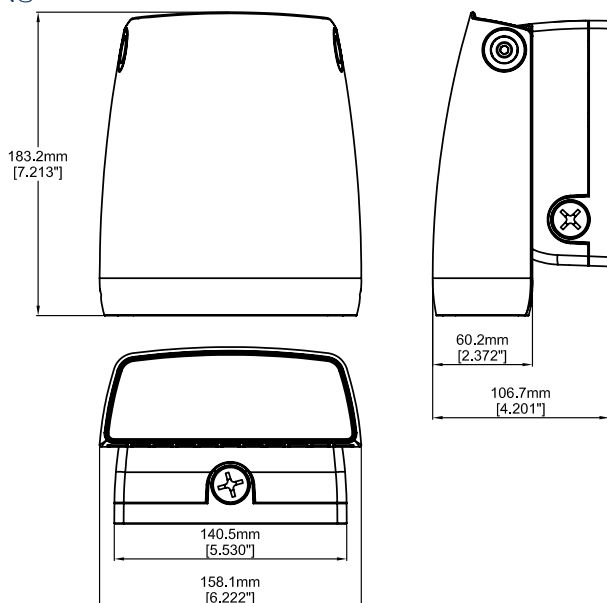
Standard finish is bronze, white and black. Please consult factory for custom color.

#### Accessories

Photocell, On/Off Sensor and 0 - 10V Dimmable Smart Sensor.

<b>Equivalent to</b>	<b>up to 75W MH</b>
<b>Input Watts</b>	<b>27W</b>
<b>Lumens</b>	<b>3566</b>
<b>Efficiency</b>	<b>130 lumens</b>
<b>Operating Temperature</b>	<b>-40°C to +40°C</b>
<b>Certification</b>	<b>cULus, IP65</b>
<b>LED life</b>	<b>100,000 hours</b>
<b>Color Temperature</b>	<b>5000K (standard) 4000K, 3000K (Option)</b>
<b>Warranty</b>	<b>5 Years</b>

### DIMENSIONS

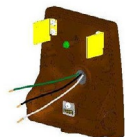


**Shown with Optional Motion Sensor**

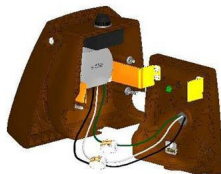


## INSTALLATION INFORMATION

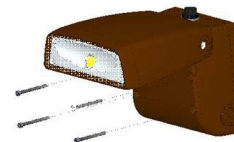
1. Open fixture, mount back box to junction box



2. Rest fixture onto hook and connect wires

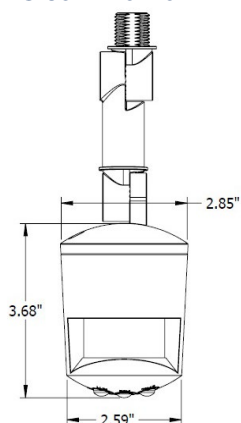


3. Reattach fixture to back box



## ACCESSORIES

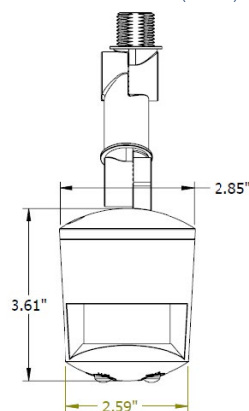
**MS180DIM** 0 - 10V Dimmable Smart Sensor (DMS)



### Dimmable Smart Sensor

The MS180DIM is a fully adjustable, dimmable smart sensor that allows you to provide reduced light levels as low as 10% when no motion is detected.

**MS180S** On/Off Sensor (SMS)



### On/Off Sensor

The MS180S is a fully adjustable motion sensor that can be set for dusk to dawn operation or other custom applications.

### Features: Dimmable Smart Sensor

- Adjustable light levels ensure fixture is fully on when needed and dimmed or off when not.
- Smart dimming reduces electrical load and heat generated by the fixture resulting in increased fixture life.
- Over 92% energy savings compared to traditional wall packs.
- Sensor has an extension arm with two rotatable joints that allow mounting from the bottom conduit access or the side conduit access of fixture.
- Daylight sensor without smart dimming (MS180S) also available in the same design.

Contact us to learn more.

## PHOTOMETRIC DATA

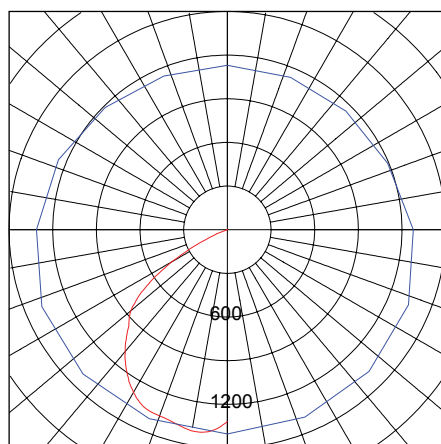
**CATALOG NUMBER: AWL-LED26-A-5K-BRZ**

FILENAME: AWL-LED26-A-5K-BRZ-PC.IES  
IESNA:LM-63-1995  
[TESTLAB] UL Verification Services (Guangzhou) Co., Ltd.  
[TESTDATE] 2014-12-15  
[ISSUEDATE] 2014-12-15

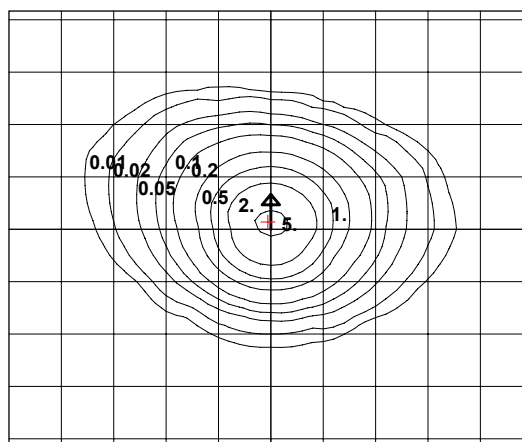
[LUMCAT] AWL-LED26-A-5K-BRZ  
[LUMINAIRE] AWL SERIES  
[LAMPCAT] CLL030-1212A1  
[LAMP]

**SUMMARY DATA**

EFFICIENCY (Total): - 303473.7 %  
EFFICIENCY (Down / Up):- 303319.4 % / - 154.2 %  
EFFICIENCY (Street / House): 0.0 % / 0.0 %  
LUMENS/LAMP: -1  
NO. OF LAMPS: 1  
LUMINOUS OPENING: RECTANGULAR  
Width: 0.03 (Meters)  
Length: 0  
Height: 0.06  
INPUT WATTS: 26.65

**PLANE & CONE DIAGRAM**


MAX CANDLEPOWER: 1404.463

**ISO-ILLUMINANCE DIAGRAM**


Mounting Height	Multiplier
10	2.250
15	1.000
20	0.563
25	0.360
30	0.250
35	0.184
40	0.141
45	0.111
50	0.090

+ = Point of max candela

Mounting Height = 15 Feet. Each box represents one mounting height.

## ORDERING GUIDE

<b>AWL</b>	-	<b>LED26</b>	-		-		-	
				<b>VOLTAGE</b>	<b>COLOR TEMP</b>	<b>FINISH</b>	<b>OPTIONS</b>	
				A - 120V*	5K - 5000K*	BRZ - BRONZE*	DMS - Dimmable Sensor	
				F - 277V	4K - 4000K	BLK - BLACK*	SMS - On/Off Sensor	
				C - 347V	3K - 3000K	WHT - WHITE*	PCA - 120V Photocell**	
						CC - CUSTOM COLOR	PCF - 277V Photocell**	
							PCC - 347V Photocell**	
							10KV Surge Suppressor	

\* Standard configuration

\*\* Chosen photocell option must be the same as voltage