



The FL8-LED300 is an energy efficient LED floodlight that replaces a 1000W Metal Halide fixture. The fixture is available as a slip fit and yoke mount

### APPLICATIONS

**Ideal for floodlighting/area lighting in industrial applications.**

Project	
Type	
Date	
Notes	

### SPECIFICATIONS

#### Construction

Die cast aluminum housing with polycarbonate lens. The fixture has air flow fins at the back for heat dissipation. The FL8- LED300 is suitable for outdoor locations and is rated IP65

#### LED configuration

Fixture has built in wide beam optics ideal for area lighting applications. LEDs have a color temperature of 4000K and a CRI of greater than 80.

#### Electrical

Total system wattage of the unit is 300W. The standard unit has a high efficiency driver that operates at 120 - 277V. 347V available as an option. Fixture has a Power factor of 0.95.

#### Mounting

The fixture is available as a yoke mount or a 2 3/8" slip fit mount.

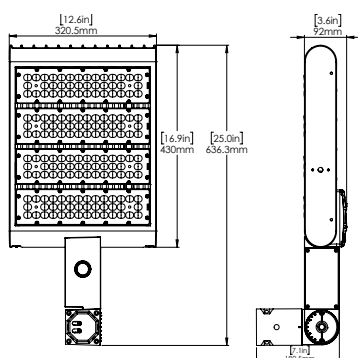
#### Finish

Standard finish is Bronze.

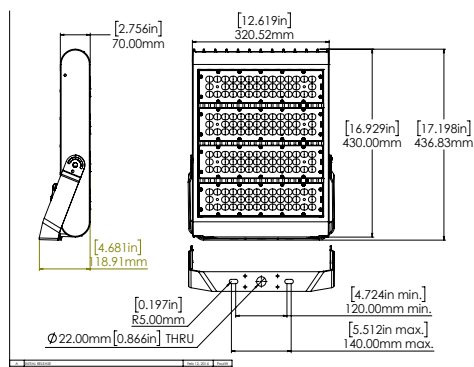
<b>Watts</b>	<b>304W</b>
<b>Voltage</b>	<b>120-277V(standard), 347V (option)</b>
<b>Lumens</b>	<b>30,857</b>
<b>Efficacy</b>	<b>101 lumens per watt</b>

<b>Operating Temperature</b>	<b>-40°C to +40°C</b>
<b>Certification</b>	<b>cULus, IP65, DLC</b>
<b>LED Life</b>	<b>100,000 hours</b>
<b>Color Temperature</b>	<b>4,000K</b>
<b>Warranty</b>	<b>5 years</b>
<b>Weight</b>	<b>25lbs</b>
<b>Power Factor</b>	<b>0.95</b>
<b>Total Harmonic Distortion</b>	<b>7.88%</b>
<b>CRI</b>	<b>&gt;80</b>

### DIMENSIONS



SLIP FIT MOUNT



YOKE MOUNT



## ORDERING GUIDE

FL8	-	LED300	-		-	4K	-	BRZ	-	
		VOLTAGE		COLOR TEMP		FINISH		MOUNTING		
		B - 120 - 277V*		4K - 4000K*		BRZ - BRONZE*		SF - SLIP FIT		
		C - 347V						YK - YOKE		

\* Standard configuration