



SQ-LED80

Square Canopy Light

SPECIFICATIONS*

Watts	80
Lumens	9548
Efficacy	119
Replaces Up To	250W MH
Color Temp	4,000K
Operating Temp	-40°C to +40°C
Voltage	120-277, 480
LED Life	100,000 hours
Housing Material	Die Cast Aluminum
Lens Material	Polycarbonate
Power Factor	0.9
Total Harmonic Distortion	12.32%



DESCRIPTION

Rugged, high efficiency, easy to install canopy fixture that can be surface or pendant mounted. 0 - 10V dimming is standard with High Frequency Motion Sensor available as an option.

APPLICATIONS



Entrances



Canopies



Garages



Stairwells

FEATURES

- IP65 rated canopy fixture for wet locations.
- Fixture has polycarbonate diffuser lens to eliminate glare.
- Fixture has 4 x 1/2" NPT conduit entries on each side.
- Pendant mount option available with 3/4" NPT opening at the back of the fixture.

*The above specs apply to the standard product configuration - SQ-LED80, 120-277V, 5K. For spec information on other product configurations please see page 2. **NOTE:** Not all of our product configurations are qualified on the DLC QPL. To view all of our DLC qualified products please visit the DLC qualified products list at www.designlights.org/qpl.

OTHER MODEL SPECIFICATIONS

MODEL DESCRIPTION	VOLTAGE (V)	INPUT POWER (W)	LIGHT OUTPUT	EFFICACY (Lm/W)	THD	PF
SQ-LED80-B-4K-XXX-DIM	120-277	79.63	9548.4	119.91	12.32	0.9
SQ-LED80-L-4K-XXX-DIM	480	73.51	8909	121.19	12.02	0.95

LEGEND

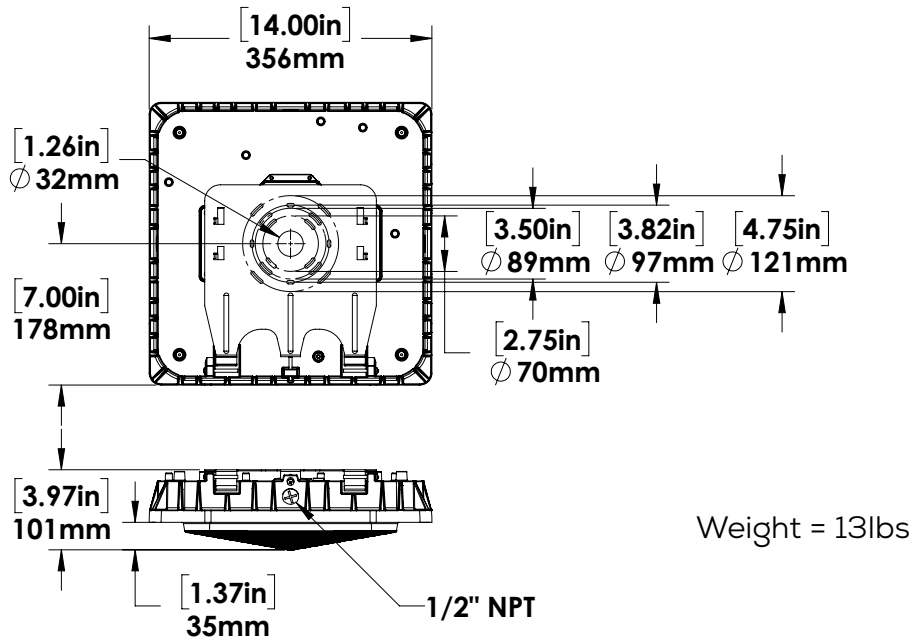
B - 120V-277V, L - 480V

4K - 4000K

XXX - HOUSING FINISH

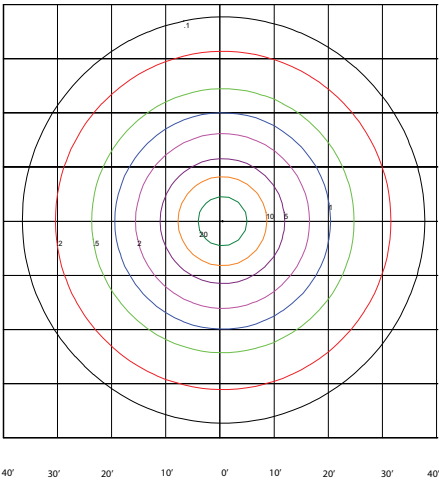
DIM - DIMMABLE

DIMENSIONS



PHOTOMETRICS

SQ-LED80-B-4K-DIM
MOUNTED AT 10 FEET



PHOTOMETRIC FILENAME : SQ-LED80-B-4K-DIM-BRZ.IES

COEFFICIENTS OF UTILIZATION - ZONAL CAVITY METHOD

Effective Floor Cavity Reflectance 0.20

RC	80				70				50				30				10				0
RW	70	50	30	10	70	50	30	10	50	30	10		50	30	10		50	30	10		0
0	119	119	119	119	116	116	116	116	111	111	111	111	106	106	106	106	102	102	102	100	
1	108	103	99	95	105	101	97	93	96	93	90		92	90	87		89	87	85	82	
2	98	90	83	77	96	88	81	76	84	79	74		81	76	72		78	74	71	68	
3	90	79	70	64	87	77	69	63	74	67	62		71	66	61		69	64	60	58	
4	82	70	61	54	80	68	60	54	66	59	53		63	57	52		61	56	51	49	
5	75	62	53	46	73	61	53	46	59	51	46		57	50	45		55	49	45	42	
6	70	56	47	41	68	55	47	40	53	46	40		52	45	40		50	44	39	37	
7	65	51	42	36	63	50	42	36	49	41	35		47	40	35		46	39	35	33	
8	60	46	38	32	58	46	38	32	44	37	32		43	36	31		42	36	31	29	
9	56	43	34	29	55	42	34	29	41	34	28		40	33	28		39	33	28	26	
10	53	39	31	26	51	39	31	26	38	31	26		37	30	26		36	30	26	24	

ZONAL LUMEN SUMMARY

Zone	Lumens	%Lamp	%Fixt
0-20	1207.8	N.A.	12.80
0-30	2556.53	N.A.	27.10
0-40	4164.75	N.A.	44.10
0-60	7305.69	N.A.	77.40
0-80	9113.09	N.A.	96.50
0-90	9407.46	N.A.	99.60
10-90	9093.78	N.A.	96.30
20-40	2956.95	N.A.	31.30
20-50	4612.97	N.A.	48.90
40-70	4268.12	N.A.	45.20
60-80	1807.39	N.A.	19.10
70-80	680.20	N.A.	7.20
80-90	294.39	N.A.	3.10
90-110	19.38	N.A.	0.20
90-120	21.70	N.A.	0.20
90-130	24.56	N.A.	0.30
90-150	29.97	N.A.	0.30
90-180	33.98	N.A.	0.40
110-180	14.61	N.A.	0.20
0-180	9441.45	N.A.	100.00

Total Luminaire Efficiency = N.A.%

ZONAL LUMEN SUMMARY

Zone	Lumens
0-10	313.69
10-20	894.11
20-30	1348.74
30-40	1608.22
40-50	1656.02
50-60	1484.92
60-70	1127.19
70-80	680.20
80-90	294.39
90-100	16.86
100-110	2.52
110-120	2.32
120-130	2.85
130-140	2.86
140-150	2.56
150-160	2.08
160-170	1.37
170-180	0.56

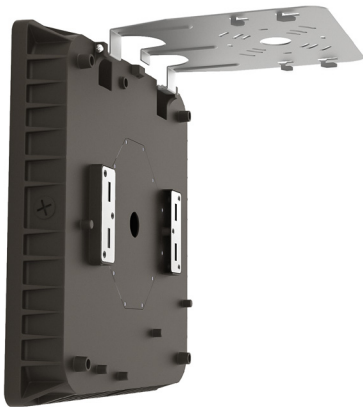
[LUMINAIRE] SQ-LED80-B-4K-DIM-BRZ					
[LUMCAT] SQ-LED80-B-4K-DIM-BRZ					
[OTHER]					
[OTHER]	Gamma(deg)	Fz(lm)	Ft(lm)	%Lum	%Lamp
[OTHER]	0-10	313.69	313.69	3.32	3.32
[OTHER]	10-20	894.11	1207.80	12.79	12.79
[OTHER]	20-30	1348.74	2556.53	27.08	27.08
[OTHER]	30-40	1608.22	4164.75	44.11	44.11
[OTHER]	40-50	1656.02	5820.77	61.65	61.65
[OTHER]	50-60	1484.92	7305.69	77.38	77.38
[OTHER]	60-70	1127.19	8432.88	89.32	89.32
[OTHER]	70-80	680.21	9113.09	96.52	96.52
[OTHER]	80-90	294.39	9407.48	99.64	99.64
[OTHER]	90-100	16.86	9424.33	99.82	99.82
[OTHER]	100-110	2.52	9426.86	99.85	99.85
[OTHER]	110-120	2.32	9429.18	99.87	99.87
[OTHER]	120-130	2.85	9432.03	99.90	99.90
[OTHER]	130-140	2.86	9434.90	99.93	99.93
[OTHER]	140-150	2.56	9437.45	99.96	99.96
[OTHER]	150-160	2.08	9439.53	99.98	99.98
[OTHER]	160-170	1.37	9440.90	99.99	99.99
[OTHER]	170-180	0.56	9441.46	100.00	100.00
[OTHER]					

MOUNTING OPTIONS



Pendant Mount
Optional

INSTALLATION



Easy Hanging Hinge
Allows for one man installation.

ORDERING GUIDE

SQ						
WATTS	VOLTAGE	Color TEMP.	FINISH	DRIVER	OPTIONS	
LED80	B - 120 - 277V*	4K - 4000K*	BRZ - BRONZE*	DIM - DIM-0-10V DIMMING*	DMS - DIMMING MOTION SENSOR	
	L - 480V				PMxx - PENDANT MOUNT	

*Standard Configuration.

(xx = Specify Pendant Pipe Length)