

The WRD8 is an architectural, specification grade down light with advanced optics available in three sizes and custom color finishes.



APPLICATIONS

Ideal for perimeter lighting in retail buildings, atriums, condominiums and other architectural properties.

Project	
Type	
Date	
Notes	

SPECIFICATIONS

Construction

WRD8 has an extruded aluminum housing with a powder coat paint finish. The fixture has a clear tempered glass lens which is held in place with a gasket and three stainless steel screws making it approved for wet locations.

Mounting

The fixture can be mounted directly on to the wall with a recessed junction box and has an easy mounting system. The galvanized steel plate is attached to the wall with 4 screws. The fixture then slides under the two pins and is secured by the two set screws at the bottom.

Optics

The fixture has a standard color temperature of 5000K, 4000K and 3000K are available as options. The fixture also has optional diffusion lenses for narrow, medium or wide beams.

Electrical

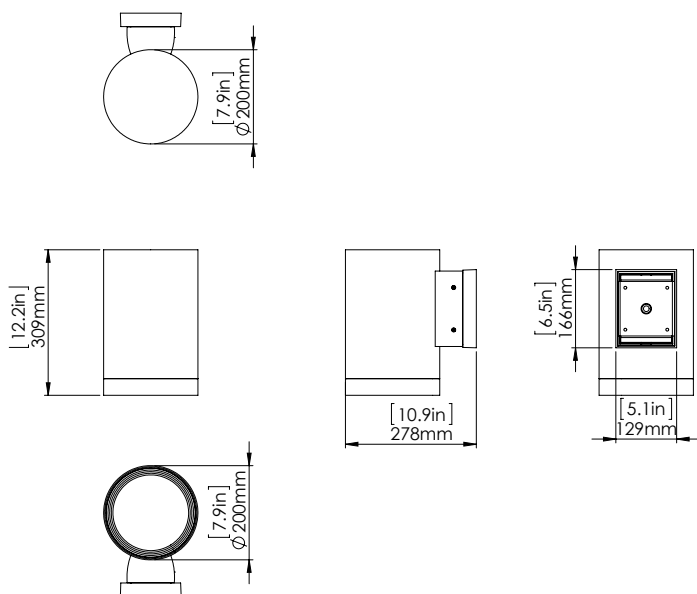
The standard unit has a high efficiency driver that operates at 120-277V.

Finish

Standard finish is black, bronze and white. Custom colors available.

Diameter	8"
Watts	39W
Lumens	4,196
Efficacy	109 lumens/watt
Operating Temp	-40°C to +40°C
LED Life	100,000 hours
Color Temp.	5000K (standard), 4000K, 3000K (option)
Warranty	5 Years
Certification	Approved to uL/CSA standards

DIMENSIONS

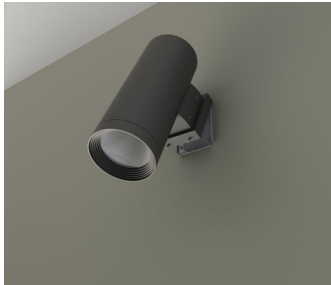


EASY INSTALLATION

Step 1: Attach steel plate on the wall with 4 screws



Step 2: Slide fixture under the two pins till it locks in



Step 3: Secure with 2 set screws on the bottom



ORDERING GUIDE

WRD8	-	LED38	-		-		-	
				VOLTAGE	COLOR TEMP.	OPTICS	FINISH	
				B - 120 - 277V	3K - 3000K 4K - 4000K 5K - 5000K	N - NARROW M - MEDIUM W - WIDE	WH - WHITE BLK - BLACK BRZ - BRONZE CC - CUSTOM COLOR	

* Standard configuration