



S5 FLOOD

The S5 can be used for wall or pole mounting. Ideal for commercial, industrial perimeter lighting or for parking areas.

HOUSING Die-cast aluminum with a polyester powder coat finish.

FRAME ASSEMBLY The frame is die-cast aluminum and is hinged on the bottom. The frame has a continuous gasket around the frame and the glass. The glass is tempered high impact and thermal shock-resistant.

REFLECTOR Formed-aluminum with a specular finish optimizes beam efficiency and control.

BALLAST All ballasts are Tri-Tap 120, 277, 347 volts. For 208CWI, 240CWI and 600V options please consult factory. Available wattages are 1000 watt High Pressure Sodium and 1000 watt Metal Halide. Also available are 750 and 1000 watt Pulse Start.

LAMP Mogul base. All units come complete with lamp. If coated lamp is required please state type.

MOUNTING Die-cast aluminum knuckle slip fits a 2 3/8" tenon, steel yoke mount or arm mount.



FINISH Polyester powder coat finish. Standard colours is bronze.

SOCKET Mogul base 4KV pulse-rated socket with a nickel-plated screw shell and a spring-loaded centre contact.

OPTIONS Wire guard, visor, polycarbonate shield, photocell and fusing.

Catalog Code

S5

1000HPS 1000MH
750MHP* 1000MHP*

LAMP

120 277 347
208CW** 240CW** 600**

VOLTAGE

BRZ -BRONZE

FINISH

KM - KNUCKLE MOUNT
YM - YOKE MOUNT
PM - ARM MOUNT

MOUNTING

PC - PHOTOCELL**
SF - SINGLE FUSE**
VS - VISOR
WG - WIRE GUARD
PS - POLYCARBONATE
SHIELD

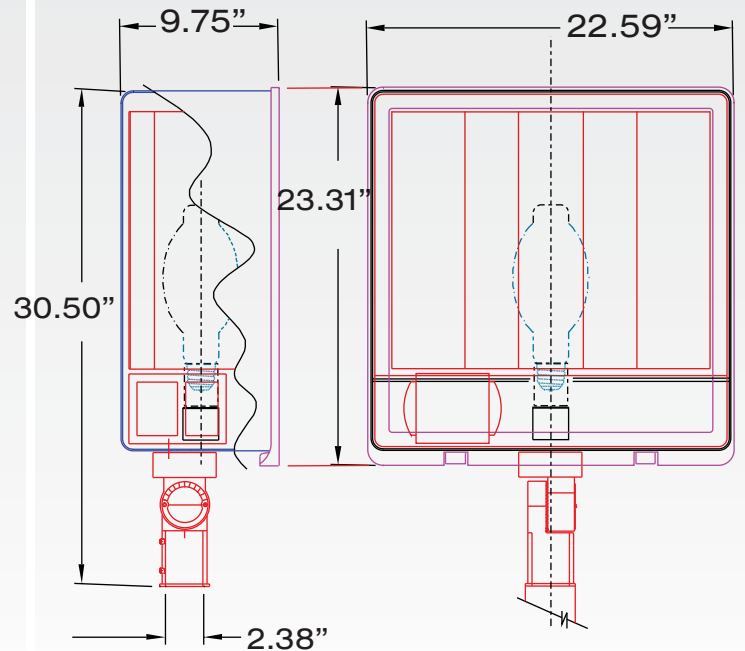
OPTIONS

* PULSE START METAL HALIDE

** NOT AVAILABLE ON ALL WATTAGES

Dimensions

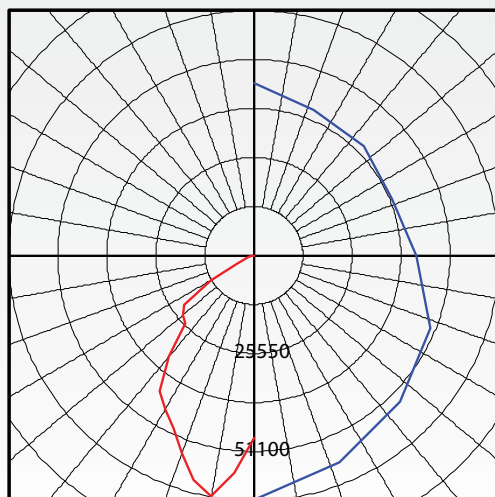
RAB
DESIGN



SUMMARY DATA

EFFICIENCY (Total):	79.9 %
EFFICIENCY (Down / Up):	79.9 % / 0.0 %
EFFICIENCY (Street / House):	0.0 % / 0.0 %
LUMENS/LAMP:	115000
NO. OF LAMPS:	1
LUMINOUS OPENING:	RECTANGULAR
Width:	0.56 (Meters)
Length:	0.73
Height:	0.24
INPUT WATTS:	1100

PLANE & CONE DIAGRAM

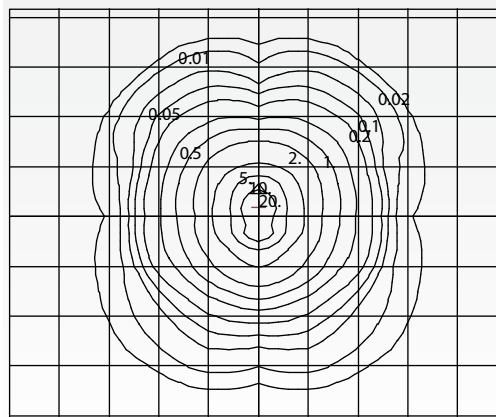


Max plane at H = 0
Max cone at V = 10
MAX CANDLEPOWER: 63752.9

CATALOG NUMBER: S51000MH
FILENAME: S51000MH.IES
CANDELA TABLE

Vertical Angle	Horizontal Angles									
	0	22.5	45	67.5	90	112.5	135	157.5	180	
0	47527	47527	47527	47527	47527	47527	47527	47527	47527	47527
5	56814	55671	53595	47166	42418	41779	42362	42813	43326	43326
10	63753	58246	53947	49686	42461	38898	40433	41120	44856	44856
15	60453	55561	55683	49366	40474	38374	39904	45871	56368	56368
20	54776	49868	50408	43765	33691	33665	44651	53245	61876	61876
25	49715	44371	42107	32591	27128	28337	41767	48620	52053	52053
30	46379	42333	32291	24789	21800	24269	30735	34763	32798	32798
35	43087	40148	28293	22270	20161	21016	23468	23569	24740	24740
40	34393	34785	26547	22521	19826	21090	20118	20421	25531	25531
45	25226	26856	25587	20363	19882	19725	16704	21076	23217	23217
50	24332	24096	23222	17569	13920	16221	14219	19080	20268	20268
55	22278	21130	19881	14934	11939	12227	14123	14683	16077	16077
60	12771	16528	16044	12834	11005	10702	10845	8868	10294	10294
65	5024	9842	11842	8061	6290	7980	4663	4523	3704	3704
70	1474	4500	5168	1249	571	990	1699	2381	1316	1316
75	506	926	831	723	517	717	963	817	374	374
80	131	273	492	709	561	529	331	305	114	114
85	26	26	74	121	118	73	48	27	27	27
90	0	0	0	0	0	0	0	0	0	0

ISO-ILLUMINANCE DIAGRAM



Mounting Height	Multiplier
10	16.000
15	7.111
20	4.000
25	2.560
30	1.778
35	1.306
40	1.000
45	0.790
50	0.640

Mounting Height = 40 Feet. Each box represents one mounting height.

0109

www.rabdesign.ca