



## SPQ - 4" SQUARE ALUMINUM POLE

*The SPQ pole is available from 8 feet up to 16 feet in height. This square pole is for use with single and multiple globe assemblies, with the option of a post line ballast up to 150 watt HPS or 100 watt MH ballast. The following fixtures can be used with the SPQ pole, Gamma, Torchlight, Small Colonial, Medium Colonial, S7, Victoria, Windsor, Small Jaguar, Waterford and the Coachman. Ideal for use in small courtyards, condominiums and apartment buildings.*

**POLE** Extruded aluminum, with a 4" square with .180 wall thickness. Pole has a powder coat paint finish.

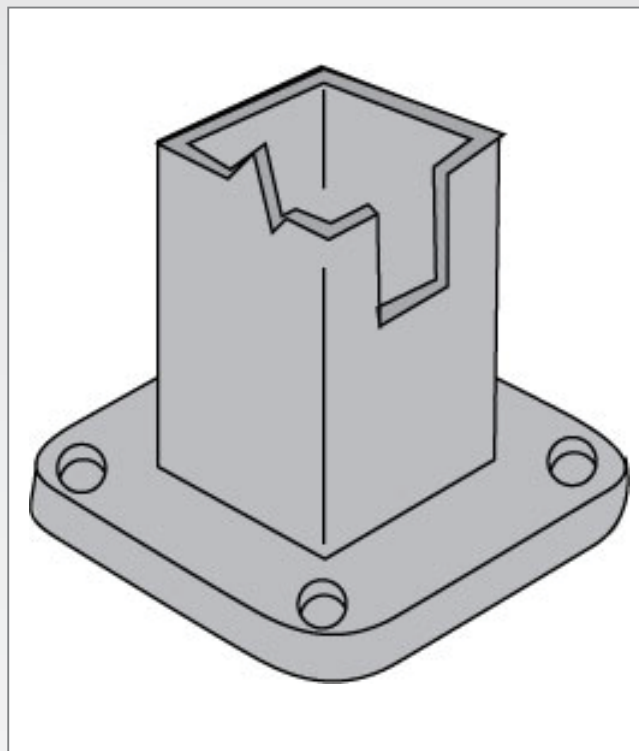
**BASE** Cast aluminum base welded to the pole. Base is held in place with four 5/8" diameter anchor bolts that are to be set into a concrete pad.

**ANCHOR BOLTS** Four galvanized, 5/8" x 15" diameter, twelve inch long anchor bolts complete with nuts and washers.

**BASE COVER** Spun aluminum cover with a powder coat paint finish.

**OPTIONS** Hand hole with cover, 3" tenon, drillings for arm mounted fixtures.

**FINISH** Standard colours are black and bronze. For custom colours please consult factory.



[www.rabdesign.ca](http://www.rabdesign.ca)

## Catalog Code

SPQ

8, 10, 12, 14, 16 (FEET)

HEIGHT IN FEET

BRZ - BRONZE

BLK - BLACK

CC - CUSTOM FINISH

FINISH

H/H - HAND HOLE & COVER

3 - 3" TENON

1 - SINGLE DRILLING

2 - TWO DRILLINGS AT 180°

2A - TWO DRILLINGS AT 90°

3 - THREE DRILLINGS

OPTIONS

3" TENON AVAILABLE FOR TOP  
OF POLE

CAST ALUMINUM TOP  
CAP WHEN USING  
ARMED MOUNTED  
FIXTURES

DRILLINGS  
FOR ARM  
MOUNTED  
FIXTURES

8' - 16'

CAST ALUMINUM BASE WITH  
COVER AND FOUR 5/8" X  
15.00"  
LONG ZINC PLATED  
ANCHOR BOLTS.  
COMPLETE WITH  
NUTS AND WASHERS.

0511