



STAR LED STEP LIGHT

The Star step light has a unique fluted lens that allows a wider distribution to help illuminate walkways and stairs. Ideal for theatres or where you want low level lighting effects.

HOUSING Metal housing with two knock out power entries 7/8" KO. Housing has a white polyester powder coat finish and can be used for concrete pours.

DIFFUSER Thick, fluted clear acrylic lens.

FASTENERS Captive and recessed stainless steel.

LEDS Available in 1.2 watt with an integral driver. LEDS are available in White, Blue, Red and Green. They are also available with a narrow, medium or wide beam lens. Drivers are line voltage in at 120 volts.

DRIVER All drivers are integral 120 volts power in.

FACE PLATE Face plate is made of aluminum with a polyester powder coat finish.



FINISH All units have a polyester powder coat finish. Standard colours are Sparkle Silver, Black and White. For custom colours please consult factory.

MOUNTING For concrete pour only. For indoor and outdoor use.



www.rabdesign.ca

Catalog Code

STAR

1W - WHITE

1R - RED

1B - BLUE

1G - GREEN

LEDS

NARROW, MEDIUM, WIDE

BEAM FOR LEDS ONLY

120V

VOLTAGE

SPS - SPARKLE SILVER

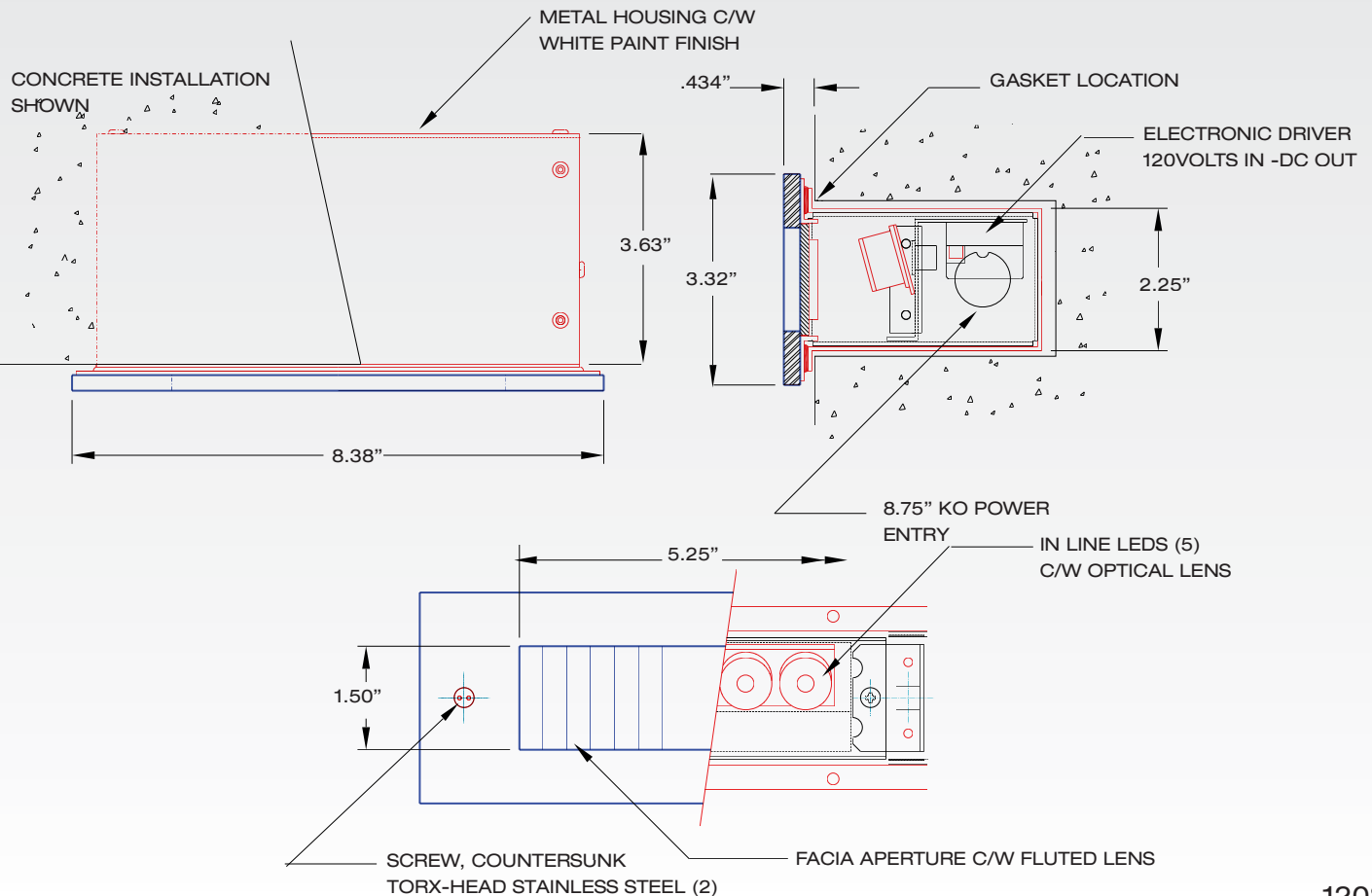
BLK - BLACK

WH - WHITE

FINISH CC - CUSTOM COLOUR

RAB
DESIGN

Dimensions



1208

www.rabdesign.ca