



SUNSPOT BY THORN

The SUNSPOT uses a narrow beam, high intensity projector for feature lighting employing Metal Halide or Tungsten Halogen quartz lamps. Particularly suitable for lighting statues, towers, flag poles, churches and signs. Variation of beam achieved by choice of front glass.

HOUSING Two-piece, LM6 cast aluminum with a polyester powder coat finish in black. .

LENS The Sunspot offers 5 glass lens for distribution. CLEAR GLASS - SYMMETRIC, STIPPLED GLASS SYMMETRIC, PRISMATIC GLASS - DI-SYMMETRIC, WIDE GLASS - DI-SYMMETRIC, and EXTRA WIDE GLASS. Glass lens is held in place with a aluminum retaining ring.

BALLAST All ballasts are Tri-Tap 120,277,347 volts, for the HIT ceramic 150 watt Metal Halide option.

WATTAGES The Sunspot has two lamp types. The HIT ceramic 150 watt Metal Halide and 300 and 500 watt quartz.

LAMP All units come complete with lamp. Lamps are replaced by removing the rear section, which allow re-lamping without having to re-aim the fixture.



SOCKET Bi-pin base 4KV pulse-rated socket for either Metal Halide option or Quartz option.

INSTALLATION / MOUNTING Floodlight is fully adjustable on a yoke, attached via a central 22mm hole. Two additional 11mm holes are available at 120mm centres.

OPTIONS The sunspot has a hood option along with three visor sizes 20cm, 30cm and 50cm.

Catalog Code

OSQ

150MH - 150W CERAMIC
METAL HALIDE
300Q - 300W QUARTZ*
500Q - 500W QUARTZ*

LAMP

120 277 347

VOLTAGE

OMC - CLEAR GLASS
SYMMETRIC
OMS - STIPPLED GLASS
SYMMETRIC
OMP - PRISMATIC GLASS
DI-SYMMETRIC
OMW - WIDE GLASS
DI-SYMMETRIC
OME - EXTRA WIDE GLASS

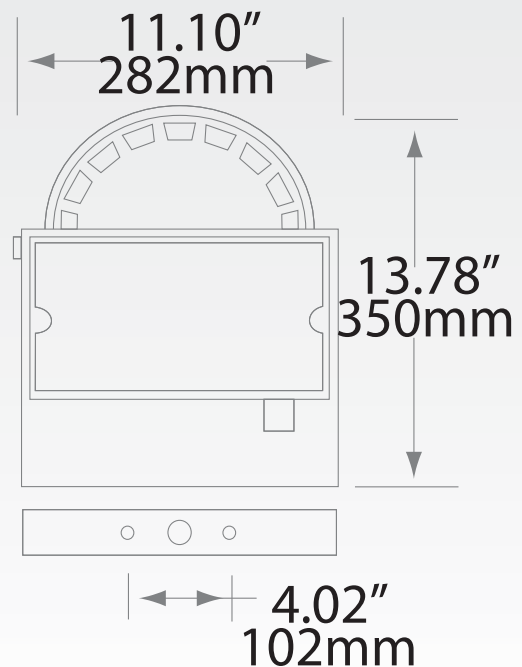
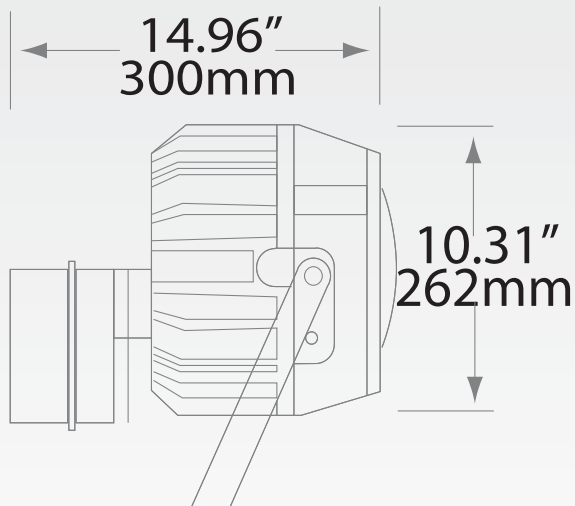
LENS

OQD - HOOD
OQV20 - VISOR 20CM
OQV30 - VISOR 30CM
OQV50 - VISOR 50CM

OPTIONS

* MUST USE 120 VOLTS ONLY

Dimensions



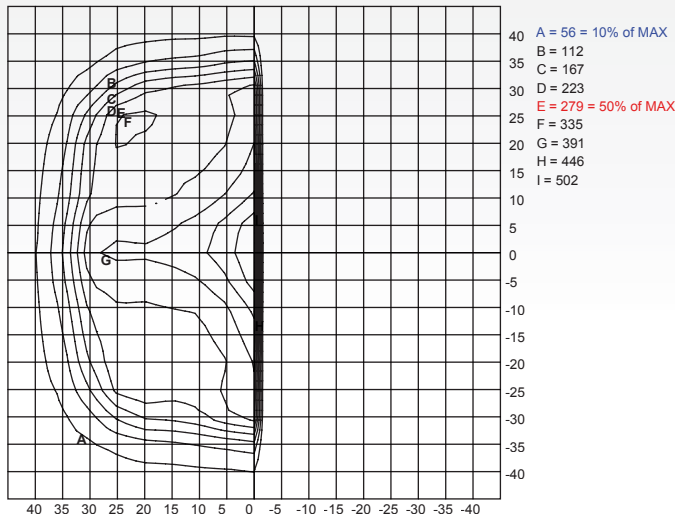
0109

150W MH WITH OME LENS

CATALOG NUMBER: OSQ150 + OME
 FILENAME: OSQ150 + OME.IES
 IESNA: LM-63-1995
 [TEST] TLL00771.ITF - R0001172
 [DATE] 26JAN87
 [MANUFAC] Thorn Lighting UK
 [LUMCAT] OSQ150 + OME
 [LUMINAIRE] Extra wide symmetric beam specialist floodlight
 [LAMP] 1 x 150W HIE

SUMMARY DATA
 EFFICIENCY (Total): 3.7 %
 LUMENS/LAMP: 13000
 NO. OF LAMPS: 1
 LUMINOUS OPENING: CIRCULAR
 Diameter: 0.15 (Meters)
 INPUT WATTS: 174
 NEMA/IES TYPE: 5H X 5V
 HORIZONTAL FIELD ANGLE (10%): 79.4
 VERTICAL FIELD ANGLE (10%): 79.3
 HORIZONTAL BEAM ANGLE (50%): 64.7
 VERTICAL BEAM ANGLE (50%): 64.1

ISO-CANDELA DIAGRAM

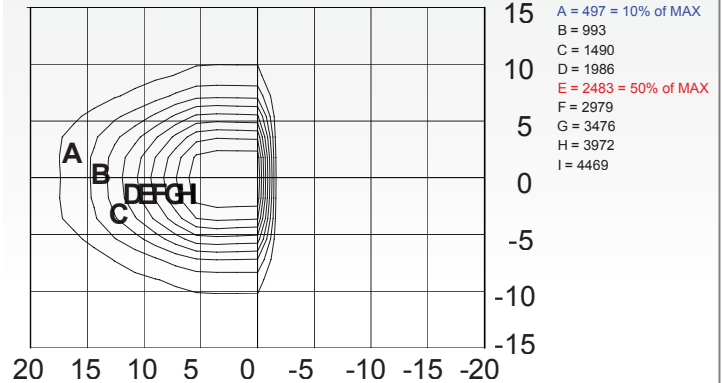


150W MH WITH OMP LENS

CATALOG NUMBER: OSQ150 + OMP
 FILENAME: OSQ150 + OMP.IES
 IESNA: LM-63-1995
 [TEST] TLL00769.ITF - R0000251
 [DATE] 26JAN87
 [MANUFAC] Thorn Lighting UK
 [LUMCAT] OSQ150 + OMP
 [LUMINAIRE] Medium asymmetric beam specialist floodlight
 [LAMP] 1 x 150W HIE

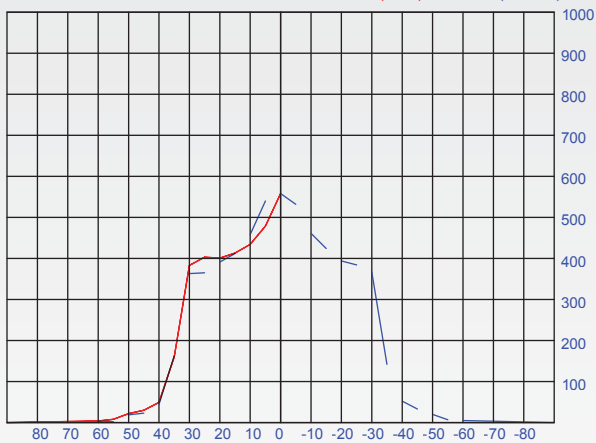
SUMMARY DATA
 EFFICIENCY (Total): 3.6 %
 LUMENS/LAMP: 13000
 NO. OF LAMPS: 1
 LUMINOUS OPENING: CIRCULAR
 Diameter: 0.15 (Meters)
 INPUT WATTS: 174
 NEMA/IES TYPE: 3H X 2V
 HORIZONTAL FIELD ANGLE (10%): 34.7
 VERTICAL FIELD ANGLE (10%): 19.5
 HORIZONTAL BEAM ANGLE (50%): 21.1
 VERTICAL BEAM ANGLE (50%): 11.2

ISO-CANDELA DIAGRAM



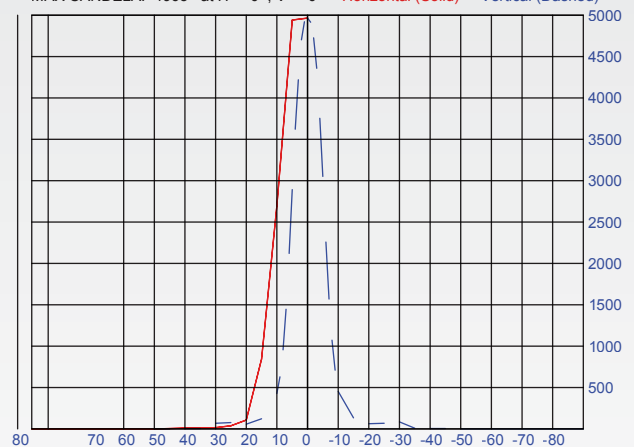
CANDELA TRACE

MAX CANDELA: 558 at H = 0, V = 0 Horizontal (Solid) Vertical (Dashed)



CANDELA TRACE

MAX CANDELA: 4965 at H = 0, V = 0 Horizontal (Solid) Vertical (Dashed)



150W MH WITH OMS LENS

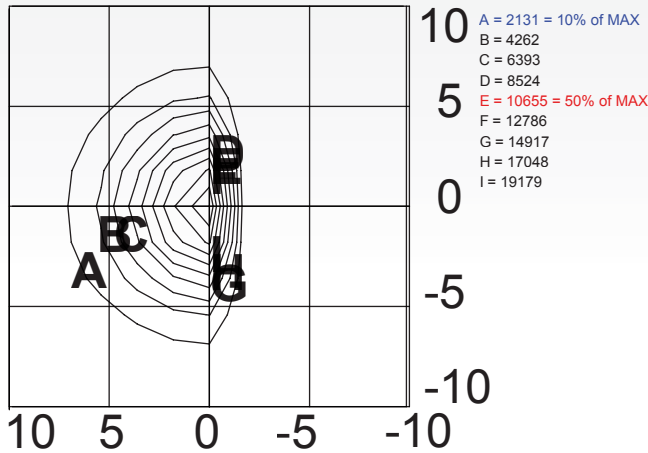
CATALOG NUMBER: OSQ150 + OMS

FILENAME: OSQ150 + OMS.IES
IESNA: LM-63-1995
[TEST] TLL00768.ITF - R0000250
[DATE] 24JAN87
[MANUFAC] Thorn Lighting UK
[LUMCAT] OSQ150 + OMS
[LUMINAIRE] Narrow symmetric beam specialist floodlight
[LAMP] 1 x 150W HIE

SUMMARY DATA

EFFICIENCY (Total): 3.6 %
LUMENS/LAMP: 13000
NO. OF LAMPS: 1
LUMINOUS OPENING: CIRCULAR
Diameter: 0.15 (Meters)
INPUT WATTS: 174
NEMA/IES TYPE: 1H X 1V
HORIZONTAL FIELD ANGLE (10%): 14.0
VERTICAL FIELD ANGLE (10%): 13.6
HORIZONTAL BEAM ANGLE (50%): 6.8
VERTICAL BEAM ANGLE (50%): 6.9

ISO-CANDELA DIAGRAM



150W MH WITH OMW LENS

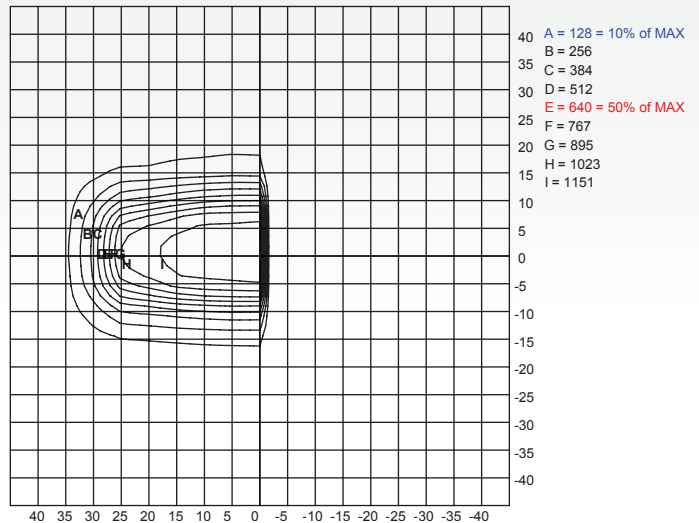
CATALOG NUMBER: OSQ150 + OMW

FILENAME: OSQ150 + OMW.IES
IESNA: LM-63-1995
[TEST] TLL00770.ITF - R0001171
[DATE] 26JAN87
[MANUFAC] Thorn Lighting UK
[LUMCAT] OSQ150 + OMW
[LUMINAIRE] Wide asymmetric beam specialist floodlight
[LAMP] 1 x 150W HIE

SUMMARY DATA

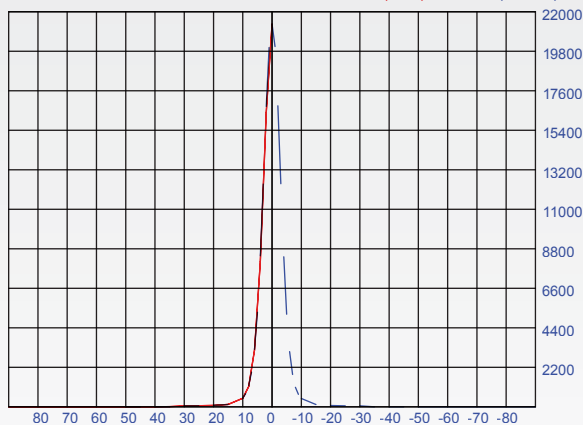
EFFICIENCY (Total): 3.6 %
LUMENS/LAMP: 13000
NO. OF LAMPS: 1
LUMINOUS OPENING: CIRCULAR
Diameter: 0.15 (Meters)
INPUT WATTS: 174
NEMA/IES TYPE: 4H X 3V
HORIZONTAL FIELD ANGLE (10%): 68.7
VERTICAL FIELD ANGLE (10%): 34.4
HORIZONTAL BEAM ANGLE (50%): 56.4
VERTICAL BEAM ANGLE (50%): 20.0

ISO-CANDELA DIAGRAM



CANDELA TRACE

MAX CANDELA: 21310 at H = 0, V = 0 Horizontal (Solid) Vertical (Dashed)



CANDELA TRACE

MAX CANDELA: 1279 at H = 0, V = 0 Horizontal (Solid) Vertical (Dashed)

