



## VICTORIA

*The Victoria is ideal for many applications including small strip malls, pedestrian walkways and common areas. When used in conjunction with the larger versions you can maintain the same look throughout a large complex. The optics for the Victoria are segmented, multifaceted.*

**HOUSING** Extruded aluminum min. 0.080" (2 mm) Max 0.410" (10 mm) using precision clamp joint construction. Housing is painted with a powder coat finish.

**REFLECTOR** Optics are segmented, multifaceted and rotatable. The Victoria has the following distributions Type II, III IV and type V is available as round or square, This is achieved by having the lamp in the vertical position. The Victoria is dark sky friendly.

**BALLAST** Ballasts are mounted on a tool-less entry that is hinged. All ballasts are Tri-Tap 120,277,347 volts. For 208 and 240 CWI options please consult factory. Available wattages for High Pressure Sodium are 50, 70, 100 and 150. For standard Metal Halide the wattages are 50, 70, 100, 150 and 175. For Pulse Start Metal Halide 175 and 200.

**SOCKET** Medium base 4KV pulse-rated socket with a nickel-plated screw shell and a spring-loaded centre contact.

**LAMP** All units come with lamp shipped separately.



### MOUNTING

**POLE MOUNT** Extruded aluminum arms are available in 4", 6" and 12" lengths.

**POST TOP** Slip fits a 2-3/8" tenon.

**WALL MOUNT** Extruded aluminum arm 4" with a cast aluminum bracket.

**LENS FRAME** Made of extruded aluminum and is self-hinged that opens to 120 degrees. The Glass is clear tempered also available as an option is frosted glass. The glass and frame have a neoprene gasket. Also available is a frosted glass.

**FINISH** Powder coat paint finish. Standard colours are black bronze and white. Custom colours are available.

**OPTIONS** Quartz restrike, house side shield, photocell, modular disconnect, and fusing.



[www.rabdesign.ca](http://www.rabdesign.ca)

## Catalog Code

VIC

50HPS 70HPS 100HPS 150HPS  
50MH 70MH 100MH 150MH 175MH  
175MHP 200MHP

LAMP

120 277 347 208CW1\* 240CW1\*

VOLTAGE

LG - CLEAR GLASS  
FG - FROSTED GLASS

LENS

T2 - TYPE II, T3 - TYPE III  
T4 - FORWARD THROW  
T5S - SQUARE T5R - ROUND

REFLECTOR

PM - POLE MOUNT  
YM - YOKE MOUNT  
WM - WALL MOUNT

MOUNTING

ASA4 - 4" ARM ASA6 - 6" ARM  
ASA12 - 12" ARM

ARM

BLK - BLACK WH - WHITE  
BRZ - BRONZE  
CC - CUSTOM COLOUR

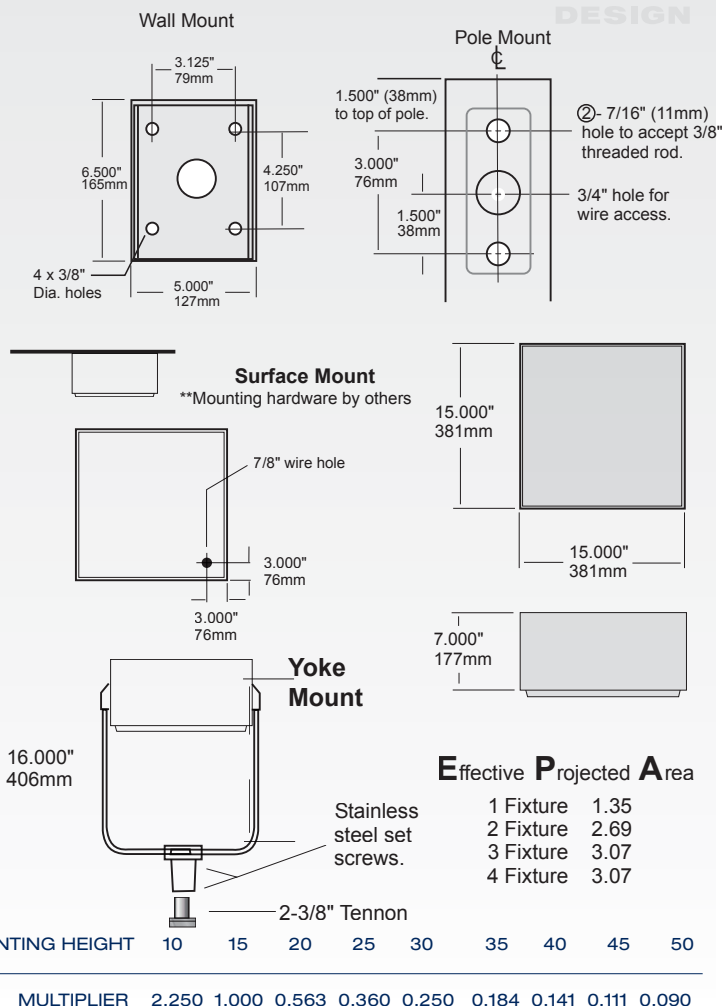
FINISH

PC - PHOTOCELL  
QRS - QUARTZ RESTRIKE  
F - FUSE  
MD - MODULAR DISCONNECT  
HSS - HOUSE SIDE SHIELD

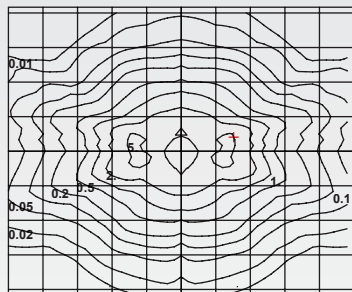
OPTIONS

PLEASE CONSULT FACTORY

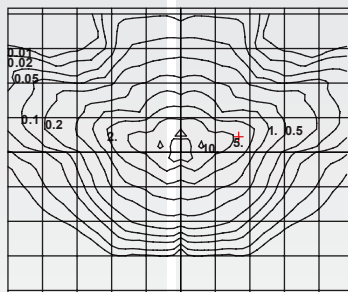
## Dimensions



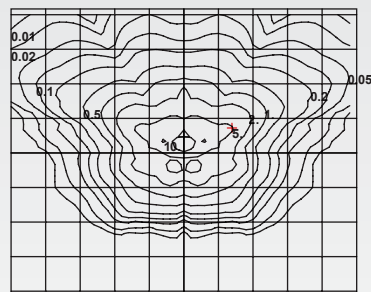
VIC TYPE I 175MH



VIC TYPE II 175MH

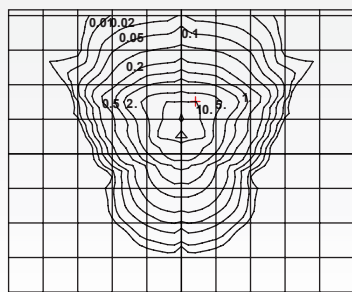


VIC TYPE III 175MH

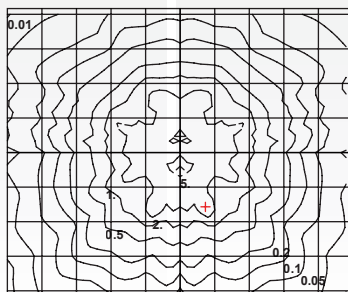


Mounting Height = 15' Each box is one mounting height

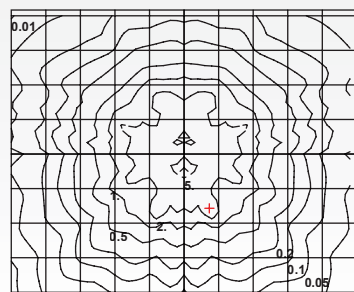
VIC TYPE IV 175MH



VIC TYPE V ROUND 175MH



VIC TYPE V SQUARE 175MH



[www.rabdesign.ca](http://www.rabdesign.ca)