



WATERFORD

The Waterford offers the traditional marina style fixture with performance and easy maintenance. The Waterford has three distributions available (type II, III and type VS), with a glass lens. The lens frame assembly is self-hinged and can open to 100°. Ideal for use on any project located near or on the waterfront. Great for estates, condominiums, parks, commercial buildings or street lighting.

ARM Extruded aluminum with 2 -3/8" thread rod for mounting to pole or wall bracket.

UPPER HOUSING Extruded aluminum with decorative rings.

LOWER HOUSING Heavy duty spun aluminum bell (1100 series aluminum alloy Min. 0.100" bell housing (2.5mm)

REFLECTOR Optics are segmented, multifaceted and rotatable. The following distributions Type II, III and type VS. Also available with an internal house side cut-off. The Waterford is dark sky friendly.

LENS ASSEMBLY Heavy duty formed aluminum alloy, Self-hinge that opens 100° degrees. Clear, tempered glass encased with EPDM gasket.

MOUNTING Arm mounted on a pole.

SOCKET Medium base 4KV pulse-rated socket with a nickel-plated screw shell and a spring-loaded centre contact.



LAMP Included

FINISH Standard finishes are black, bronze and white. Custom colours are available.

OPTIONS Photocell, Quartz Restrike.



www.rabdesign.ca

Catalog Code

WATERFORD

50HPS 70HPS 100HPS 150HPS
50MH 70MH 100MH 150MH 175MH
175MHP 200MHP

LAMP

120 277 347 208CW1* 240CW1*

VOLTAGE

LG - CLEAR GLASS
FG - FROSTED GLASS

LENS

II - TYPE 2 111 - TYPE 3
VS - SQUARE

REFLECTOR

PM - POLE MOUNT
WM - WALL MOUNT

MOUNTING

BLK - BLACK WH - WHITE
BRZ - BRONZE
CC - CUSTOM COLOUR

FINISH

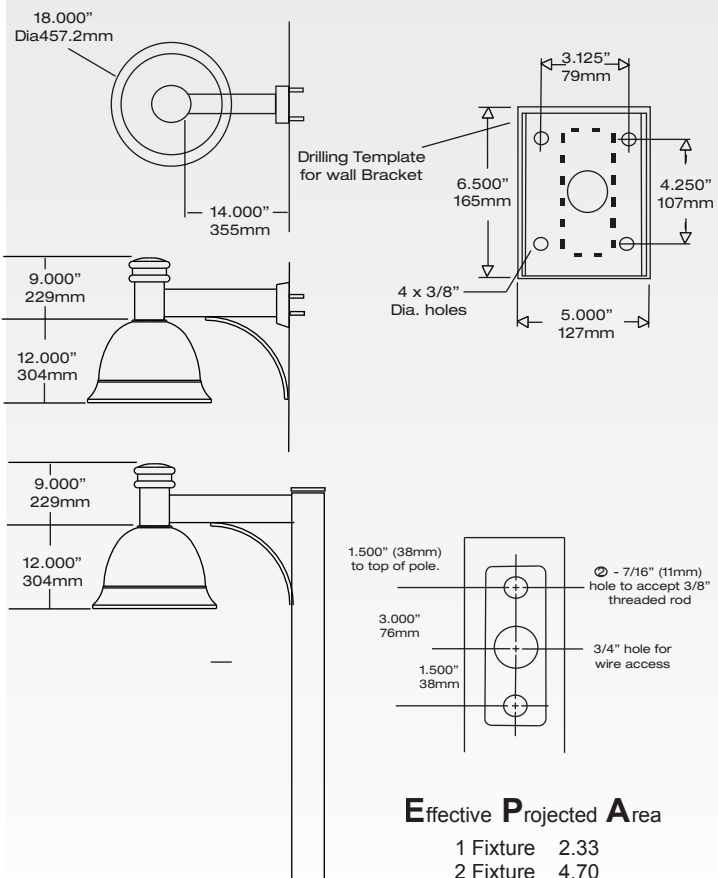
PC - PHOTOCELL
QRS - QUARTZ RESTRIKE
F - FUSE
MD - MODULAR DISCONNECT
HSS - HOUSE SIDE SHIELD

OPTIONS

* NOT AVAILABLE ON ALL WATTAGES
PLEASE CONSULT FACTORY

Dimensions

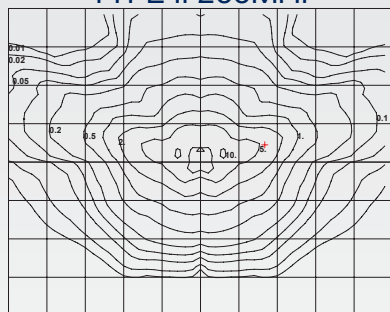
RAB
DESIGN



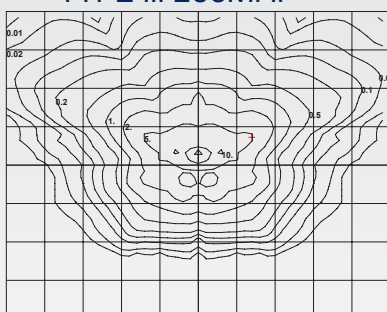
Effective Projected Area

1 Fixture 2.33
2 Fixture 4.70

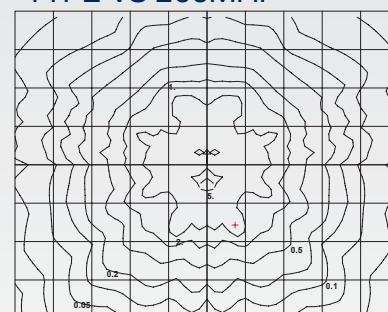
TYPE II 200MHP



TYPE III 200MHP

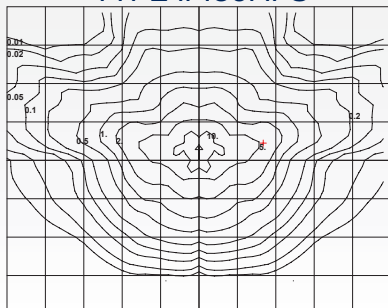


TYPE VS 200MHP

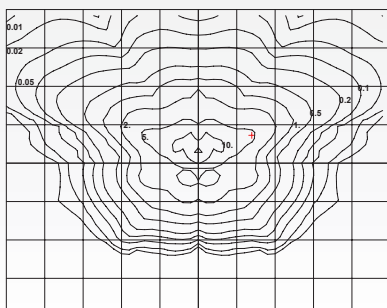


Mounting Height = 15' Each box is one mounting height

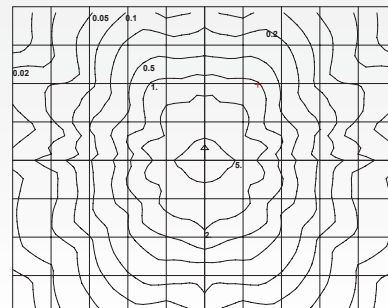
TYPE II 150HPS



TYPE III 150HPS



TYPE VS 150HPS



www.rabdesign.ca