



WINDSOR

The Windsor is ideal for many applications including small strip malls, pedestrian walkways and common areas. When used in conjunction with the Victoria and the larger version you can maintain the same look throughout a large complex. The optics for the Windsor are segmented, multifaceted.

HOUSING Extruded aluminum min. 0.080" (2 mm) Max 0.410" (10 mm) using precision clamp joint construction. Housing has a powder coat paint finish.

REFLECTOR Optics are segmented, multifaceted and rotatable. The Windsor has the following distributions Type II, III IV and type V. The Windsor is dark sky friendly.

BALLAST All ballasts are Tri-Tap 120,277,347 volts. For 208 and 240 CWI options please consult factory. Available wattages for High Pressure Sodium are 150, 250 and 400. For standard Metal Halide the wattages are 250, 350 and 400. For Pulse Start Metal Halide 250, 320 and, 400.

LAMP All units come with lamp shipped separately.

SOCKET Mogul base 4KV pulse-rated socket with a nickle-plated screw shell and a spring-loaded centre contact.



MOUNTING

POLE MOUNT Extruded aluminum arm available in 4", 6: and 12" lengths.

WALL MOUNT Extruded aluminum arm 4" with a cast aluminum bracket.

LENS FRAME Made of extruded aluminum and is self-hinged that opens to 120 degrees. The Glass is clear tempered, also available as an option is frosted glass. The glass and frame have a neoprene gasket.

FINISH Powder coat paint finish. Standard colours are black, bronze and white. Custom colours are available.

OPTIONS Quartz restrike, house side shield, photocell, modular disconnect and fusing.



www.rabdesign.ca

Catalog Code

WIN

150HPS 250HPS 400HPS 250MH
350MH 400MH 250MHP 320MHP
400MHP

LAMP

120 277 347 208CWI* 240CWI*

VOLTAGE

LG - CLEAR GLASS
FG - FROSTED GLASS

LENS

II - TYPE 2 III - TYPE 3
IV - FORWARD THROW
V - SQUARE

REFLECTOR

PM - POLE MOUNT
WM - WALL MOUNT

MOUNTING

ASA4 - 4" MOUNTING ARM
ASA6 - 6" MOUNTING ARM
ASA12 - 12" MOUNTING ARM

ARM

BLK - BLACK WH - WHITE
BRZ - BRONZE
CC - CUSTOM COLOUR

FINISH

PC - PHOTOCELL
QRS - QUARTZ RESTRIKE
F - FUSE
MD - MODULAR DISCONNECT
HSS - HOUSE SIDE SHIELD

OPTIONS

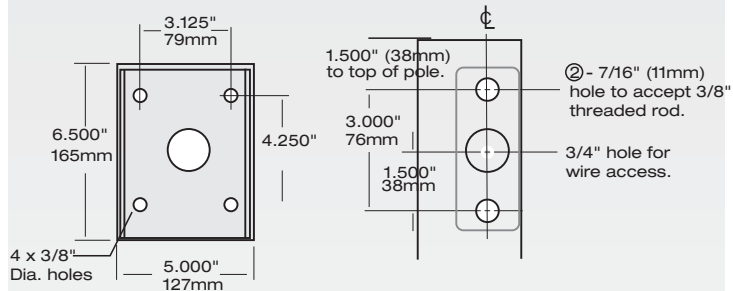
* NOT AVAILABLE ON ALL WATTAGES
PLEASE CONSULT FACTORY

Dimensions

RAB
DESIGN

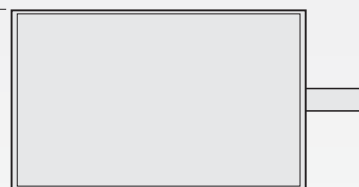
Wall Mount

Pole Mount



TOP VIEW

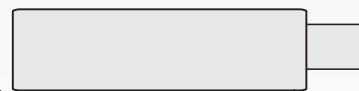
19.000"
482mm



23.750"
603mm

SIDE VIEW

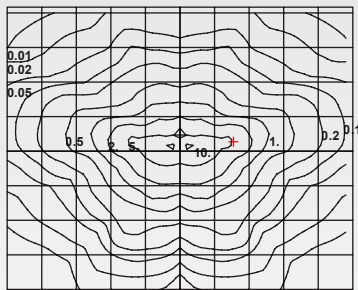
7.000"
177mm



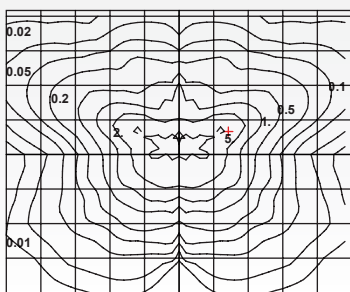
EPA

1 FIXTURE 1.86
2 FIXTURES 3.72
3 FIXTURES 4.14
4 FIXTURES 4.14

WIN TYPE II 400MH



WIN TYPE III 400MH



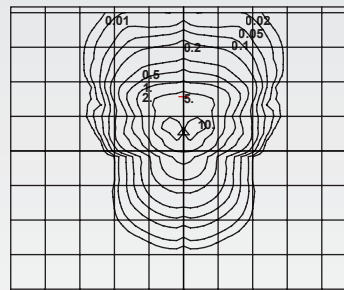
Mounting
Height

10
15
20
25
30
35
40
45
50

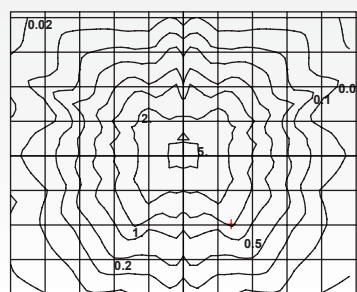
Multiplier

5.760
2.560
1.440
0.922
0.640
0.470
0.360
0.284
0.230

WIN TYPE IV 400MH



WIN TYPE V 400MH



www.rabdesign.ca