



WPC LARGE CUTOFF WALL PACK

Ideal for mounting above entry ways, loading docks and building perimeters where light trespass is a concern.

HOUSING Die-cast aluminum with 1/2" NPS tapped holes located on the top and both sides of the fixture. Mounting option on the back. Side hinged lens frame for ease of relamping.

REFLECTOR Specular anodized aluminum, removable for installation. Symmetrical light pattern maximizes distance between fixtures.

LENS The lens is a clear tempered glass, sealed with a continuous silicone rubber gasket.

BALLAST For High Pressure Sodium and Metal Halide ballasts are available in Tri-Taps 120-277-347 and CWI in 120-208-240. Wattages are 250 and 400 HPS and MH.

FINISH Polyester powder coat finish. Standard colours are charcoal and white. For custom colours please consult factory.



SOCKET Mogul base 4KV pulse-rated socket with a nickel-plated screw shell and a spring-loaded centre contact.

LAMP All units come complete with lamp.

OPTIONS Photocell, Single and double fusing.

Catalog Code

WPC

250HPS 400HPS
250MH 400MH
250MHP 320MHP 400MHP

LAMP

120 277 347 208CWI*
240CWI* 600*

VOLTAGE

CHA - CHARCOAL
WH - WHITE
CC - CUSTOM COLOUR

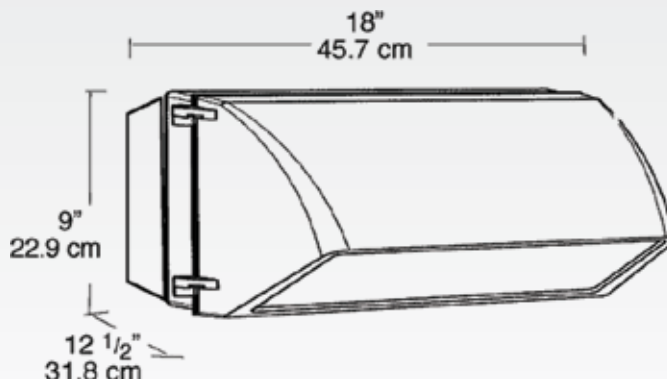
FINISH

PC - PHOTOCELL
SF - SINGLE FUSE
DF - DOUBLE FUSE

OPTIONS

*NOT AVAILABLE IN ALL WATTAGES
PLEASE CONSULT FACTORY.

Dimensions



CATALOG NUMBER: WP4CH400QT

FILENAME: T17872T.IES

IESNA:LM-63-1995

[TEST] 17872

[MANUFAC]RAB ELECTRIC - OUTDOOR AREA WALLPACK LUMINAIRE

[LUMCAT]WP4CH400QT

[LUMINAIRE]WITH SEMI-SPECULAR TEXTURED REFLECTOR AND CLEAR FLAT GLASS LENS

[LAMP]ONE PHILIPS 400 WATT MH LAMP

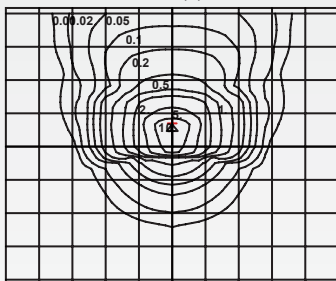
[LAMP]CATJLU400/PLUS/ECO. LUMEN RATING: 34500 Lms.

[OTHER]OPERATING AT 400 WATTS WITH ADDED HOOD

SUMMARY DATA

EFFICIENCY (Total):	37.3 %
EFFICIENCY (Down / Up):	37.3 % / 0.0 %
EFFICIENCY (Street / House):	31.8 % / 5.5 %
LUMENS/LAMP:	34500
NO. OF LAMPS:	1
LUMINOUS OPENING:	RECTANGULAR
Width:	0.00 (Feet)
Length:	0.00
Height:	0.00
INPUT WATTS:	0

ISO-ILLUMINANCE DIAGRAM (fc)

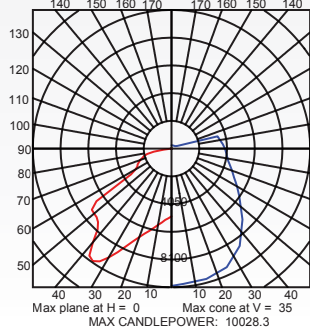


Mounting Height	Multiplier
10	4.000
15	1.778
20	1.000
25	0.640
30	0.444
35	0.327
40	0.250
45	0.198
50	0.160

+ = Point of max candela

Mounting Height = 20 Feet. Each box represents one mounting height.

PLANE & CONE DIAGRAM



Max plane at H = 0 Max cone at V = 35
MAX CANDLEPOWER: 10028.3

CATALOG NUMBER: WP4CS400QT

FILENAME: T17872T.IES

IESNA:LM-63-1995

[TEST] 17872

[MANUFAC]RAB ELECTRIC - OUTDOOR AREA WALLPACK LUMINAIRE

[LUMCAT]WP4CS400QT

[LUMINAIRE]WITH SEMI-SPECULAR TEXTURED REFLECTOR AND CLEAR FLAT GLASS LENS

[LAMP]ONE PHILIPS 400 WATT HPS LAMP

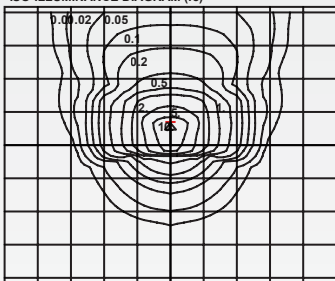
[LAMP]CATJLU400/PLUS/ECO. LUMEN RATING: 50000 Lms.

[OTHER]OPERATING AT 400 WATTS WITH ADDED HOOD

SUMMARY DATA

EFFICIENCY (Total):	25.8 %
EFFICIENCY (Down / Up):	25.8 % / 0.0 %
EFFICIENCY (Street / House):	22.0 % / 3.8 %
LUMENS/LAMP:	50000
NO. OF LAMPS:	1
LUMINOUS OPENING:	RECTANGULAR
Width:	0.00 (Feet)
Length:	0.00
Height:	0.00
INPUT WATTS:	0

ISO-ILLUMINANCE DIAGRAM (fc)

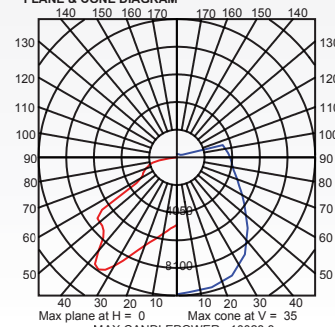


Mounting Height	Multiplier
10	4.000
15	1.778
20	1.000
25	0.640
30	0.444
35	0.327
40	0.250
45	0.198
50	0.160

+ = Point of max candela

Mounting Height = 20 Feet. Each box represents one mounting height.

PLANE & CONE DIAGRAM



Max plane at H = 0 Max cone at V = 35
MAX CANDLEPOWER: 10028.3

www.rabdesign.ca