

LIGHT HATCH^{*}

PROUDLY
Made In Canada

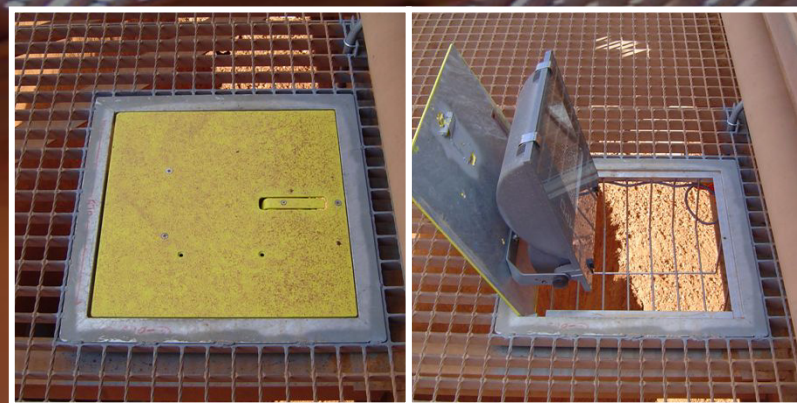
* Patent Protected

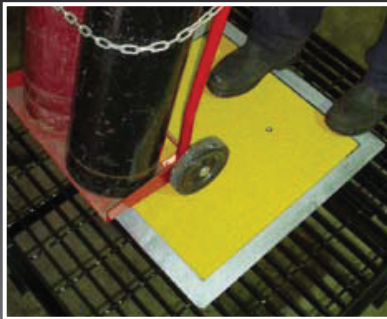
Available exclusively from:

RAB DESIGN Lighting Inc.
222 Islington Ave., Toronto, ON M8V 3W7
TEL. 416-252-9454 / 800-268-0381
FAX. 416-252-9664 / 800-668-5517

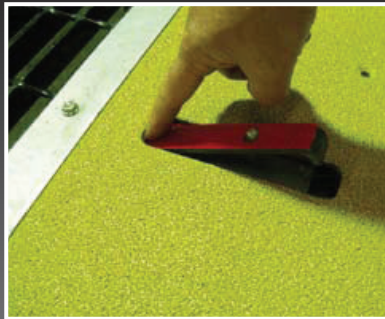
LIGHT HATCH

Industrial lighting solution for
hazardous and hard to reach areas

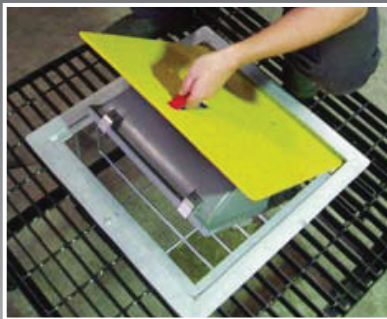




The walkway or platform can be used for normal pedestrian traffic once the Light Hatch is installed.



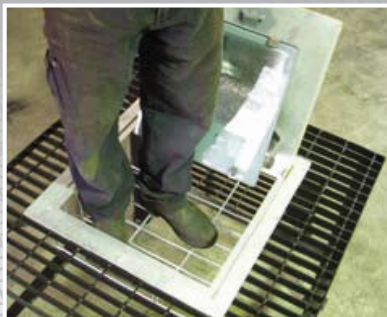
Once unlocked with a screwdriver, the built in handle is revealed with the push of a finger. The handle falls back in place when released.



The Light Hatch is easily opened and closed with the built in handle. When closed, the unit has a built in lockable handle which reduces the risk of trips and helps to ensure that the unit is fully closed.



The light is attached to the underside of the hatch top plate and is revealed when the hatch is opened. Once fully opened, it stays open with its own weight.



The strong 3mm round bar safety basket helps to stop items falling through the opening. It also protects the light when closed.



The Light Hatch is closed after the lamp is changed. The handle is pushed back into place and the walkway returns to normal.

FEATURES BENEFITS

Reduces lamp replacement and maintenance costs as the fixture is easy to access.

Reduces health and safety hazards as maintenance work is completed from the safety of a walkway.

- Easy to open and close with built in lock down handle
- Lamps and ballasts are easily changed - reducing maintenance time
- Heavy duty safety basket below light fixture is rated to support 700 pounds (over 300kg)
- Fully galvanized to withstand harsh industrial environments
- Highly visible industrial grade anti-skid coating on the top plate, rated for indoors or outdoors at temperatures -30°C to +60°C available in a variety of safety colours
- Standard configuration supports a maximum 400W MH or HPS, optional 1000W MH configuration available
- 100% Made in Canada. Patent protected.

