

INSTALLATION INSTRUCTIONS



ELECTRICAL SHOCK HAZARD

READ, UNDERSTAND, and FOLLOW these instructions before installing the equipment.

WARNING

Disconnect the Electrical supply power at the service panel (fuse or circuit breaker box). Failure to do so could result in serious injury or death. Only qualified electricians should install this fixture and the installation MUST conform to the Canadian Electrical Code Part I and all local codes and ordinances. Ensure that only proper tools, materials, and equipment are used to complete the installation.

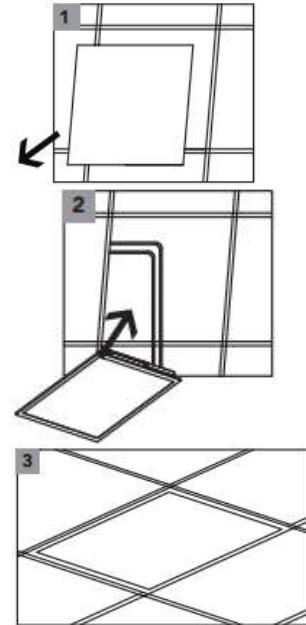
SAFETY

- Proper grounding is required to ensure personal safety.
- Fixture should be mounted in locations where unauthorized personnel will not readily subject it to tampering.
- Do not use this equipment for anything other than its intended purpose.
- Servicing this equipment should be performed by qualified service personnel.
- Save these instructions.

INSTALLATION

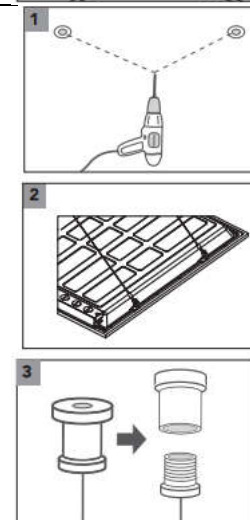
FLUSH CEILING MOUNT

- Make appropriate wiring connections as per the wiring diagram.
- Remove the plasterboard from the ceiling.
- Rotate the fixture in the proper orientation by aligning it with the ceiling grid.
- Fix the panel into ceiling.
- Gently lower fixture to rest on the T bar ceiling.



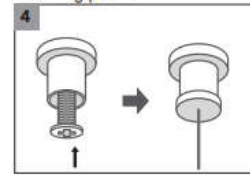
PENDANT MOUNT (requires optional purchase of accessories)

- Drill two mounting holes aligned with centerline of fixture (this line should be perpendicular to sides with hooks), make hole spacing equal to hook spacing.
- Buckle the suspension hooks to the triangle hooks attached on panel.
- Twist off the rope grab devices into two parts.
- Using self-tapping screws, lock the feminine part to mounting holes, then twist on the previously removed masculine part.



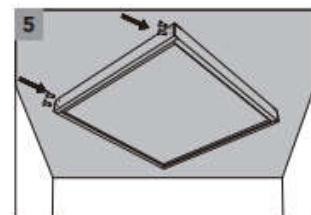
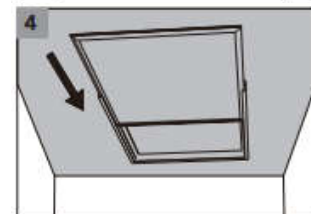
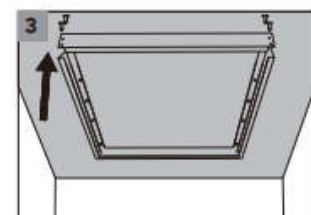
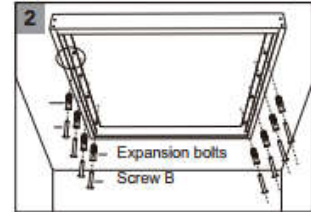
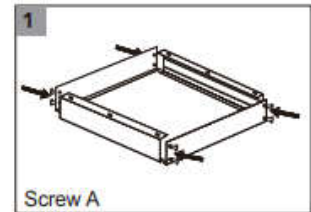
INSTALLATION INSTRUCTIONS

- Release wire and connect to panel light.



SURFACE MOUNT (requires optional purchase of accessories)

- Assemble the four frames with smaller screw to create square the size of the panel light.
- Fix the square made of four frames to the ceiling with larger screw.
- Demount one side of the frame to make room for panel light.
- Put the panel into the square frame.
- Put the previously removed piece of frame back in place using the smaller screw.



WIRING

- Check that the line voltage is correct.
- Connect fixture **GROUND** (green) wire to power supply **GROUND** (green) wire.
- Connect fixture **WHITE** wire to power supply **NEUTRAL** wire.
- Connect fixture **BLACK** wire to power supply **LINE** wire

If the fixture includes 0-10V dimming functionality, connect **GREY** and **VIOLET** wires to the dimming controller.

