



The RAY6-LED bollard is an architectural bollard in a sleek design that provides uniform, glare free illumination. The RAY6 features a 360° adjustable head and various beam configurations ranging from 60° to 360° to illuminate all angles.

APPLICATIONS

The RAY6 bollard is an architectural bollard suitable for landscape and pathway lighting with glare free distribution. Ideal for use in walkways, townhouses, condos, and parkettes.

Project	
Type	
Date	
Notes	

SPECIFICATIONS

Construction

Unit is a 6" round bollard with a 10" top cap. Body is made from extruded aluminum and has a custom designed twist lock mechanism for secure and easy installation. The cast aluminum base is secured with stainless steel set screws. Body has a powder coat finish.

Optics

Advanced optics are able to illuminate all areas of sight. Various beam configurations ranging from 60°, 120°, 180°, 240°, 300° and 360°.

LEDs

Unit consists of 6 LED modules which can be removed to direct the light in desired direction. Colour temperature is 5000K standard, 4,000K and 3,000K are available as options.

Electrical

Unit has high efficiency drivers that are 120 - 277 volts standard. 347V, 24V DC and 24V AC are available as options.

Mounting

Cast aluminum base is secured with stainless steel screws. Custom twist lock mechanism securely anchors lower body to the base.

Finish

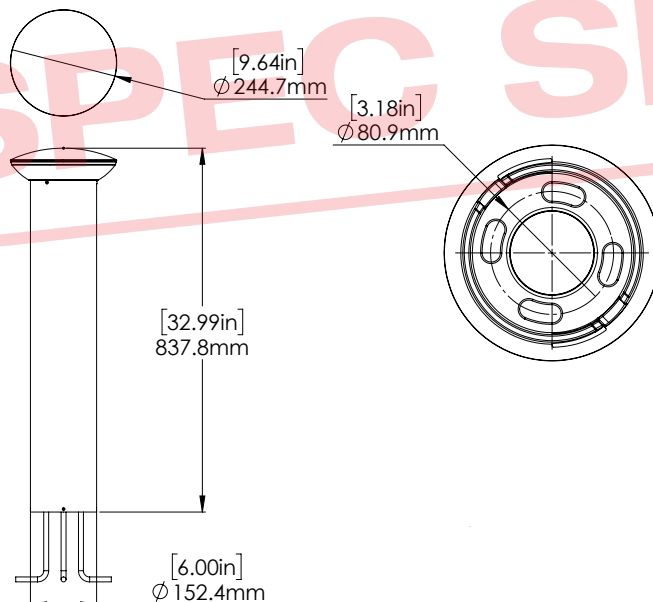
Standard powder coat finish is Bronze, Custom colours are available upon request.

Lumens and wattages will change based on LED Modules being used.

Watts	max. 35
Lumens	4,200
Efficacy	120 lumens per watt

Certifications	cULus
Working Temperature	-40°C to +40°C
Colour Temperature	5000K (standard)
LED life	100,000 hours
Warranty	5 years

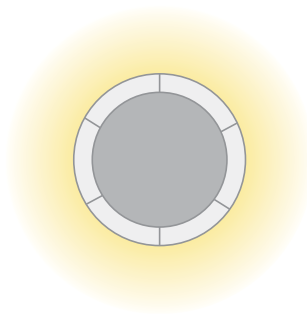
DIMENSIONS



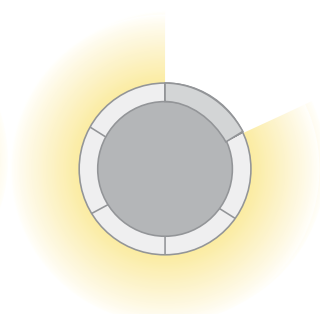
CUSTOM DESIGNED
TWIST LOCK MECHANISM



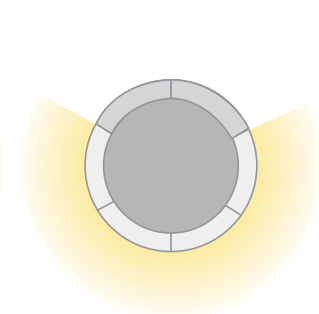
VARIOUS BEAM CONFIGURATIONS



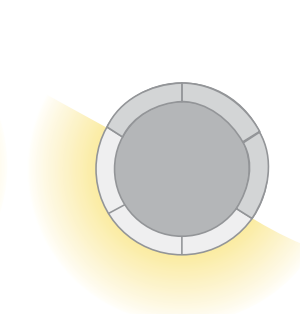
6 LED MODULES
(360°)



5 LED MODULES
(300°)



4 LED MODULES
(240°)



3 LED MODULES
(180°)



360° ADJUSTABLE HEAD

ORDERING GUIDE

RAY6	-		-		-		-	
LED35		VOLTAGE		COLOUR TEMP.		LED CONFIGURATION		FINISH
B - 120 - 277V*		5K - 5000K*		180°		BRZ - BRONZE*		
C - 347V*		4K - 4000K		240°		CC - CUSTOM COLOUR		
		3K - 3000K		300°				
				360°				

* Standard configuration