



Cover plate not included.

The RFL1-LED20 is a sleek, ruggedly designed, high efficiency floodlight. This LED flood has multiple mounting options and accessories to suit a wide range of applications.

APPLICATIONS

Ideal for building façades, sign lighting and wall washing in both commercial and industrial applications.

Project	
Type	
Date	
Notes	

SPECIFICATIONS

Construction

Precision die cast aluminum housing with clear tempered glass lens. Superior heat sink design with air-flow fins on the top and bottom to maximize fixture life.

LED configuration

Each unit has one high efficiency Chip on Board (COB) that delivers minimum 2,300 lumens. The LEDs have a colour temperature of 5000K as standard. 4000K, 3000K also available. The CRI is greater than 70 and the operating temperature range is -40°C to +40°C.

Beam Distribution

NEMA 6H X 6V (wide) is standard. NEMA 3H X 3V (narrow) is available as an option.

Electrical

Total system wattage of the unit is 20W. The standard unit has a high efficiency driver that operates at 120 - 277V. 347V also available as an option.

Mounting

Standard unit is available with two mounting options:
- Knuckle mount - 1/2" NPT knuckle. Round cover for 4" octagon box sold separately.
- Yoke mount - 3.64" deep yoke with watertight connector.

Finish

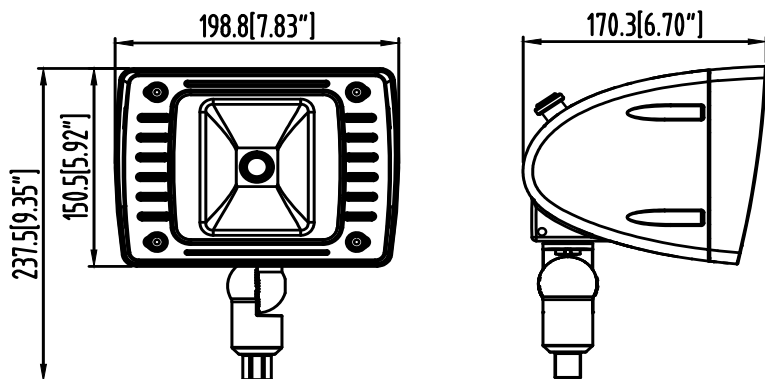
Standard finish is Bronze. Please consult factory for custom colour.

Accessories

Visor, Polycarbonate lens, Wire Guard, Photocell, Phillips Dynadimmer. Phillips Dynadimmer dims the fixture to 25% for 6 hours instead of operating at 100% at all times.

Watts	20W
Lumens	min. 2,300
Efficacy	min. 115 lumens per watt
Operating Temperature	-40°C to +40°C
Certification	cULus, IP65
Warranty	5 Years
Colour Temperature	5000K (standard) 4000K (option) 3000K (option)
LED life	100,000 hours
Effective Projected Area (EPA Rating)	0.35 sq ft
Total Harmonic Distortion	10%
Power Factor	0.982

DIMENSIONS



With Optional Narrow Beam (3X3)

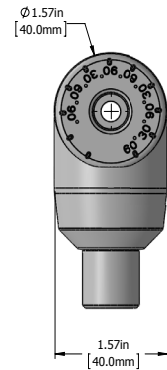
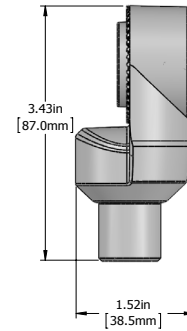
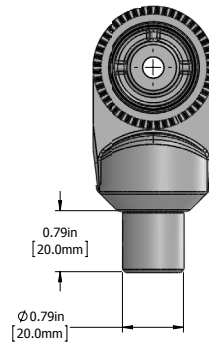


MOUNTING OPTIONS

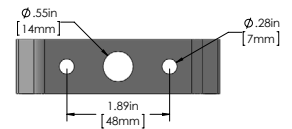
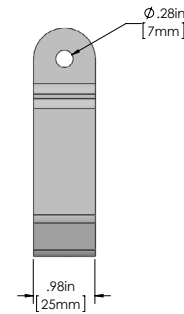
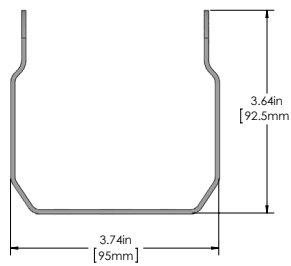
Knuckle, Yoke mount



Knuckle

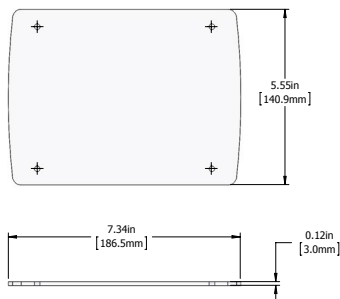


Yoke

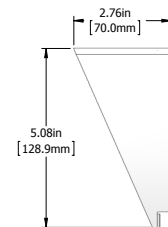
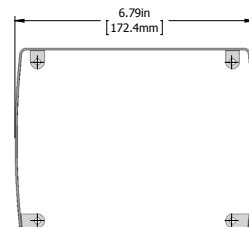
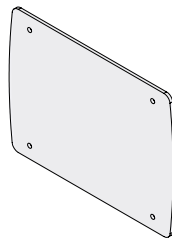


ACCESSORIES

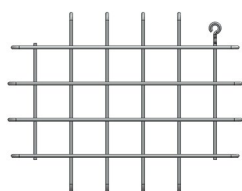
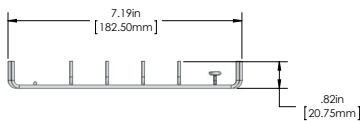
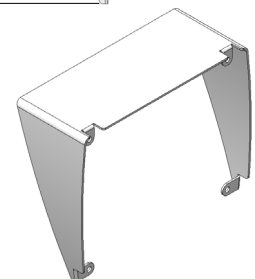
Polycarbonate lens, Wire guard, Visor



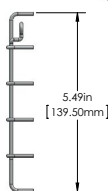
Polycarbonate lens



Visor



Wire Guard



ORDERING GUIDE

RFL1	-	LED20	-		-		-		-		-	
		VOLTAGE	COLOUR TEMP	BEAM	FINISH	MOUNTING	OPTIONS					
		B - 120 - 277V*	5K - 5000K*	W - Wide (6X6)*	BRZ - BRONZE*	YK - Yoke*	V - Visor					
		A - 120V	4K - 4000K	N - Narrow (3X3)	CC - CUSTOM COLOUR	KN - Knuckle*	WG - Wire Guard					
		F - 277V	3K - 3000K				PCL - Polycarbonate Lens					
		C - 347V					PC - Photocell					

* Standard configuration