



The WP-LED40 is an energy efficient wall light with a similar light output to a 150W metal halide fixture.

### APPLICATIONS

**Ideal for a variety of outdoor applications such as entrances, back doors, loading docks and building perimeters.**

<b>Project</b>	
<b>Type</b>	
<b>Date</b>	
<b>Notes</b>	

### SPECIFICATIONS

#### Construction

Side hinged die cast aluminum body with a durable chip and fade resistant powder coat paint finish. The WP-LED fixture has 3 conduit entries, one on each side and one on the top.

#### LED Configuration

The fixture contains the newest generation of LED chips that deliver a total lumen output of 4,554 lumens at an efficiency of 116 lumens/watt. LED colour temperature is 5000K.

#### Lens

Stippled borosilicate glass lens is heat and impact resistant.

#### Electrical

Total system wattage of the unit is 40W. The standard unit has a high efficiency driver that operates at 120 - 277V. 347V is available as an option.

#### Finish

Standard finish is Bronze. Custom colours are available as options.

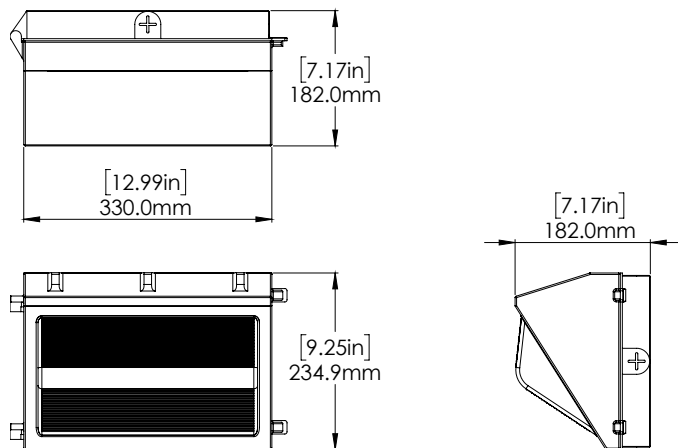
#### Options

Photocell

<b>Fixture Watts</b>	<b>40W</b>
<b>Lumens</b>	<b>4554</b>
<b>Efficacy</b>	<b>116 lumens/watt</b>

<b>Certification</b>	<b>cULus, DLC</b>
<b>LED Life</b>	<b>100,000 hours</b>
<b>Colour Temperature</b>	<b>5000K (standard)</b>
<b>Warranty</b>	<b>5 Years</b>
<b>Operating temperature</b>	<b>-40°C to +40°C</b>
<b>CRI</b>	<b>&gt;70</b>
<b>Total Harmonic Distortion</b>	<b>&lt; 8.42%</b>
<b>Power Factor</b>	<b>0.99</b>

### DIMENSIONS



## ORDERING GUIDE

<b>WP</b>	-	<b>LED40</b>	-		-		-	
			<b>VOLTAGE</b>	<b>COLOUR TEMP</b>	<b>FINISH</b>	<b>OPTIONS</b>		
			<b>B - 120 - 277V*</b>	<b>5K - 5000K*</b>	<b>BRZ - BRONZE*</b>	<b>PC - PHOTOCELL</b>		
			<b>C - 347V</b>		<b>CC - CUSTOM COLOUR</b>			
			<b>F - 277V**</b>					
			<b>O - 208V**</b>					

\* Standard configuration

\*\* Voltage option offered for use with photocell only