



The WP-LED75 is an energy efficient wall light with a similar light output to a 250W metal halide fixture.

APPLICATIONS

Ideal for a variety of outdoor applications such as entrances, back doors, loading docks and building perimeters.

Project	
Type	
Date	
Notes	

SPECIFICATIONS

Construction

Side hinged die cast aluminum body with a durable chip and fade resistant powder coat paint finish. The WP-LED fixture has 3 conduit entries, one on each side and one on the top.

LED Configuration

The fixture contains the newest generation of LED chips that deliver a total lumen output of 9,212 lumens at an efficiency of 121 lumens/watt. LED colour temperature is 5000K.

Lens

Stippled borosilicate glass lens is heat and impact resistant.

Electrical

Total system wattage of the unit is 76W. The standard unit has a high efficiency driver that operates at 120 - 277V. 347V is available as an option.

Finish

Standard finish is Bronze. Custom colours are available as options.

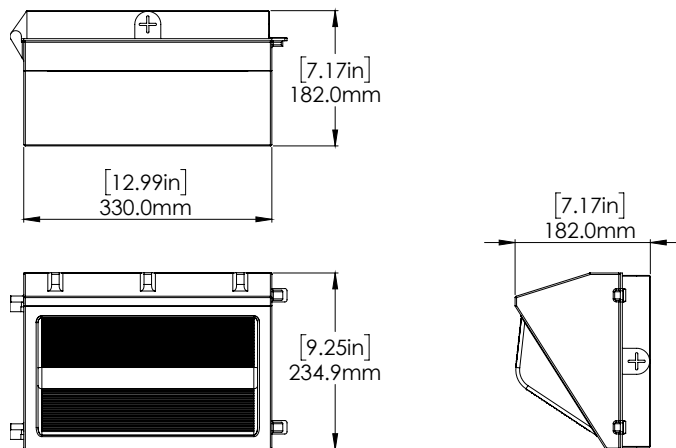
Options

Photocell

Fixture Watts	76W
Lumens	9,212
Efficacy	121 lumens/watt

Certification	cULus, DLC
LED Life	100,000 hours
Colour Temperature	5000K (standard)
Warranty	5 Years
Operating temperature	-40°C to +40°C
CRI	>70
Total Harmonic Distortion	<8.66%
Power Factor	0.99

DIMENSIONS



ORDERING GUIDE

WP	-	LED75	-		-		-	
			VOLTAGE	COLOUR TEMP	FINISH	OPTIONS		
			B - 120 - 277V*	5K - 5000K*	BRZ - BRONZE*	PC - PHOTOCELL		
			C - 347V		CC - CUSTOM COLOUR			
			F - 277V**					
			O - 208V**					

* Standard configuration

** Voltage option offered for use with photocell only