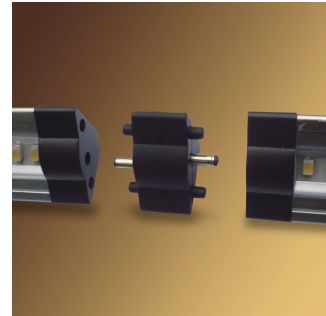
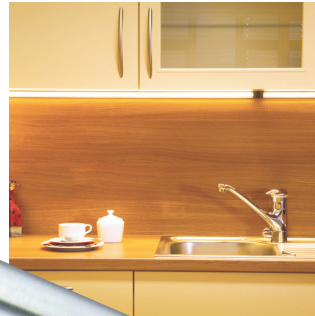




INSTALLS SNUGGLY
INTO CORNER.
EMITS LIGHT AT
A 45° ANGLE.



Direct Connector

UCT-LED



EACH UNIT INCLUDES:

- 1 - Fixture
- 1 - Direct Connector
- 1 - Cable Connector
- 2 - Mounting plates



AVAILABLE IN 3 LENGTHS:
300mm (11.81"), 500mm (19.69"), 1000mm (39.37")



NATURAL WHITE (4000K)
or
WARM WHITE (3000K)

DIMMABLE

* Power Supply and accessories sold separately (see back)

DESCRIPTION

Triangular model can be combined with the UC Ultra Slim Linear model and UCP Pucklight.

Link up to 3m (9.84ft) and/or 36 watts on one power source.

Available in Natural White (NW-4000K) or Warm White (WW-3000K)

LEDs have a greater than 50,000 hour life

Easy installation – Hardwire or plug-in power supply required. (see back)

Dimming option available when using a standard TRIAC dimmer and hardwire installation. If using a plug-in power supply, a separate dimmer controller is available.

Voltage 24DC

APPLICATION

Multiple uses include shelving, under cabinets, bookcases, walls and task lighting

Installation and ordering information on reverse.

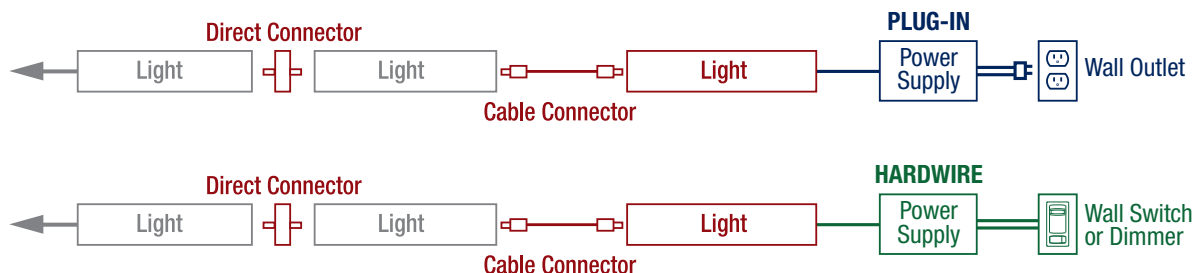
¹ Available separately.

LED

LED Undercabinet Light Triangular



INSTALLATION DIAGRAM

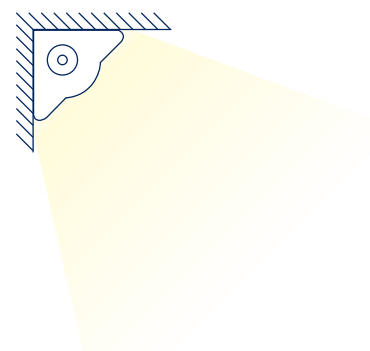


POWER SUPPLY REQUIREMENT

PRODUCT	# PIECES		WATTAGE		TOTAL WATTAGE
UCT-LED-300		x	3 Watts	=	
UCT-LED-500		x	5 Watts	=	
UCT-LED1000		x	11 Watts	=	

*** IMPORTANT ***
EACH SERIES RUN
MUST NOT EXCEED
36WATTS

LIGHT PATTERN



ORDERING INFO

PRODUCT	PROD#	DESCRIPTION	WATT	DIMENSIONS
Natural White Unit * 4000K	88898	UCT-LED300-NW	3W	L-300mm
	88899	UCT-LED500-NW	5W	L-500mm
	88900	UCT-LED1000-NW	11W	L-1000mm
Warm White Unit * 3000K	88901	UCT-LED300-WW	3W	L-300mm
	88902	UCT-LED500-WW	5W	L-500mm
	88903	UCT-LED1000-WW	11W	L-1000mm
Plug-in Power Supply	88864	UC-6W Power Supply	6W	L-45mm x W-25mm x D-31mm
	88865	UC-12W Power Supply	12W	L-68mm x W-25mm x D-50mm
	88866	UC-24W Power Supply	24W	L-96mm x W-30mm x D-45mm
	88867	UC-36W Power Supply	36W	L-96mm x W-30mm x D-45mm
Hardwire Power Supply	88860	UC-40W Hardwire Kit	40W	L-142.8mm x W-54.3mm x D-53.9mm
	88859	UC-H/W 100W ²	100W	
	88857	UC-H/W 150W ²	150W	
Dimmer (for plug-in power supply)	88872	UC-Dimmer Controller		L-85mm x W-25.4mm x D-12.7mm
On/Off Switch	88871	UC-Switch Connector		L-33mm x W-33mm x D-8mm
Output Receptacle (splitter)	88873	UC RCPT DC 4 (Allows you to split the low voltage power into 4 separate runs)		
	88874	UC RCPT DC 8 (Allows you to split the low voltage power into 8 separate runs)		

* EACH UNIT INCLUDES: (1) fixture, (1) direct connector, (1) cable connector, (2) mounting plates and (2) screws

² For use with multiple run applications. Output receptacle (splitter) is required to tie in runs to 100W or 150W transformer

Contact us for more information: info@rdalighting.com

RDA Lighting Inc. 222 Islington Ave., Toronto, ON M8V 3W7
TEL. 416-252-9454 / 800-268-0381 | FAX. 416-252-9664 / 800-668-5517

