

The AWL-LED-26W is a wall pack with an adjustable head that can be aimed straight down for dark sky requirements or aimed out to deliver the light where required.



APPLICATIONS

Ideal for use on outdoor walls along perimeters of buildings, townhouses, condominiums, schools.

| | |
|----------------|--|
| Project | |
| Type | |
| Date | |
| Notes | |

SPECIFICATIONS

Construction

Die cast aluminum housing with tamperproof stainless steel hardware. Clear tempered glass lens with a gasket. There are 4 conduit entries. The unit has a unique hanging hook assembly for easy installation and a leveling bubble on the back box for proper alignment.

LED configuration

The AWL-LED-26W has one LED Chip On Board (COB) that delivers 2 957 lumens. The LEDs have a color temperature of 5000K as standard. 3000K and 4000K also available. The LEDs have a CRI of greater than 70 and an operating temperature range of -40°C to +40°C.

Adjustable head

The fixture can be aimed 0° - 90° delivering more lumens on the ground where needed.

Electrical

Total system wattage of the unit is 27W. The standard unit has a high efficiency driver that operates at 120 - 277V. Optional 10KV surge suppressor available.

Finish

Standard finish is Bronze, White and Black. Please consult factory for custom color.

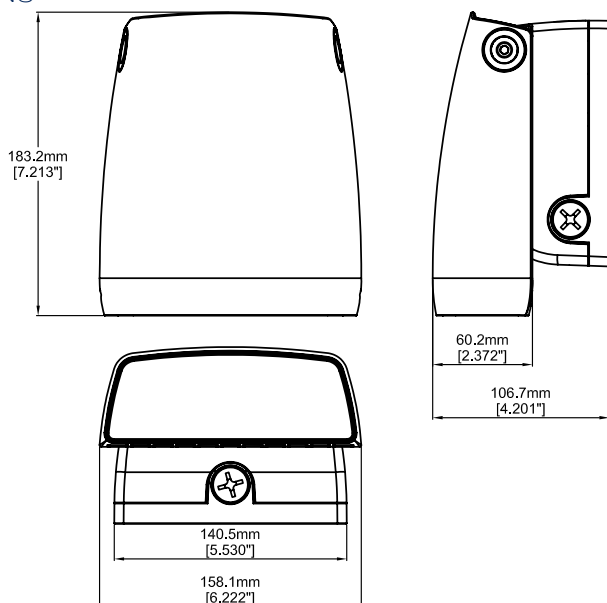
Accessories

Photocell, On/Off Sensor and 0 - 10V Dimmable Smart Sensor.

| | |
|----------------------|----------------------------|
| Equivalent to | up to 175W MH |
| Input Watts | 27W |
| Lumens | 2 957 lumens |
| Efficiency | 110 lumens per watt |

| | |
|------------------------------|---------------------------------------------------|
| Operating Temperature | -40°C to +40°C |
| Certification | cULus, DLC, IP65 meets LM79, LM80 |
| LED life | 100,000 hours |
| Color Temperature | 5000K (standard) 4000K, 3000K (Option) |
| Warranty | 5 Years |

DIMENSIONS



Shown with Optional Motion Sensor

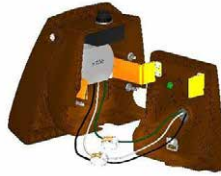


INSTALLATION INFORMATION

1. Open fixture, mount back box to junction box



2. Rest fixture onto hook and connect wires



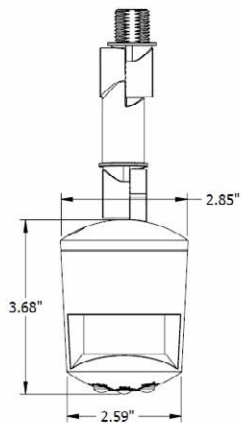
3. Reattach fixture to back box



ACCESSORIES

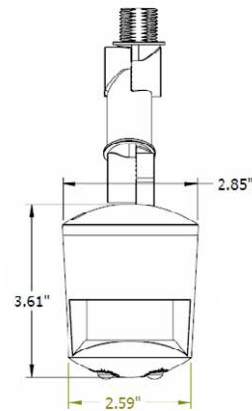
MS180DIM 0 - 10V Dimmable Smart Sensor (DMS)

MS180S On/Off Sensor (SMS)



Dimmable Smart Sensor

The MS180DIM is a fully adjustable, dimmable smart sensor that allows you to provide reduced light levels as low as 10% when no motion is detected.



On/Off Sensor

The MS180S is a fully adjustable motion sensor that can be set for dusk to dawn operation or other custom applications.

Features: Dimmable Smart Sensor

- Adjustable light levels ensure fixture is fully on when needed and dimmed or off when not.
- Smart dimming reduces electrical load and heat generated by the fixture resulting in increased fixture life.
- Over 92% energy savings compared to traditional wall packs.
- Sensor has an extension arm with two rotatable joints that allow mounting from the bottom conduit access or the side conduit access of fixture.
- Daylight sensor without smart dimming (MS180S) also available in the same design.

Contact us to learn more.

PHOTOMETRIC DATA

CATALOG NUMBER: AWL-LED26-A-5K-BRZ

FILENAME: AWL-LED26-A-5K-BRZ-PC.IES

IESNA:LM-63-1995

[TESTLAB] UL Verification Services (Guangzhou) Co., Ltd.

[TESTDATE] 2014-12-15

[ISSUEDATE] 2014-12-15

[LUMCAT] AWL-LED26-A-5K-BRZ

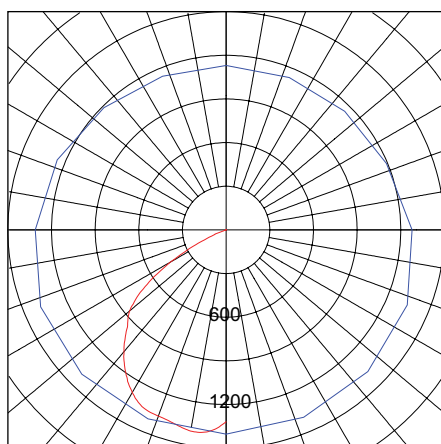
[LUMINAIRE] AWL SERIES

[LAMP] CAT] CLL030-1212A1

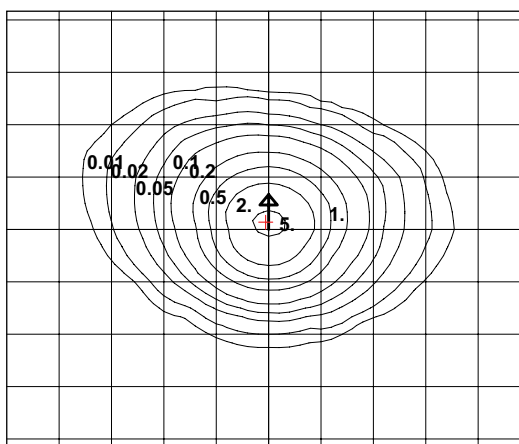
[LAMP]

SUMMARY DATA

| | |
|------------------------------|--------------------------|
| EFFICIENCY (Total): | - 303473.7 % |
| EFFICIENCY (Down / Up): | - 303319.4 % / - 154.2 % |
| EFFICIENCY (Street / House): | 0.0 % / 0.0 % |
| LUMENS/LAMP: | -1 |
| NO. OF LAMPS: | 1 |
| LUMINOUS OPENING: | RECTANGULAR |
| Width: | 0.03 (Meters) |
| Length: | 0.01 |
| Height: | 0.06 |
| INPUT WATTS: | 26.65 |

PLANE & CONE DIAGRAM


MAX CANDLEPOWER: 1404.463

ISO-ILLUMINANCE DIAGRAM


| Mounting Height | Multiplier |
|-----------------|------------|
| 10 | 2.250 |
| 15 | 1.000 |
| 20 | 0.563 |
| 25 | 0.360 |
| 30 | 0.250 |
| 35 | 0.184 |
| 40 | 0.141 |
| 45 | 0.111 |
| 50 | 0.090 |

+ = Point of max candela

Mounting Height = 15 Feet. Each box represents one mounting height.

ORDERING GUIDE

| | | | | | | | | |
|------------|---|----------------|---|-------------------|---|-------------------|---|------------------------|
| AWL | - | LED-26W | - | | - | | - | |
| | | VOLTAGE | | COLOR TEMP | | FINISH | | OPTIONS |
| | | A - 120V* | | 5K - 5000K* | | BRZ - BRONZE* | | DMS - Dimmable Sensor |
| | | F - 277V | | 4K - 4000K | | WHT - WHITE* | | SMS - On/Off Sensor |
| | | | | 3K - 3000K | | BLK - BLACK* | | PCA - 120V Photocell** |
| | | | | | | CC - CUSTOM COLOR | | PCF - 277V Photocell** |
| | | | | | | | | 10KV Surge Suppressor |

* Standard configuration

** Chosen photocell option must be the same as voltage