

This durable flat panel LED ceiling light is designed for a drop ceiling. The CPL features dimmable driver options and comes in a variety of sizes and color temperatures.



### APPLICATIONS

Ideal for offices, schools, public buildings, commercial spaces and hospitals.

Project	
Type	
Date	
Notes	

### SPECIFICATIONS

#### Construction

Housing is made from extruded aluminum. Fixture has an operating temperature range of -25°C to +55°C and is rated for damp location.

#### Electrical

Total system wattage of the unit is 35W. The standard unit has a high efficiency driver that operates at 120 - 277V.

#### LED Configuration

The 35W unit delivers 3,896 lumens. The LEDs have a color temperature of 4000K as standard with 3,500K and 5,000K color temperatures available as options.

#### Optics

Edge lit with no glare.

#### Dimming

0-10V dimming is standard

#### Mounting

The fixture can be drop ceiling or pendant mounted.

#### Options

- hi/lo occupancy sensor
- CCT tuning version available

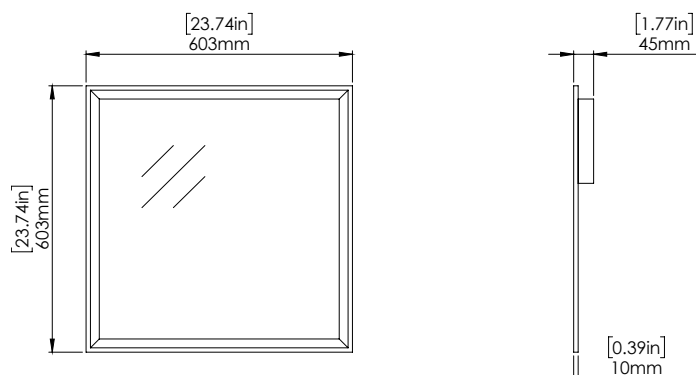
#### Finish

Aluminum frame with white powder coat paint finish.

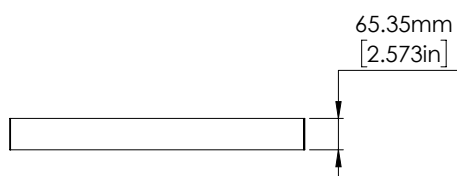
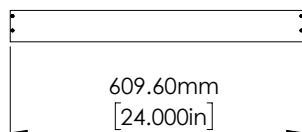
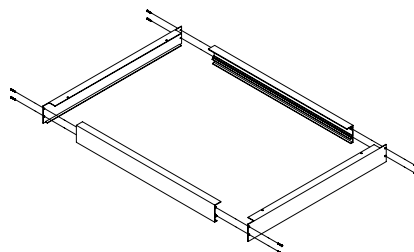
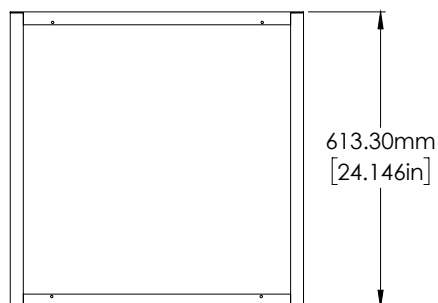
Fixture Watts	35W
Lumens	3,896
Efficacy	113 lumens/watt

Certification	cULus, DLC, rated for damp location
LED Life	100,000 hours
Colour Temperature	4000K(standard) 5000K (option) 3500K(option)
Warranty	5 Years
Operating temperature	-25°C to +55°C
Power Factor	0.92
CRI	>80
Total Harmonic Distortion	16.9%

### DIMENSIONAL DATA



SURFACE MOUNT KIT DIMENSIONS  
(ORDER SEPARATELY)



ORDERING GUIDE

<b>CPL22</b>	-	<b>LED32</b>	-		-		-	
		<b>VOLTAGE</b>		<b>COLOR TEMP</b>		<b>FINISH</b>		<b>OPTIONS</b>
		B - 120 - 277V*		5K - 5000K 4K - 4000K* 3.5K - 3500K VK- Variable Color		WHT - WHITE*		DIM - 0-10V DIMMING* SHFS - Standard On/Off high frequency motion sensor

\* Standard configuration