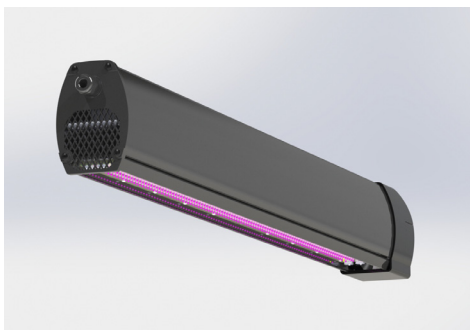


Violeta is an LED Grow light fixture with high efficiency LED's that help to promote growth and yield in a variety of plants.



APPLICATIONS

Ideal for applications such as greenhouses, and indoor grow operations.

Project	
Type	
Date	
Notes	

SPECIFICATIONS

Construction

Fixture has a custom designed anodized aluminum cooling channel. Rated for wet locations. Fixture has a protective polycarbonate lens. Integrated cooling fan accessories are available for HVAC hookup with negative pressure cooling systems.

Mounting

Fixture has been designed for suspended or chain mounting.

LED Configuration

Mix of Blue, red, far red wave lengths to benefit flowering. Fixture has highly uniform LED array.

Electrical

Available as 375 watts or 500 watts. Fixture has a high efficiency driver that operates at 120 - 277V. 347V-480V also available as an option.

Options

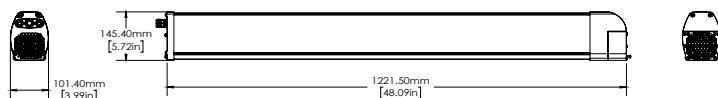
- Accessories available for HVAC hookup.
- 347-480V
- Optional dimmable LED drivers

Finish

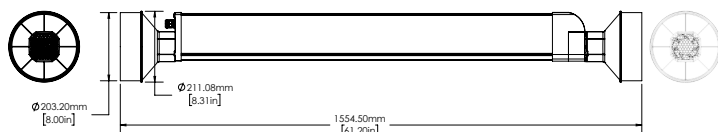
Black finish is standard..

Watts	375W or 500W
Voltage	120-277V (standard) 347V-480V (option)
Warranty	5 Years
Power Factor	0.999
PPFD in PAR region ($\mu\text{mol}/\text{m}^2$) (400-700 nm)	up to 1627.19
Total PPFD ($\mu\text{mol}/\text{m}^2$) (200-800 nm)	up to 2131.858

DIMENSIONS

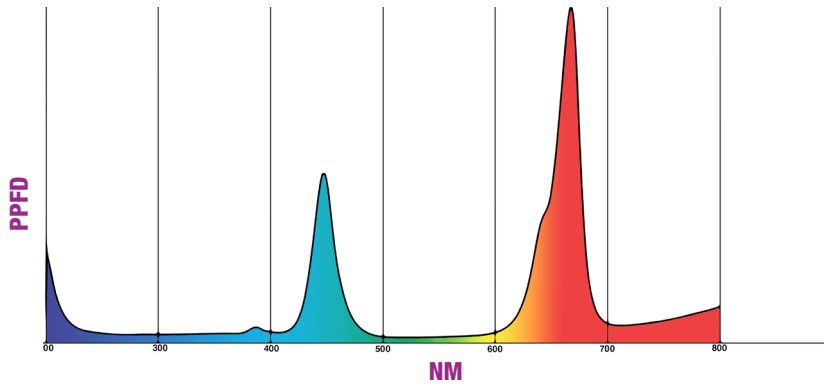


FAN COOLED



HVAC HOOK UP

PHOTOSYNTHETIC PHOTON FLUX DENSITY CHART



PAR- Photo synthetically Active Radiation (PAR): all radiation with a wavelength of 400 nm-700nm that is used for photosynthesis.

PPFD- Photosynthetic Photon Flux Density (PPFD): a measurement of PAR; the number of photons falling on a given area in a given amount of time, typically measured in microcoles per square meter per second.

ORDERING GUIDE

VIOLETA						
WATTAGE	VOLTAGE	POWER CORD	DIMMING	UV-B	OPTIONS	
375 500	B - 120-277V* J - 347-480V	6 - 6 FOOT CORD 10 - 10 FOOT CORD	0-10 (STD) DALI	0 - No UV 1 - UV	F - FAN H - 8" HVAC	

* Standard configuration