



## APPLICATIONS

**Ideal for building façades, sign lighting and wall washing in both commercial and industrial applications.**

## RFL1-LED20 LED Floodlight

The RFL1-LED20 is a sleek, ruggedly designed, high efficiency floodlight. This LED flood has multiple mounting options and accessories to suit a wide range of applications.

<b>Project</b>	
<b>Type</b>	
<b>Date</b>	
<b>Notes</b>	

## SPECIFICATIONS

### Construction

Precision die cast aluminum housing with clear tempered glass lens. Superior heat sink design with air-flow fins on the top and bottom to maximize fixture life.

### LED configuration

Each unit has one high efficiency Chip on Board (COB) that delivers 2367 lumens. The LEDs have a colour temperature of 5000K as standard. 4000K, 3000K also available. The CRI is greater than 70 and the operating temperature range is -40°C to +40°C.

### Beam Distribution

NEMA 6H X 6V (wide) is standard. NEMA 3H X 3V (narrow) is available as an option.

### Electrical

Total system wattage of the unit is 20W. The standard unit has a high efficiency driver that operates at 120 - 277V. 347V also available as an option.

### Mounting

Standard unit is available with two mounting options:  
- Knuckle mount - 1/2" NPT knuckle & round cover for 4" octagon box.  
- Yoke mount - 3.64" deep yoke with watertight connector.

### Finish

Standard finish is Bronze. Please consult factory for custom colour.

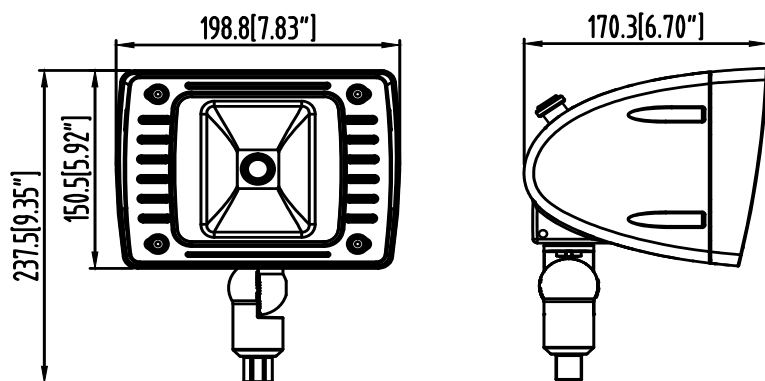
### Accessories

Visor, Polycarbonate lens, Wire Guard, Photocell, Phillips Dynadimmer.  
Phillips Dynadimmer dims the fixture to 25% for 6 hours instead of operating at 100% at all times.

<b>Equivalent to</b>	<b>up to 150W MH</b>
<b>Input Watts</b>	<b>20W</b>
<b>Lumens</b>	<b>2,367</b>
<b>Efficiency</b>	<b>118 lumens per watt</b>

<b>Operating Temperature</b>	<b>-40°C - +40°C</b>
<b>Certification</b>	<b>cULus, DLC, IP65 meets LM79, LM80</b>
<b>Warranty</b>	<b>5 Years</b>
<b>Colour Temperature</b>	<b>5000K (standard) 4000K (option) 3000K (option)</b>
<b>LED life</b>	<b>100,000 hours</b>
<b>Effective Projected Area (EPA Rating)</b>	<b>0.35 sq ft</b>
<b>Total Harmonic Distortion</b>	<b>10%</b>
<b>Power Factor</b>	<b>0.982</b>

## DIMENSIONS



**With Optional Narrow Beam (3X3)**

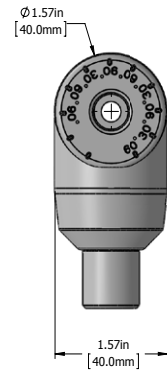
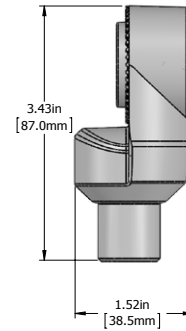
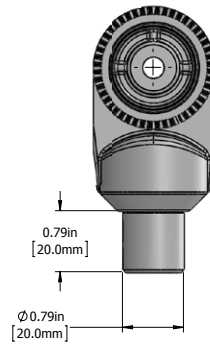


## MOUNTING OPTIONS

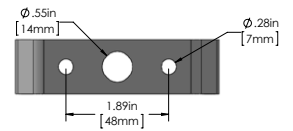
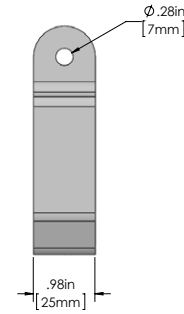
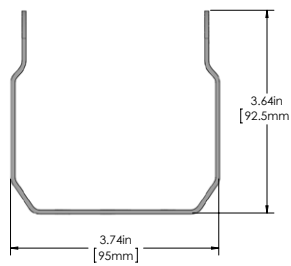
### Knuckle, Yoke mount



**Knuckle**

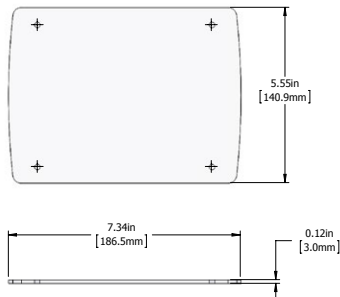


**Yoke**

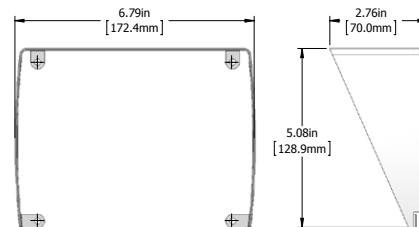
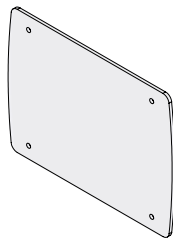


## ACCESSORIES

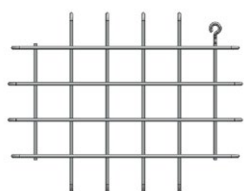
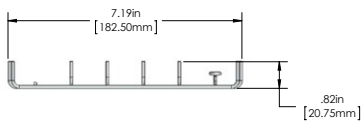
### Polycarbonate lens, Wire guard, Visor



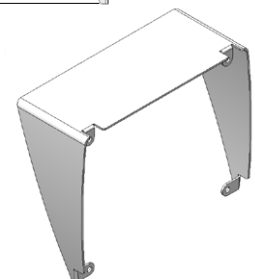
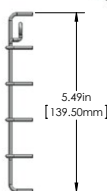
**Polycarbonate lens**



**Visor**

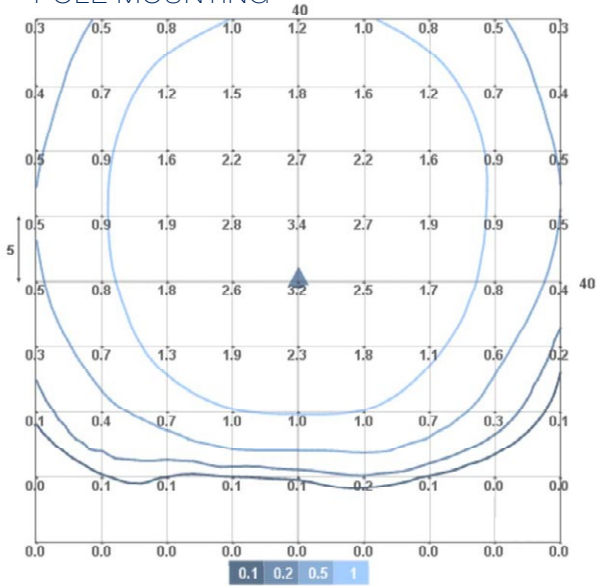


**Wire Guard**



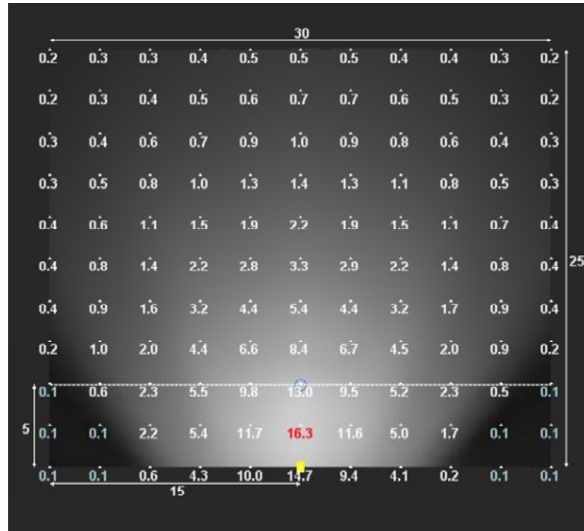
## PHOTOMETRIC DATA

### POLE MOUNTING



Mounting Height 20 ft  
Tilt 12°

### WALL WASHING GROUND LEVEL MOUNTING



#### Spacing Results

Spacing 30 ft  
Quantity 1  
Tilt 120°

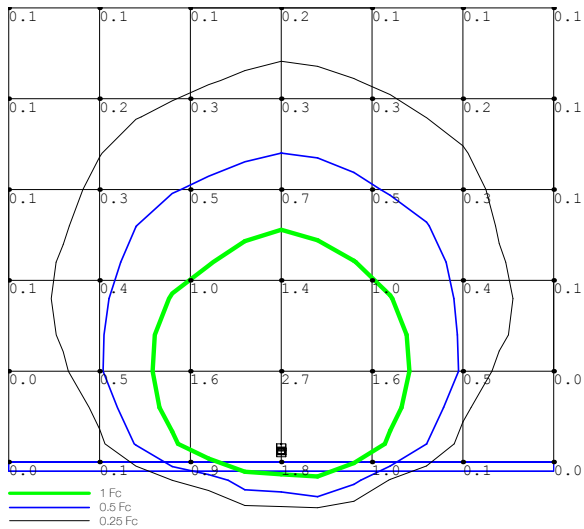
#### Calculation Results

Minimum 0.1 fc  
Average 2.2 fc  
Maximum 16.3 fc  
Ave/Min 36.8  
Max/Min 272.2  
Point Spacing 3X2.5 ft

#### Design Summary

Wall Width 30 ft  
Wall Height 25 ft  
Setback from wall 8.5 ft

### WALL MOUNTING



Mounting Height 20 ft  
Tilt 45°  
10X10 ft grid

## ORDERING GUIDE

RFL1	LED20						
		VOLTAGE	COLOUR TEMP	BEAM	FINISH	MOUNTING	OPTIONS
		B - 120 - 277V*	5K - 5000K*	W - Wide (6X6)*	BRZ - BRONZE*	YK - Yoke*	V - Visor
		A - 120V	4K - 4000K	N - Narrow (3X3)	CC - CUSTOM COLOUR	KN - Knuckle*	WG - Wire Guard
		F - 277V	3K - 3000K				PCL - Polycarbonate Lens
		C - 347V					PCA - 120V Photocell**
							PCF - 277V Photocell**
							PCC - 347V Photocell**

\* Standard configuration

\*\* Chosen photocell option must be the same as voltage