



SLOT LED STEP LIGHT

The Slot step light is great for general low light levels with low glare. Ideal for theatres and auditoriums. With the aluminum face-plate pattern this unit can take abuse and continue to provide great performance.

HOUSING Metal housing with two knock out power entries 7/8" KO. Housing has a white polyester powder coat finish and can be used for concrete pours.

DIFFUSER Polycarbonate available in white or clear.

FASTENERS Captive and recessed stainless steel.

LEDS Available in 1.2 watt with an integral driver. LEDS are available in White, Blue, Red and Green. They are also available with a narrow, medium or wide beam lens. Drivers are line voltage in at 120 volts. LED's have a life of 60,000 hours.

DRIVER All drivers are integral 120 volts power in.

FACE PLATE Face plate is made of aluminum with a polyester powder coat finish.



FINISH All units have a polyester powder coat finish. Standard colours are Sparkle Silver, Charcoal, Black and White. For custom colours please consult factory.

MOUNTING For concrete pour only. For indoor and outdoor use.



www.rabdesign.ca

Catalog Code

SLOT

1W - WHITE 1R - RED
1B - BLUE 1G - GREEN 1A - AMBER

LAMP

NARROW, MEDIUM, WIDE

BEAM FOR LEDS ONLY

120V

VOLTAGE

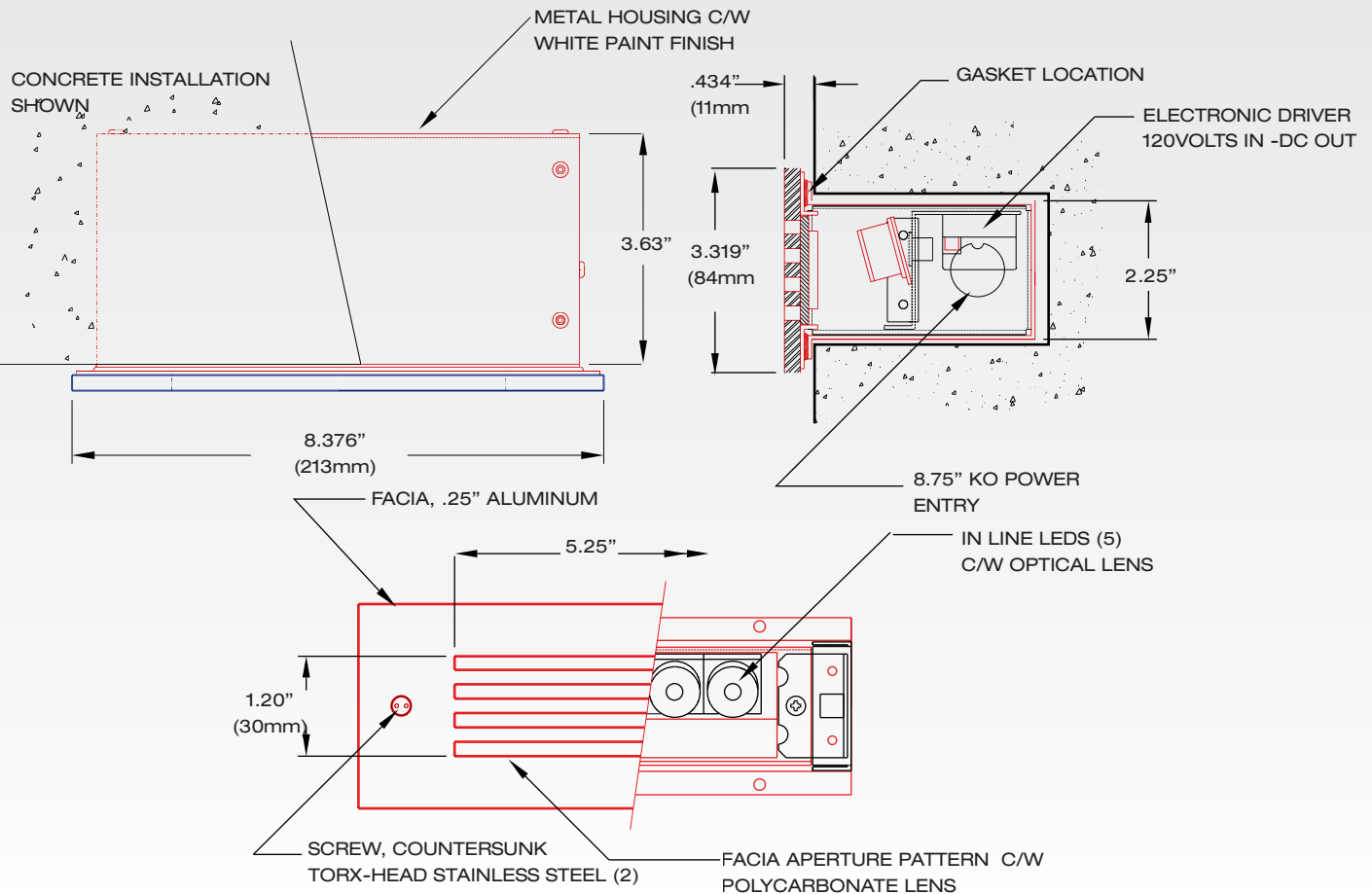
SPS - SPARKLE SILVER
BLK - BLACK
WH - WHITE
CHA - CHARCOAL
CC - CUSTOM COLOUR

FINISH

RAB
DESIGN



Dimensions



www.rabdesign.ca