



LIGHTING SCIENCES CANADA LTD.

160 Frobisher Drive, Unit 5, Waterloo, Ontario, Canada N2V 2B1
Tel: (519) 746-3140 Fax: (519) 746-3156 lsc@lightingsciences.ca

CERTIFIED TEST REPORT NO. LSC E754

RAB DESIGN POST TOP LUMINAIRE CAT. NO. TL-175MH-120-GR3-BRONZE
WITH TYPE III REFRACTOR, SPECULAR UPPER REFLECTOR, AND CLEAR OUTER LENS
ONE 175W CLEAR ED17 METAL HALIDE LAMP. LUMEN RATING = 14000 LMS.

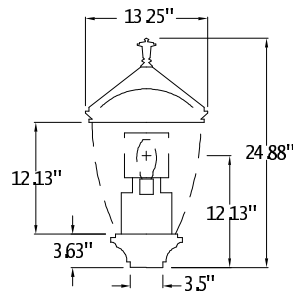
IESNA CUTOFF CLASSIFICATION: NON-CUTOFF

REPORT PREPARED FOR:

RAB DESIGN LIGHTING INC.
TORONTO, ONTARIO

CERTIFIED BY:

Charles Lison



DATE: JAN 27, 2011

LABORATORY RESULTS MAY NOT BE REPRESENTATIVE OF FIELD PERFORMANCE.
BALLAST FACTORS HAVE NOT BEEN APPLIED.

TESTED IN 30 PLANES LEFT SIDE, 30 PLANES RIGHT SIDE, LEFT AND RIGHT AVERAGED

VERTICAL TEST INCREMENTS ARE 2.5 DEGREES.

TEST DISTANCE EXCEEDS FIVE TIMES THE GREATEST
LUMINOUS OPENING OF LUMINAIRE.

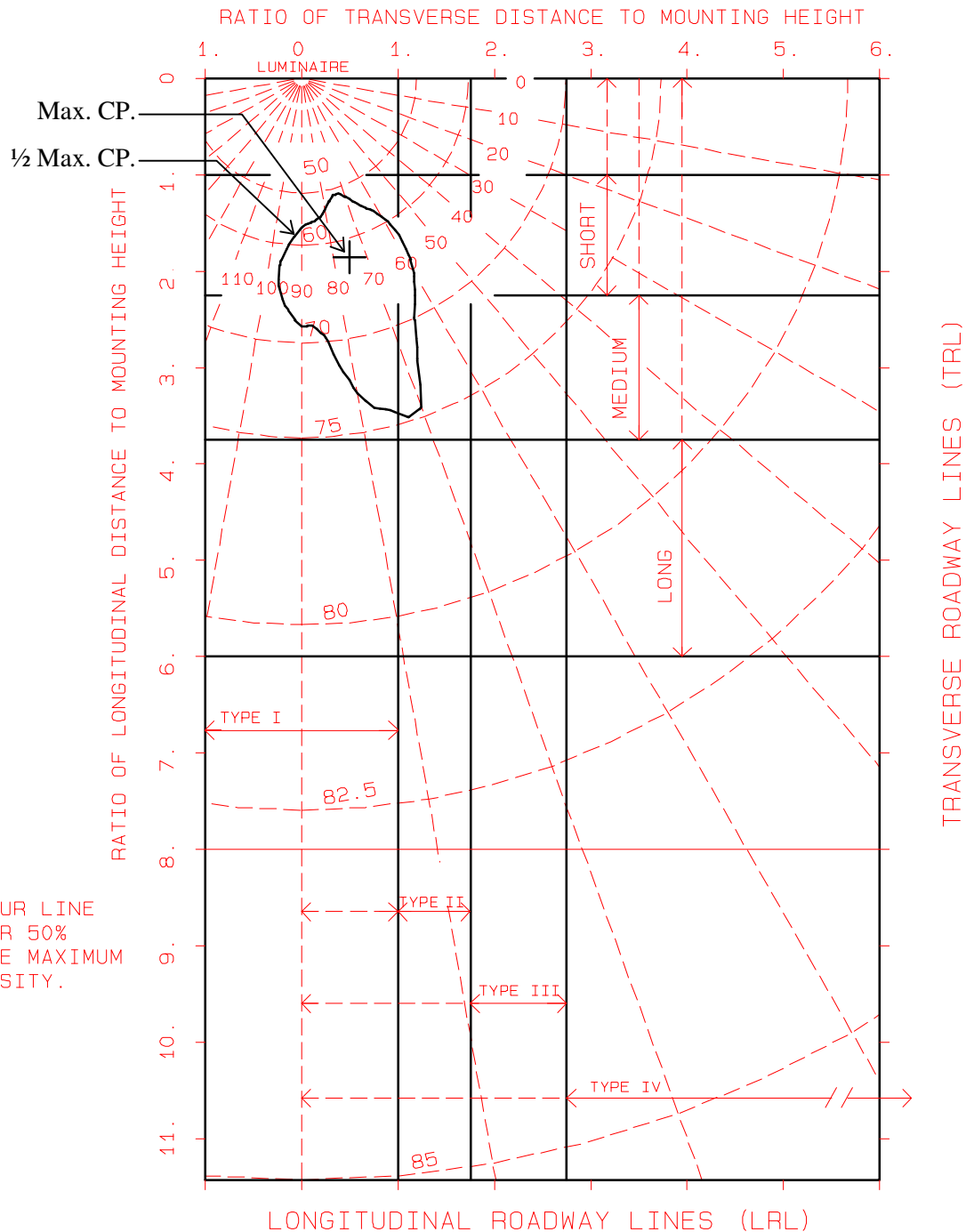
TESTED IN ACCORDANCE WITH IES RECOMMENDED PROCEDURES

LIGHTING SCIENCES CANADA LTD.

160 FROBISHER DRIVE, UNIT 5
WATERLOO, ONTARIO

TEST REPORT NO. E754

RAB DESIGN POST TOP LUMINAIRE CAT. NO. TL-175MH-120-GR3-BRONZE
WITH TYPE III REFRACTOR, SPECULAR UPPER REFLECTOR, AND CLEAR OUTER LENS
ONE 175W CLEAR ED17 METAL HALIDE LAMP. LUMEN RATING = 14000 LMS.



IES CLASSIFICATION: TYPE II, SHORT

LIGHTING SCIENCES CANADA LTD.
160 FROBISHER DRIVE, UNIT 5
WATERLOO, ONTARIO

CERTIFIED TEST REPORT NO. LSC E754

RAB DESIGN POST TOP LUMINAIRE CAT. NO. TL-175MH-120-GR3-BRONZE
WITH TYPE III REFRACTOR, SPECULAR UPPER REFLECTOR, AND CLEAR OUTER LENS
ONE 175W CLEAR ED17 METAL HALIDE LAMP. LUMEN RATING = 14000 LMS.

UTILIZATION TABLE

CO-EFFICIENT OF UTILIZATION

RATIO	HOUSE SIDE	STREET SIDE	TOTAL
.5	.054	.079	.133
1.0	.086	.126	.212
1.5	.111	.155	.266
2.0	.130	.176	.305
2.5	.142	.188	.329
3.0	.148	.194	.342
3.5	.154	.200	.354
4.0	.157	.204	.360
5.0	.162	.209	.371
TOTAL:	.184	.232	.416

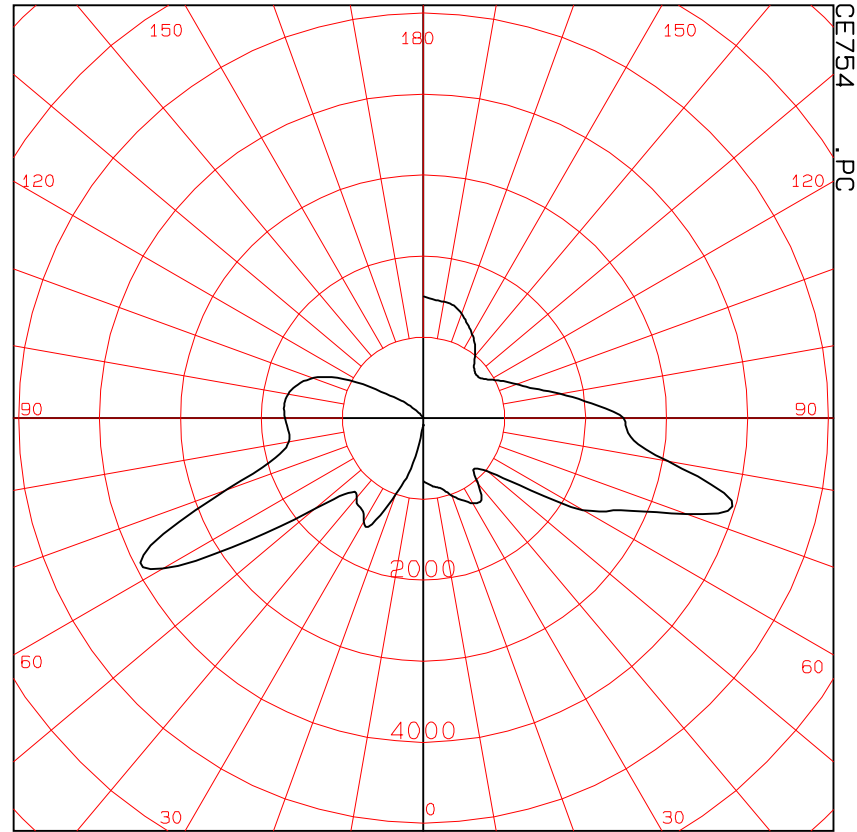
PERCENTAGE OUTPUTS

DOWNWARD:	STREET SIDE	=	23.2%
	HOUSE SIDE	=	18.4%
	TOTAL	=	41.6%
UPWARD:	STREET SIDE	=	9.8%
	HOUSE SIDE	=	8.0%
	TOTAL	=	17.8%
TOTAL EFFICIENCY		=	59.4%

CERTIFIED TEST REPORT NO. LSC E754

CANDLEPOWER
IN MAX. PLANE

ANGLE	CANDLEPOWER
.0	82
5.0	114
10.0	314
15.0	712
20.0	998
25.0	1389
30.0	1468
35.0	1352
40.0	1282
45.0	1308
50.0	1721
52.5	2122
55.0	2624
57.5	3206
60.0	3716
62.5	3936
65.0	3711
67.5	3157
70.0	2575
72.5	2143
75.0	1894
77.5	1756
80.0	1687
82.5	1669
85.0	1678
87.5	1695
90.0	1710
95.0	1729
105.0	1604
115.0	1175
125.0	451
135.0	130
145.0	11
155.0	11
165.0	1
175.0	0
180.0	0



MAXIMUM CANDLEPOWER: 3936

PLANE OF MAXIMUM: 75.0
VERTICAL ANGLE OF MAXIMUM: 62.5

CANDLEPOWER
IN MAX. CONE

ANGLE	CANDLEPOWER
.0	781
5.0	828
15.0	912
25.0	1119
35.0	1238
45.0	885
55.0	1450
60.0	2267
62.5	2493
65.0	2687
67.5	3023
70.0	3458
72.5	3883
75.0	3936
77.5	3549
80.0	3058
82.5	2718
85.0	2564
87.5	2501
90.0	2469
95.0	2078
105.0	1414
115.0	1083
125.0	861
135.0	884
145.0	1109
155.0	1285
165.0	1438
175.0	1468
180.0	1500

CERTIFIED TEST REPORT NO. LSC E754

RAB DESIGN POST TOP LUMINAIRE CAT. NO. TL-175MH-120-GR3-BRONZE
WITH TYPE III REFRACTOR, SPECULAR UPPER REFLECTOR, AND CLEAR OUTER LENS
ONE 175W CLEAR ED17 METAL HALIDE LAMP. LUMEN RATING = 14000 LMS.

CANDLEPOWER SUMMARY

VERT. ANGLE	HORIZONTAL ANGLES - STREET SIDE									
	.0	5.0	15.0	25.0	35.0	45.0	55.0	65.0	75.0	85.0

.0	82	82	82	82	82	82	82	82	82	82
5.0	111	116	118	119	117	111	109	110	114	114
10.0	207	217	209	206	209	216	242	280	314	341
15.0	392	388	373	412	469	519	594	660	712	713
20.0	475	479	461	521	597	689	821	938	998	981
25.0	505	522	523	551	627	761	1010	1281	1389	1261
30.0	517	529	513	532	589	722	1024	1388	1468	1240
35.0	490	499	479	474	511	599	875	1246	1352	1193
40.0	470	477	461	437	474	539	748	1184	1282	1099
45.0	431	448	433	411	462	470	644	1097	1308	1084
50.0	472	494	499	511	570	497	733	1303	1721	1304
55.0	591	630	660	729	813	628	1002	1866	2624	1811
60.0	734	788	855	1020	1130	808	1384	2557	3716	2447
62.5**	781	828	912	1119	1238	885	1450	2687	3936	2564
65.0	770	810	904	1112	1244	905	1377	2573	3711	2464
70.0	652	683	769	935	1022	756	1087	1981	2575	1911
75.0	572	604	674	780	819	606	925	1573	1894	1554
80.0	560	591	654	733	746	544	884	1428	1687	1424
85.0	577	605	669	735	739	536	897	1410	1678	1414
90.0	593	618	681	737	733	530	908	1403	1710	1424

HORIZONTAL ANGLES - HOUSE SIDE											
	90.0	95.0	105.0	115.0	125.0	135.0	145.0	155.0	165.0	175.0	180.0
.0	82	82	82	82	82	82	82	82	82	82	82
5.0	113	114	117	114	106	96	90	86	87	88	84
10.0	350	351	333	293	263	247	249	266	285	289	295
15.0	691	659	584	532	492	456	441	449	467	484	488
20.0	935	885	765	661	577	546	569	601	621	642	642
25.0	1158	1069	875	706	614	584	596	647	684	709	704
30.0	1110	1004	766	610	539	521	542	586	640	677	681
35.0	1061	931	710	544	484	490	526	570	645	689	693
40.0	934	798	604	430	435	439	454	481	563	602	609
45.0	931	794	618	441	457	437	489	509	601	629	642
50.0	1162	975	748	557	533	509	625	681	796	825	849
55.0	1673	1376	1006	761	649	651	833	946	1091	1131	1180
60.0	2331	1925	1331	1030	814	838	1070	1250	1418	1457	1505
62.5**	2469	2078	1414	1083	861	884	1109	1285	1438	1468	1500
65.0	2382	2069	1389	1048	841	877	1062	1212	1353	1359	1379
70.0	1824	1690	1149	867	668	727	858	958	1074	1066	1083
75.0	1468	1383	948	743	554	568	705	814	910	912	937
80.0	1356	1287	887	710	533	529	668	782	872	881	901
85.0	1354	1291	885	718	535	524	672	792	880	892	905
90.0	1363	1289	888	718	536	518	671	794	882	892	901

** DENOTES VERTICAL ANGLE OF MAXIMUM CONE

**** DENOTES LATERAL ANGLE OF MAXIMUM PLANE

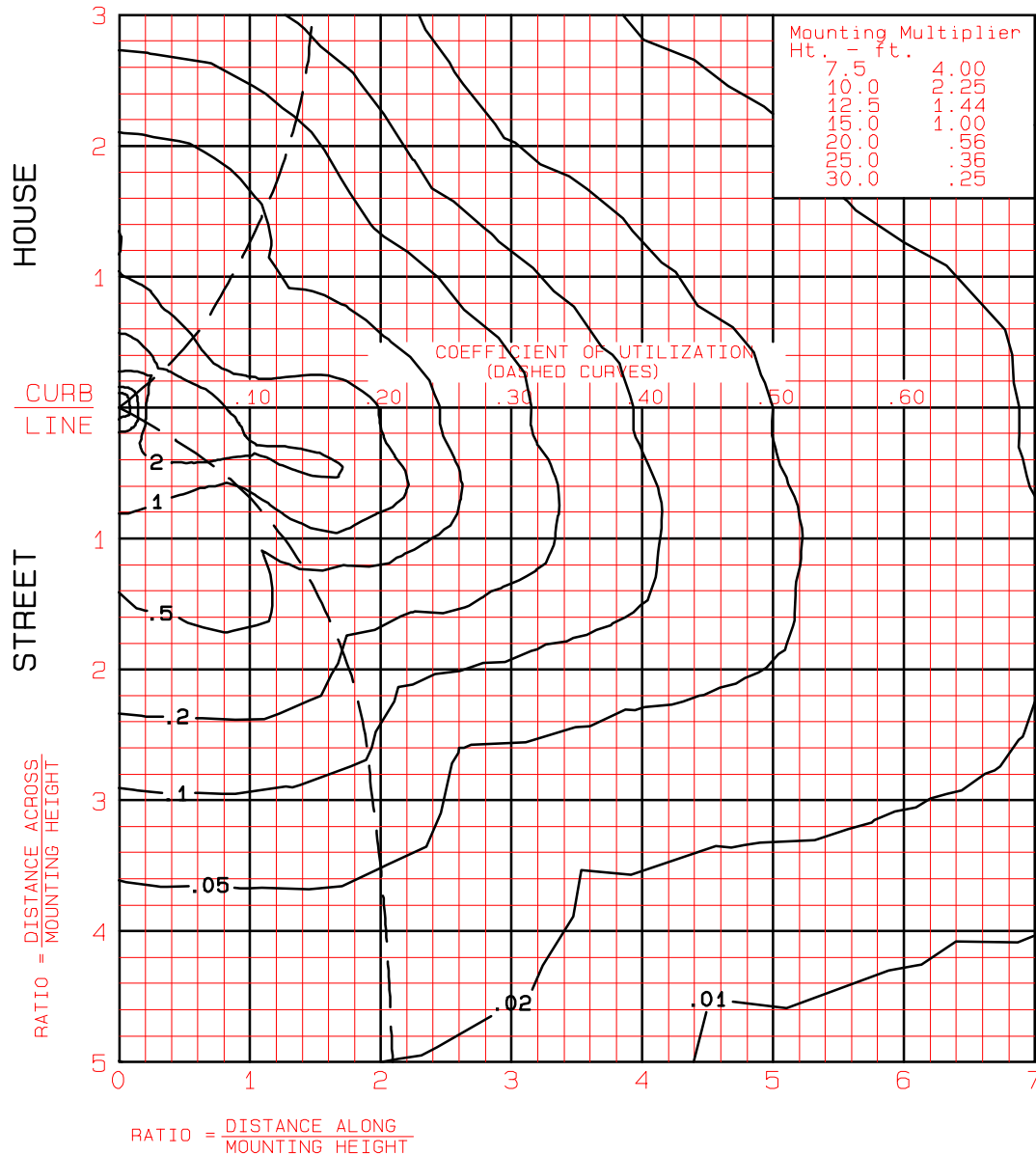
CANDLEPOWER WAS MEASURED IN 2.5 DEGREE STEPS - TABULATIONS ARE AVAILABLE

ISOFOOTCANDLE

TEST REPORT NO. E754

RAB DESIGN POST TOP LUMINAIRE CAT. NO. TL-175MH-120-GR3-BRONZE
WITH TYPE III REFRACTOR, SPECULAR UPPER REFLECTOR, AND CLEAR OUTER LENS
ONE 175W CLEAR ED17 METAL HALIDE LAMP. LUMEN RATING = 14000 LMS.

MOUNTING HEIGHT FOR ISOFC 15.0 FEET



CERTIFIED TEST REPORT NO. LSC E754

** FOOTCANDLE TABLE FOR SINGLE LUMINAIRE AT 15.0 FT. **															
LATERAL															
RATIOS															
-3.00	+	+	+	+	+	+	+	+	+	+	+	+	+	+	+
	.14	.13	.11	.086	.062	.043	.029	.023	.018	.015	.013	.011	.010	.008	.007
-2.50	+	+	+	+	+	+	+	+	+	+	+	+	+	+	+
	.26	.24	.19	.13	.084	.053	.038	.028	.023	.020	.017	.014	.012	.010	.008
-2.00	+	+	+	+	+	+	+	+	+	+	+	+	+	+	+
	.57	.51	.34	.20	.11	.072	.050	.040	.032	.026	.021	.017	.014	.012	.010
-1.50	+	+	+	+	+	+	+	+	+	+	+	+	+	+	+
	.97	.83	.56	.30	.16	.10	.077	.057	.043	.033	.026	.020	.017	.014	.012
-1.00	+	+	+	+	+	+	+	+	+	+	+	+	+	+	+
	1.0	.79	.55	.43	.29	.18	.11	.078	.056	.043	.033	.026	.021	.017	.014
-.50	+	+	+	+	+	+	+	+	+	+	+	+	+	+	+
	2.2	1.1	.66	.74	.54	.31	.18	.11	.078	.056	.042	.032	.025	.020	.016
HOUSE															
	CURB LINE														
-----	+	+	+	+	+	+	+	+	+	+	+	+	+	+	+
STREET	.36	3.7	1.4	1.4	.96	.46	.23	.14	.091	.063	.046	.035	.027	.021	.017
.50	+	+	+	+	+	+	+	+	+	+	+	+	+	+	+
	1.6	1.4	1.4	2.0	1.3	.57	.28	.15	.10	.068	.049	.036	.028	.022	.017
1.00	+	+	+	+	+	+	+	+	+	+	+	+	+	+	+
	.67	.62	.53	.81	.70	.43	.26	.16	.10	.073	.053	.039	.030	.024	.019
1.50	+	+	+	+	+	+	+	+	+	+	+	+	+	+	+
	.47	.54	.58	.31	.25	.21	.16	.12	.096	.071	.052	.039	.030	.024	.019
2.00	+	+	+	+	+	+	+	+	+	+	+	+	+	+	+
	.30	.33	.33	.24	.12	.10	.087	.076	.063	.054	.045	.038	.030	.024	.019
2.50	+	+	+	+	+	+	+	+	+	+	+	+	+	+	+
	.15	.16	.16	.14	.096	.056	.052	.046	.041	.037	.032	.028	.025	.022	.019
3.00	+	+	+	+	+	+	+	+	+	+	+	+	+	+	+
	.087	.092	.092	.086	.071	.048	.031	.030	.028	.025	.023	.021	.019	.017	.015
3.50	+	+	+	+	+	+	+	+	+	+	+	+	+	+	+
	.054	.057	.057	.055	.048	.040	.028	.019	.019	.018	.017	.016	.014	.013	.012
4.00	+	+	+	+	+	+	+	+	+	+	+	+	+	+	+
	.036	.038	.038	.038	.035	.030	.024	.018	.013	.013	.012	.012	.011	.010	.009
4.50	+	+	+	+	+	+	+	+	+	+	+	+	+	+	+
	.025	.027	.027	.027	.026	.023	.020	.016	.012	.009	.009	.009	.008	.008	.007
5.00	+	+	+	+	+	+	+	+	+	+	+	+	+	+	+
	.019	.020	.020	.020	.019	.018	.016	.014	.011	.009	.007	.007	.007	.006	.006
	0.0	0.5	1.0	1.5	2.0	2.5	3.0	3.5	4.0	4.5	5.0	5.5	6.0	6.5	7.0
	LONGITUDINAL MOUNTING HEIGHT RATIOS														

CORRECTION FACTORS FOR OTHER MOUNTING HEIGHTS: SEE ISOFOOTCANDLE PAGE